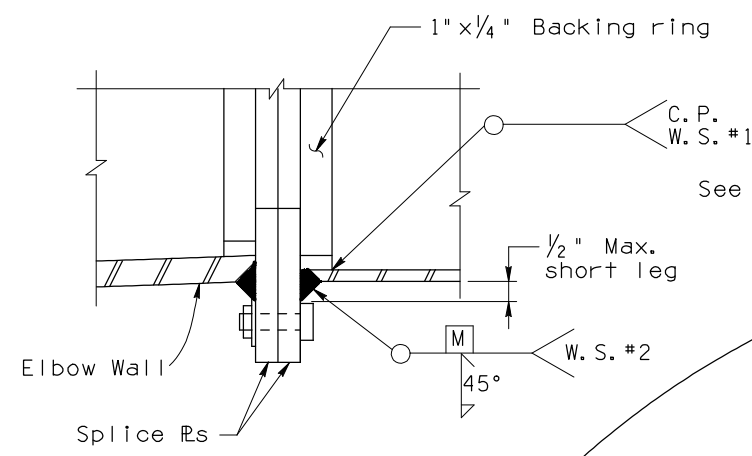
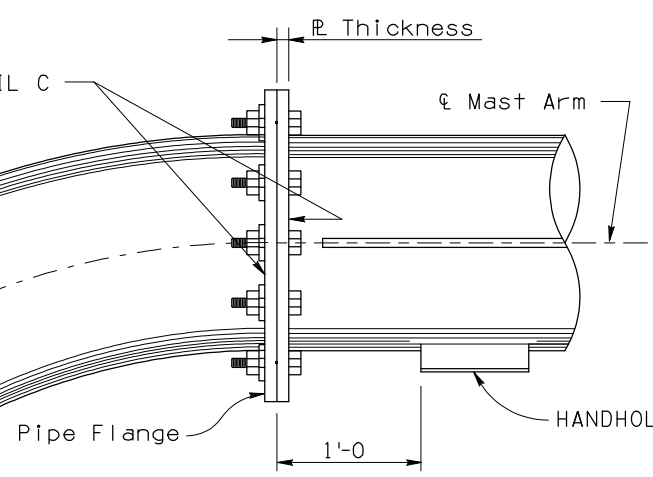


F.H.W.A. REGION	STATE	PROJECT NO.	SHEET NO.	TOTAL SHEETS	AS BUILT
9	ARIZ.				



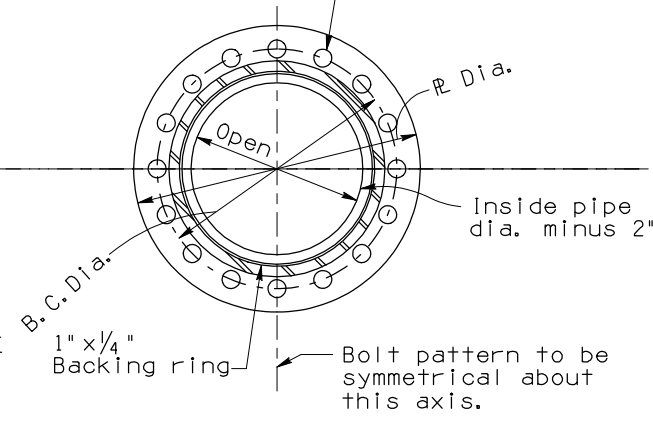
**WELD DETAIL C**

NOTE: Weld details for mast arm are typical for elbow.

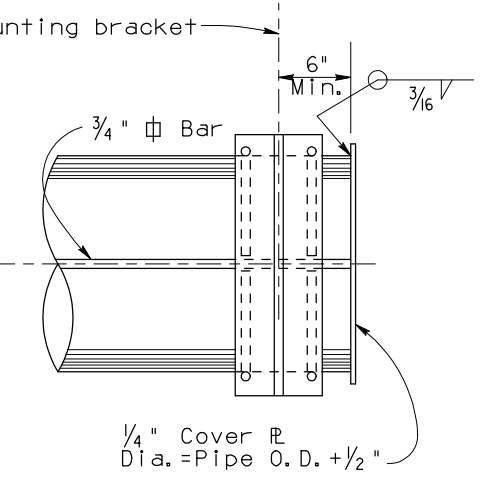


**FIELD SPLICE**

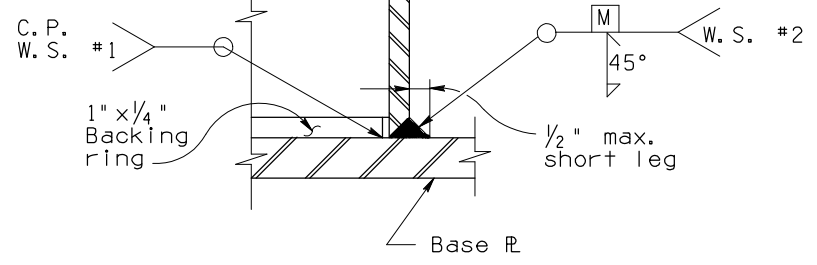
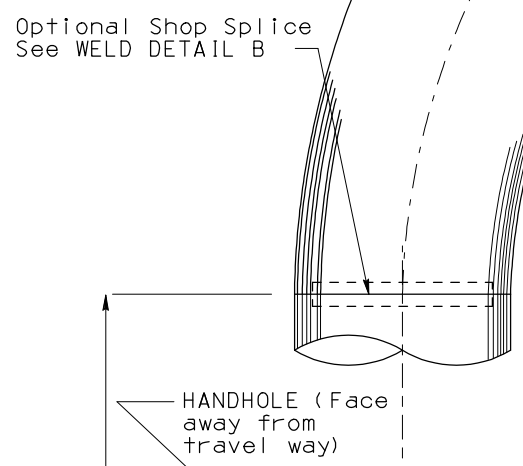
3/4"  $\phi$  ATSM A-325N bolts equally spaced. Torque to tension of 28K. Bolt hole dia. 13/16". See table for other details. All A325 bolts shall be installed in accordance with Subsection 604-2.03(c) of the Standard Specifications.



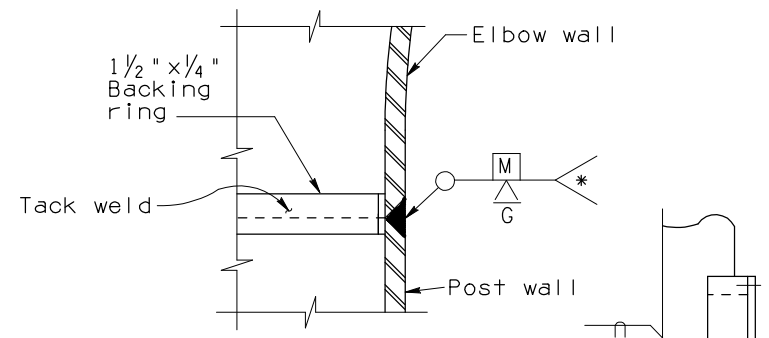
**SECTION B-B**



**MAST ARM END DETAIL**

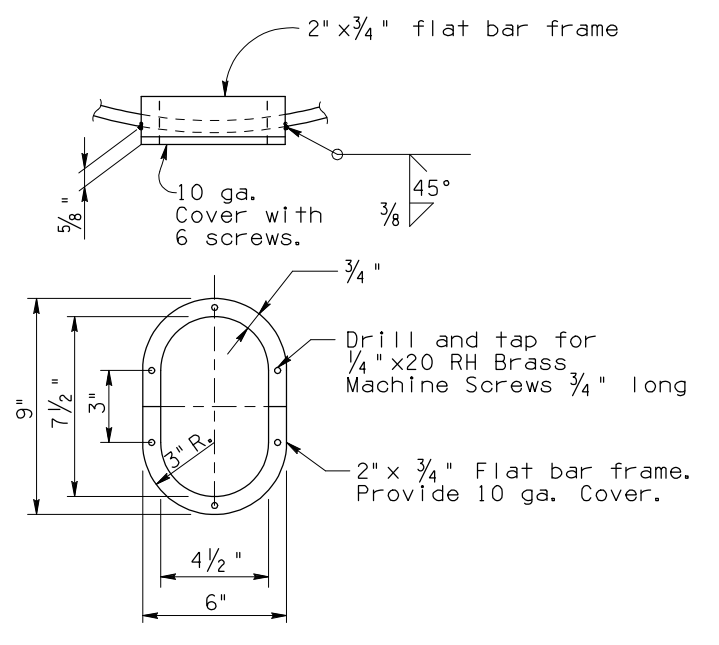


**WELD DETAIL A**

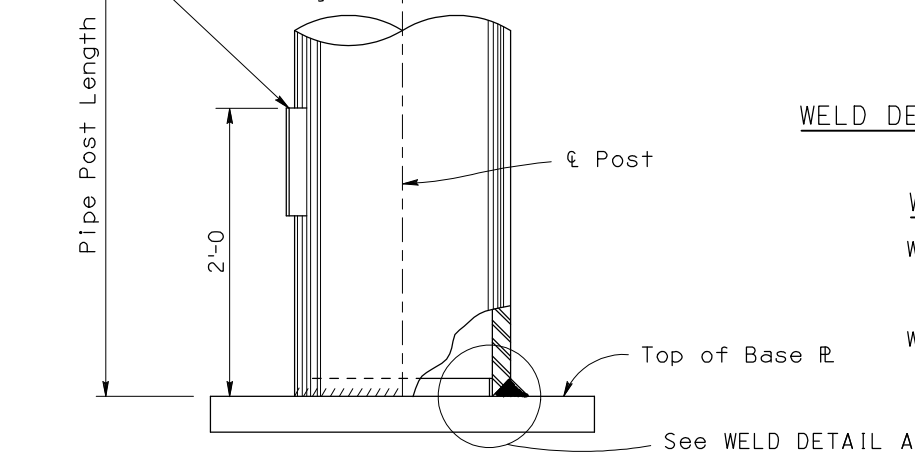


**WELD DETAIL B**

\* Preheat per AWS requirements



**HANDHOLE & COVER DETAILS**



**POST BASE ELEVATION**

**WELD SEQUENCE NOTES:**

- W.S. #1 The Backing Ring shall be attached to the Base Plate with a full penetration weld.
- W.S. #2 Attach the post wall to the Base Plate Assembly with a full penetration weld. Preheat per AWS requirements.

Field Splice					
Type	Pipe Dia.	R Dia.	R Thickness	No. of bolts	B. C. Dia.
1C	16"	21"	1/4"	22	18 1/2"
2C	18"	23"	3/8"	26	20 1/2"
3C	20"	25"	1/2"	29	22 1/2"
4C	22"	27"	1/2"	31	24 1/2"

5/16" Dia. N.C. Tapped hole for attachment of grounding conductor

Note to Designer: The information presented in this Standard Detail has been prepared in accordance with recognized engineering principles and is for general use. It should not be used for specific application without competent professional examination and verification of its suitability and applicability by a licensed professional engineer. Contents within the inner border line shall not be altered.

NO.	DESCRIPTION OF REVISIONS	DATE	MADE BY	U.A.P.
1	Original Issue	6-01		
2				
3				
4				

NOTE: For Base R Details see Dwg. 2 of 5

DESIGN APPROVED <i>James R. Pyne</i>	ARIZONA DEPARTMENT OF TRANSPORTATION INTERMODAL TRANSPORTATION DIVISION <b>BRIDGE GROUP STRUCTURE DETAIL</b>
APPROVED FOR DISTRIBUTION <i>J. Daniel Davis</i>	TUBULAR SIGN STRUCTURES TUBULAR CANTILEVER POST AND MAST ARM DETAILS
ROUTE LOCATION	DRAWING NO. SD 9.10 (3of5)
TRACS NO.	OF