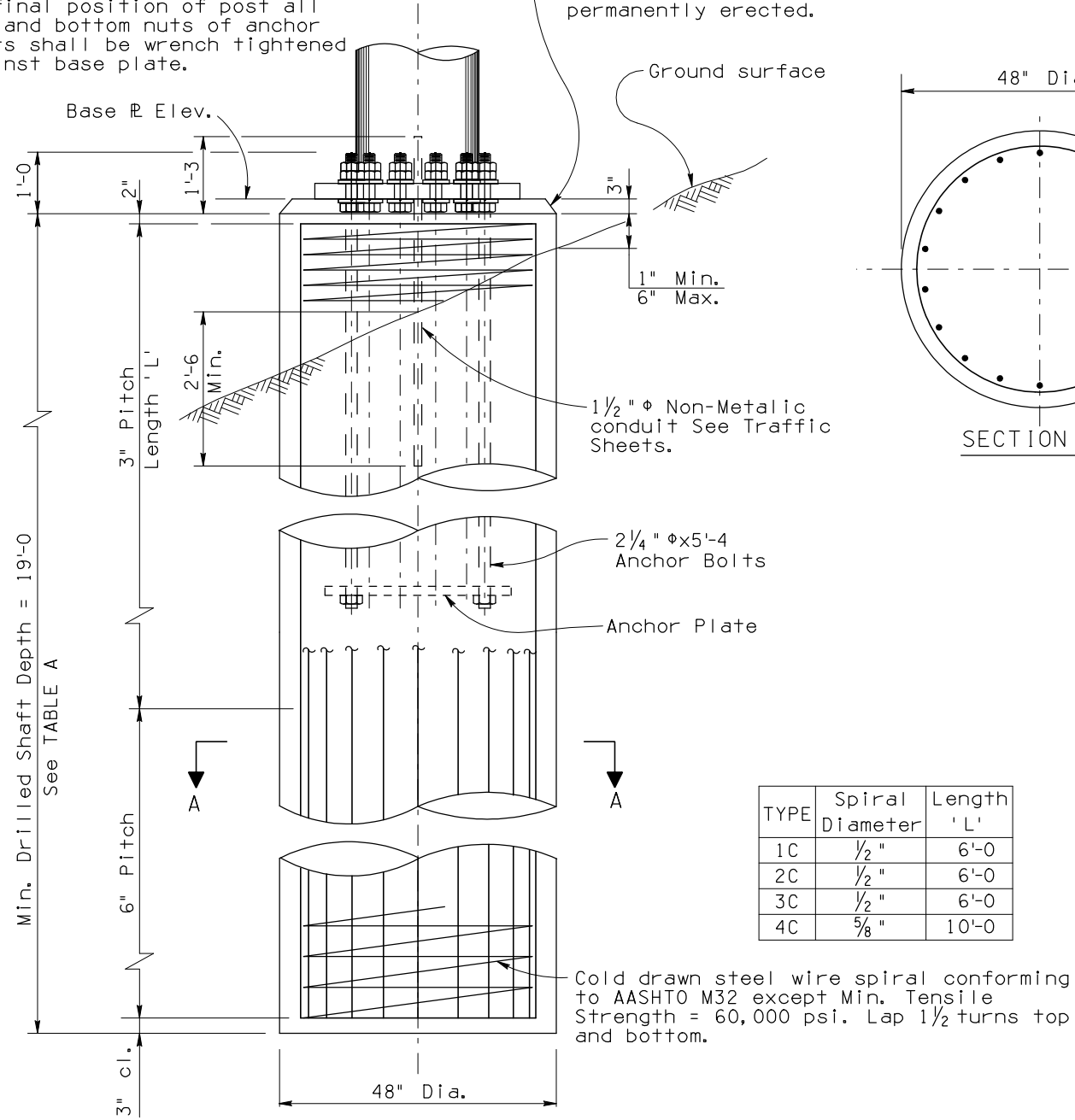


F.H.W.A. REGION	STATE	PROJECT NO.	SHEET NO.	TOTAL SHEETS	AS BUILT
9	ARIZ.				

**NOTE:**

Provide 2 Hardened Steel washers, 2 Hex nuts and one Leveling nut for each bolt.  
At final position of post all top and bottom nuts of anchor bolts shall be wrench tightened against base plate.

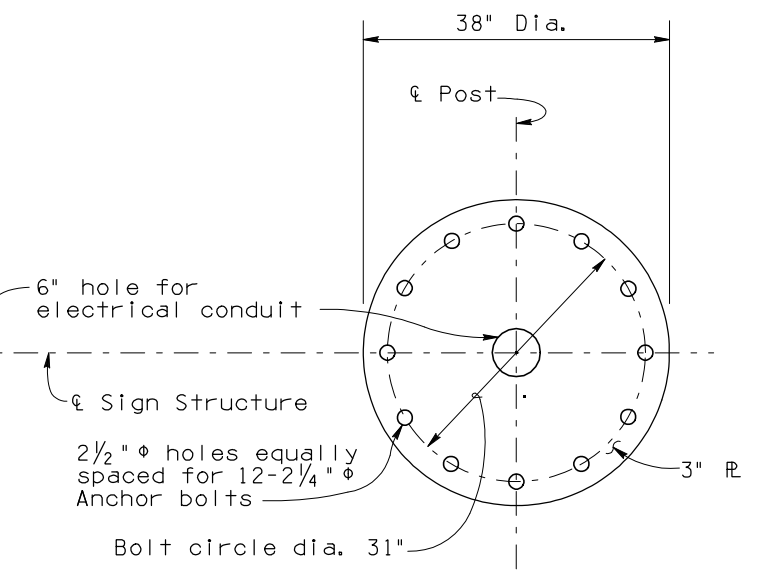
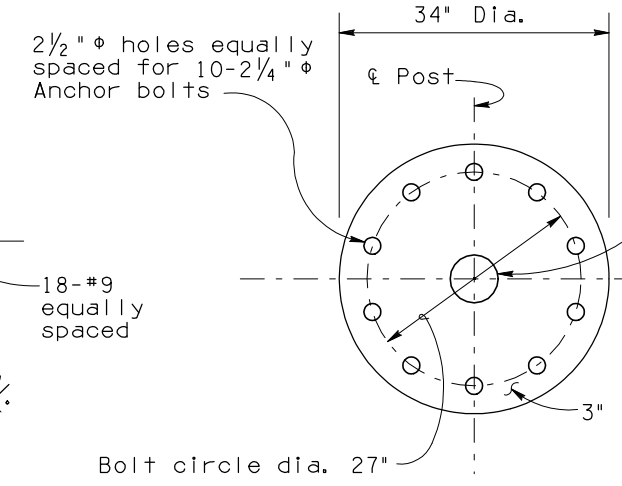
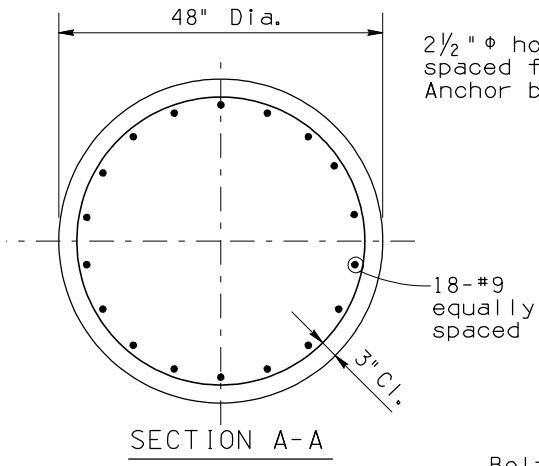
Space to be filled with non shrink grout after tubular structure is permanently erected.



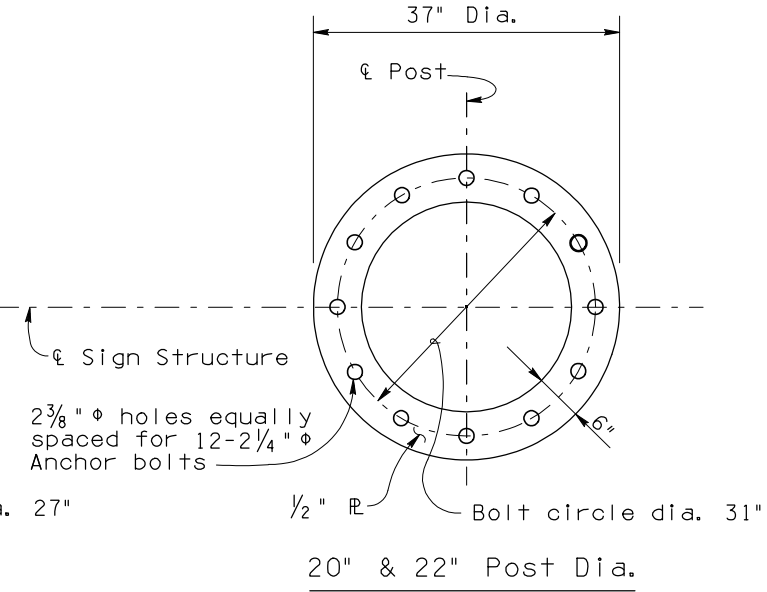
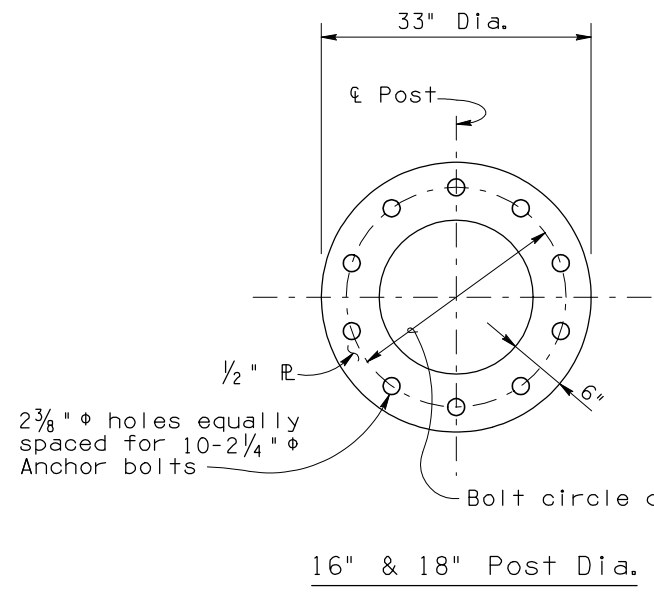
DRILLED SHAFT DETAILS

Max. Slope	'X'
8:1	0'
6:1	1'
4:1	2'
2:1	4'
1 1/2:1	5'
1:1	8'

Drilled Shaft Depth shall be adjusted for ground slope. Add value of 'X' in Table 'A' to the DRILLED SHAFT DEPTH to obtain total length of shaft.



BASE PLATE DETAILS



ANCHOR PLATE DETAILS

**NOTE:**

All anchor bolts shall conform to ASTM A307 Specifications. The upper 1'-0 shall be threaded and the upper 1'-2 galvanized in accordance with the requirements of ASTM A153.  
Drilled shaft shall be class 'S' concrete and placed against undisturbed material or compacted embankment.  
Provide bolt template during installation of anchor bolts. The bolt template shall be fabricated of 1/4" thick (Min.) steel plate, similar to anchor plate details, and shall be match drilled to each base plate.  
Drilled shafts shall be formed 6" Min. below ground surface. Compacted backfill shall be in place prior to erecting post.

Note to Designer: The information presented in this Standard Detail has been prepared in accordance with recognized engineering principles and is for general use. It should not be used for specific application without competent professional examination and verification of its suitability and applicability by a licensed professional engineer. Contents within the inner border line shall not be altered.

NO.	DATE	MADE BY	DESCRIPTION OF REVISIONS
1	6-01	J.R.P.	
2			
3			
4			

DESIGN APPROVED <i>James R. Pyne</i>	ARIZONA DEPARTMENT OF TRANSPORTATION INTERMODAL TRANSPORTATION DIVISION <b>BRIDGE GROUP STRUCTURE DETAIL</b>
APPROVED FOR DISTRIBUTION <i>J. Daniel Davis</i>	TUBULAR SIGN STRUCTURES TUBULAR CANTILEVER FOUNDATION DETAILS
ROUTE LOCATION	DRAWING NO. SD 9.10 (2of5)
TRACS NO.	OF