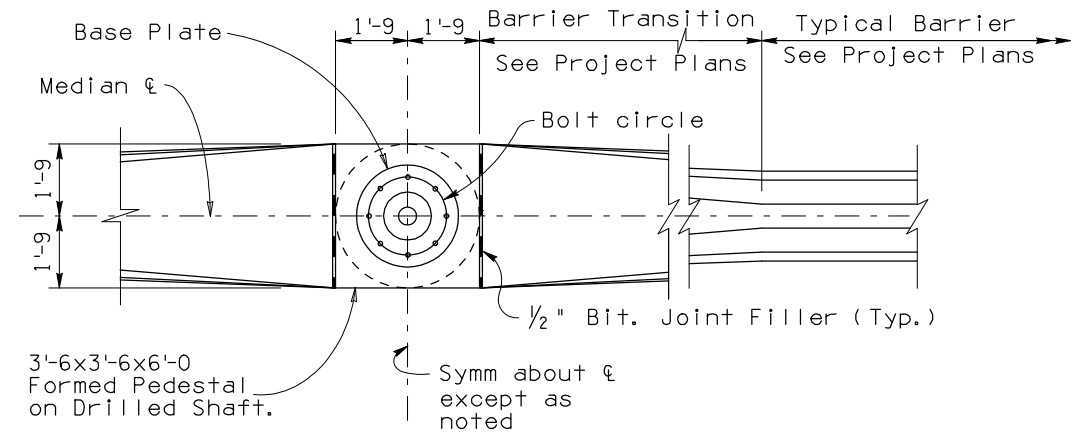
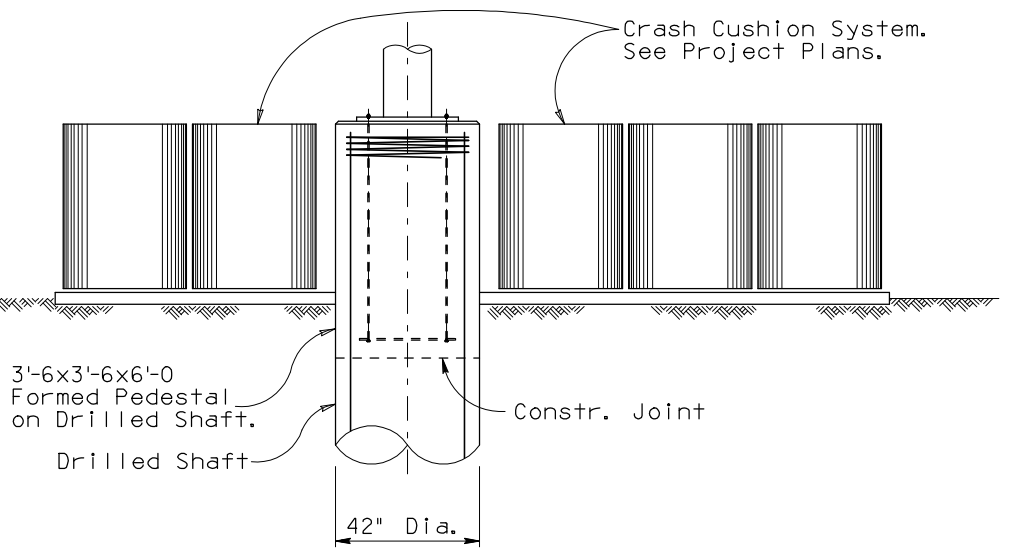


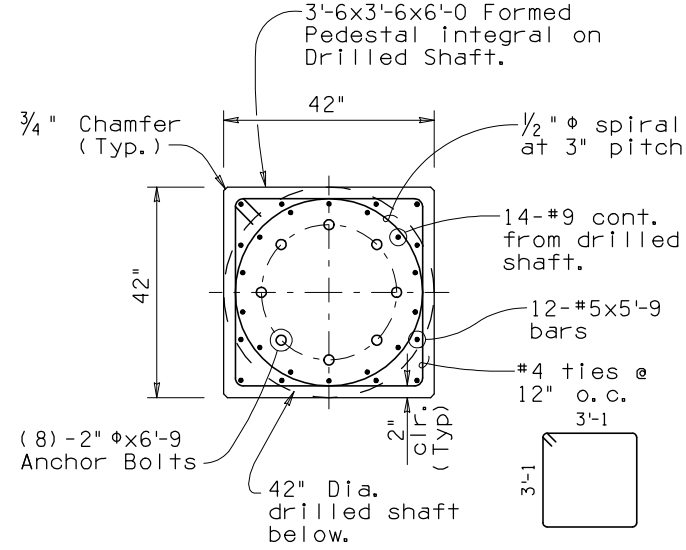
F.H.W.A. REGION	STATE	PROJECT NO.	SHEET NO.	TOTAL SHEETS	AS BUILT
9	ARIZ.				



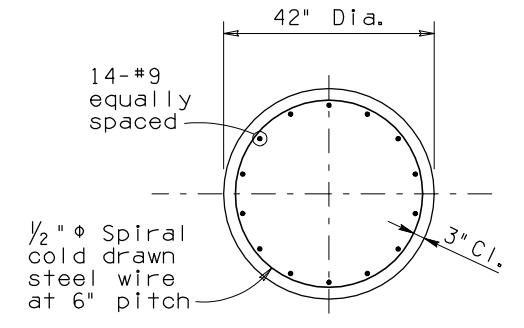
PLAN WITH BARRIER



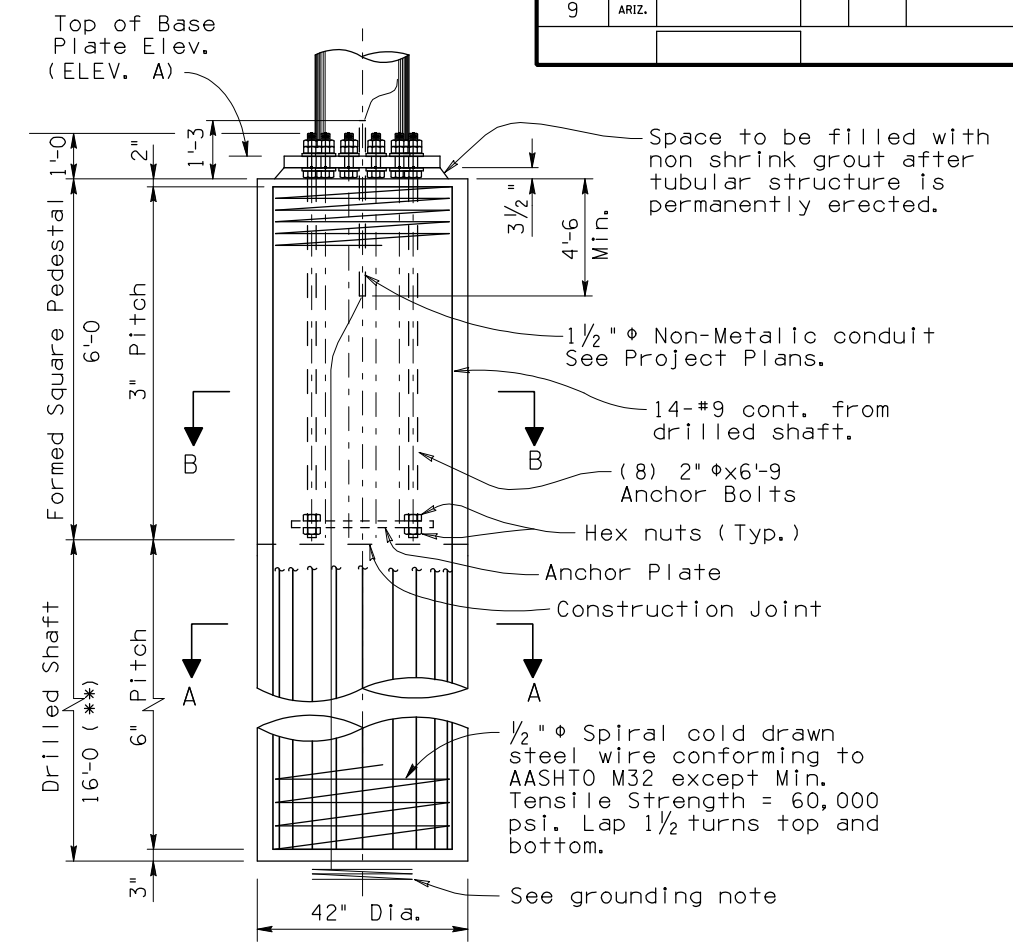
ELEVATION WITHOUT BARRIER



SECTION B-B



SECTION A-A



FOUNDATION DETAILS

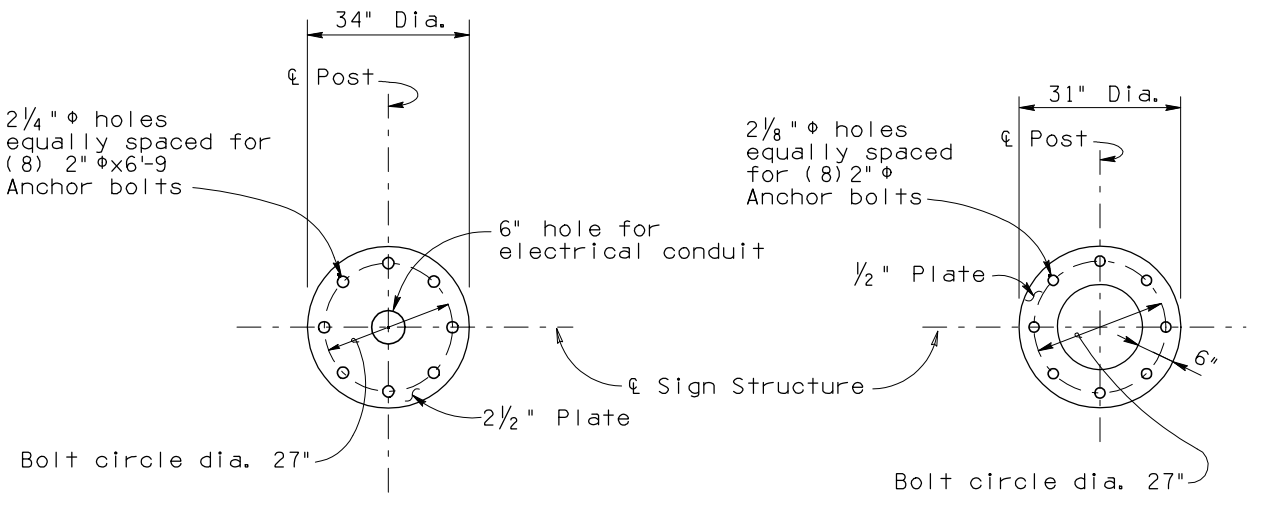
(**) Drilled shaft depth is based on uniform soils condition with unit weight=110 pcf, friction angle phi=29 degrees, modulus of subgrade reaction K=50 psf/ft. Depth or design should be revised by the Project Engineer of Record for weaker soils or rock embedment, and shown in the project plans.

NOTE:

All anchor bolts shall conform to ASTM A36 Specifications. The upper 1'-0 shall be threaded and the upper 1'-2 galvanized in accordance with the requirements of ASTM A153. Anchor bolts made of rods shall have 1'-0 thread at bottom with double nuts for anchor plate. Provide 2 Hardened Steel washers, 2 Hex nuts and one leveling nut for each bolt. At final position of post all top and bottom nuts of anchor bolts shall be wrench tightened against base plate. Drilled shaft shall be class 'S' concrete and placed against undisturbed material or compacted embankment. Provide bolt template during installation of anchor bolts. The bolt template shall be fabricated of 1/4" thick (min.) steel plate, similar to anchor plate details, and both the bolt template and the anchor plate shall be drilled to match base plate. A 25 ft. coil of no. 4 AWG bare copper conductor shall be installed before concrete is poured and connected to pole grounding screw in the hand hole.

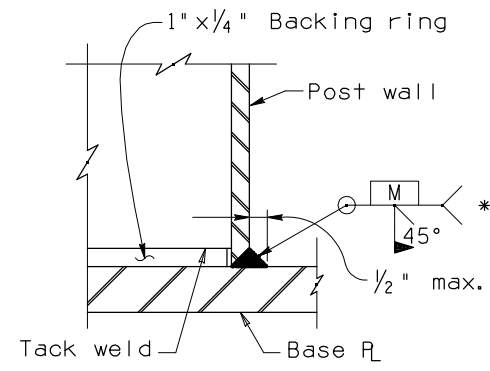
Note to Designer: This Standard Detail has been prepared in accordance with recognized engineering principles and is for general use. It should not be used for specific application without competent professional examination and verification of its suitability and applicability by a licensed professional engineer. Contents within the inner border line shall not be altered.

NO.	DATE	DESCRIPTION OF REVISIONS
1	5-00	Original Issue
2		
3		
4		



BASE PLATE DETAIL

ANCHOR PLATE DETAIL



POST TO BASE PLATE WELD DETAIL

* Preheat as per AWS reqm't.

DESIGN APPROVED <i>Shafiq U. Hasan</i>	ARIZONA DEPARTMENT OF TRANSPORTATION INTERMODAL TRANSPORTATION DIVISION BRIDGE GROUP STRUCTURE DETAIL
APPROVED FOR DISTRIBUTION <i>Tean A. Nehme</i>	MEDIAN SIGN STRUCTURE (ONE SIDED) FOUNDATION DETAILS
ROUTE	LOCATION
TRACS NO.	DRAWING NO. SD 9.02(2 OF 5) OF