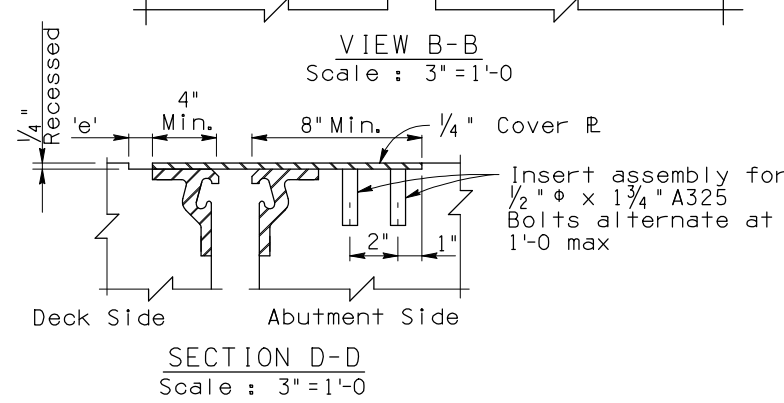
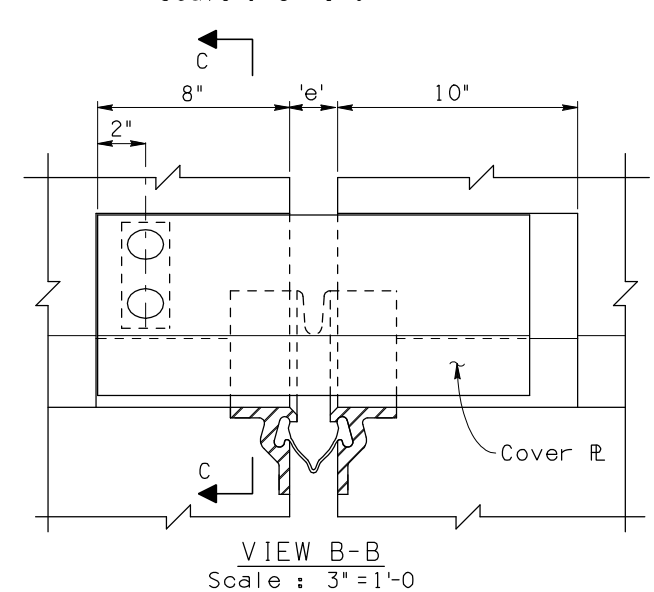
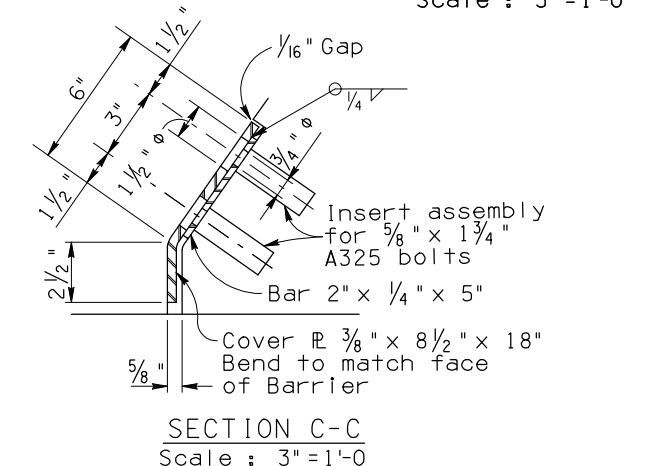
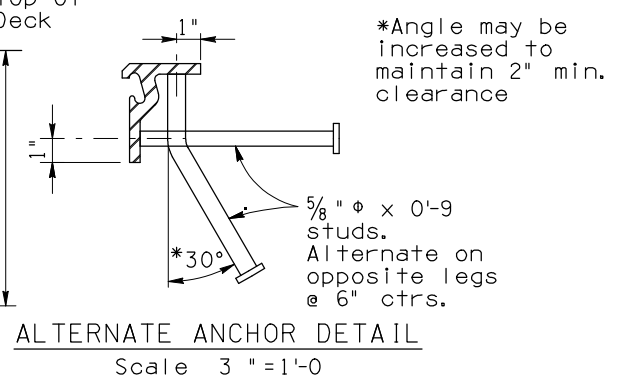
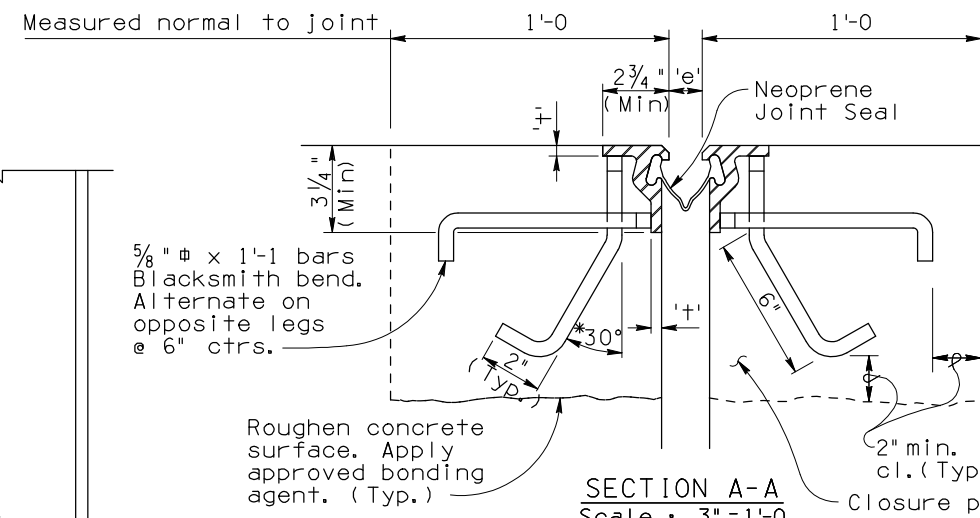
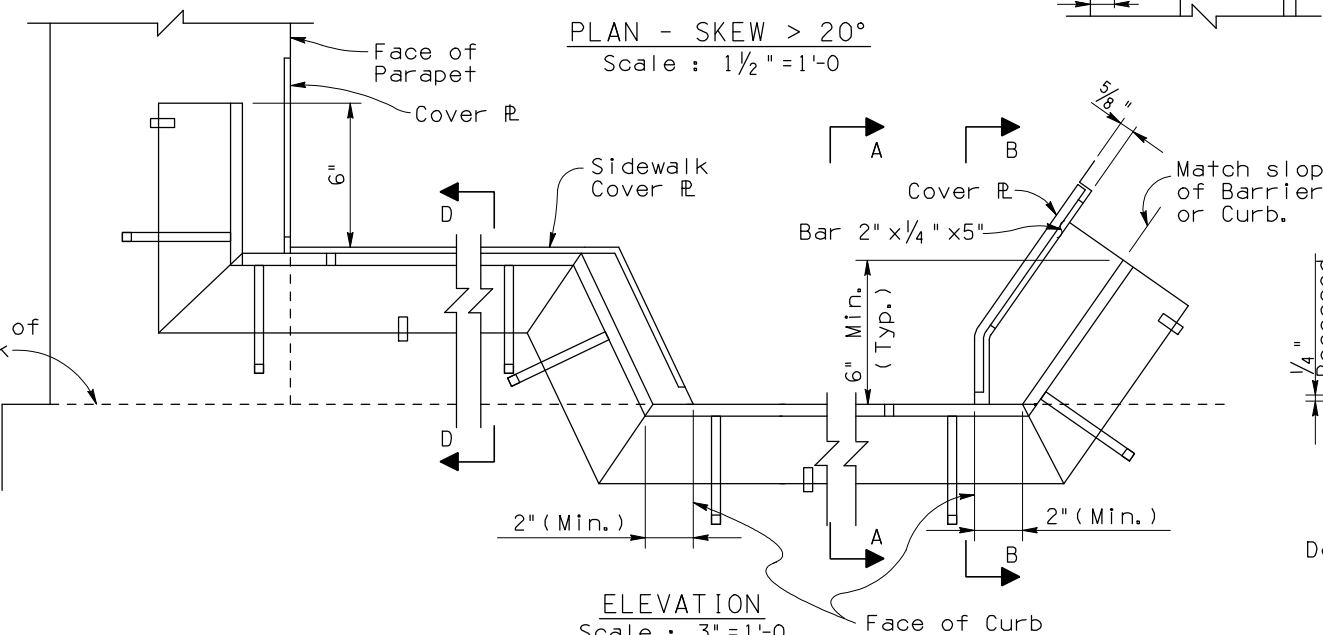
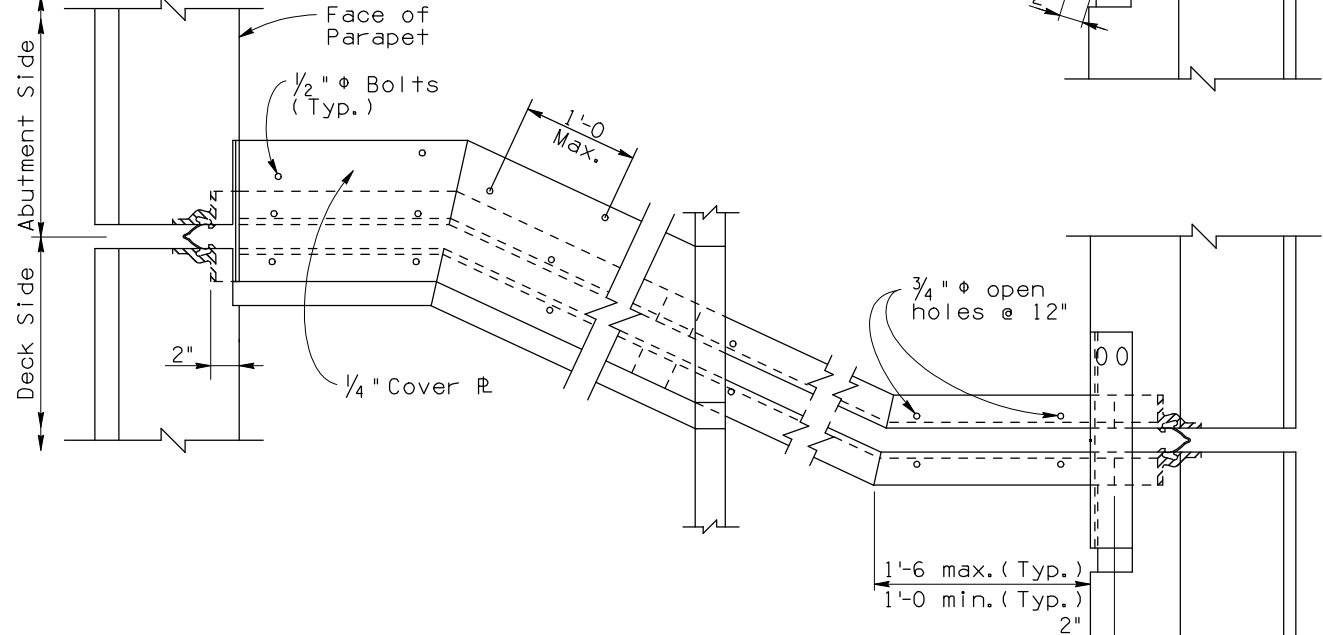
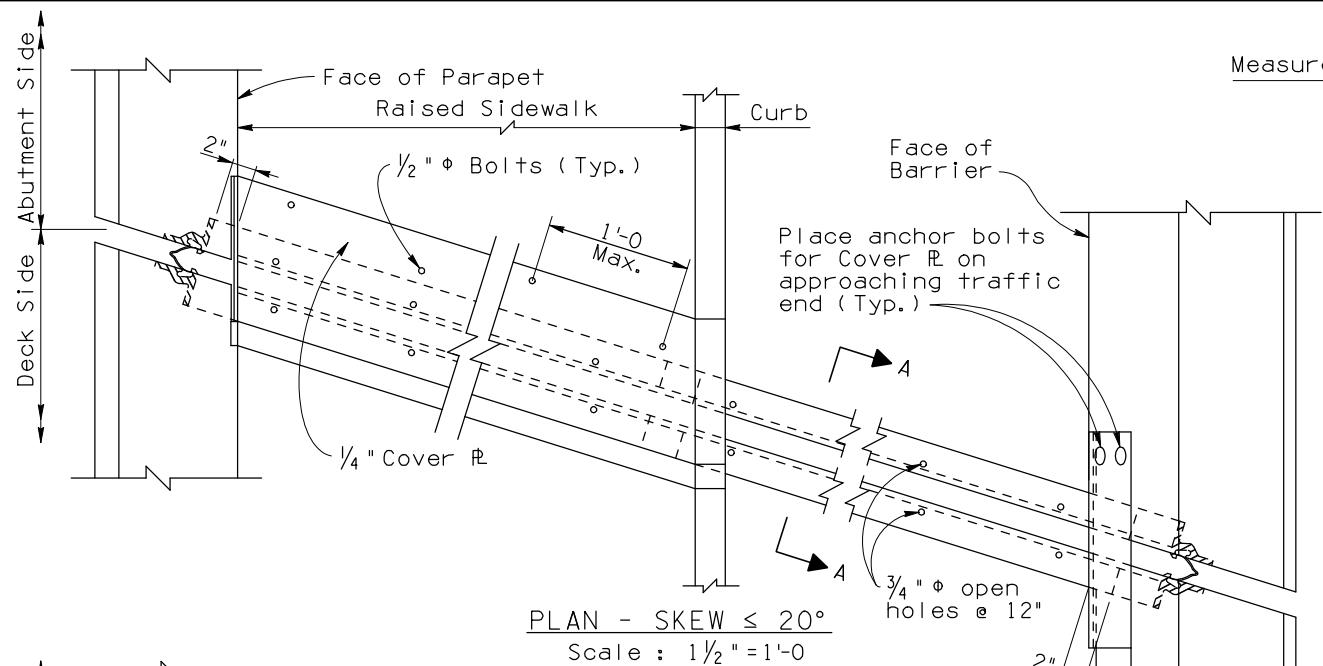
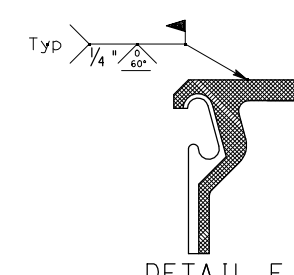


F.H.W.A. REGION	STATE	PROJECT NO.	SHEET NO.	TOTAL SHEETS	AS BUILT
9	ARIZ.				



NOTES:
The Strip Seal Joint may be used only for movement ratings of 4 inches or less.
The 'e' value may require recalculation and Movement Rating increased to accommodate minimum installation opening prior to approval of the shop drawings.
Retainer rails may be of A36 or A588 extrusions. Minimum weight per foot = 8.5 Lbs
Minimum thickness, 't' = $\frac{3}{8}$ inches
Rails shall be supplied in the maximum length practical consistent with normal manufactured length of the rail. Rail splices when required shall be field welded per DETAIL E.
The neoprene seal shall be supplied continuous full length without splices.
Unless noted otherwise extrusions using A36 steel and all plates shall be painted. Surfaces in contact with concrete and recess area for strip seal shall not be painted. A588 extrusions and plates need not be painted.
Joint seal assembly to be used in conjunction with closure pour. (See bridge drawings for limits). Closure pour shall not be placed until final deck surface is within the tolerance specified.
Sidewalk cover plates shall be $\frac{1}{4}"$ thick galvanized steel with non-slip (deformed) surface. Details may vary from those shown here and shall be shown on the shop drawings.
Item No. 6011345, Deck Joint Assembly (Strip Seal Joint) Measurement: LF.



DESIGN APPROVED <i>Shafiq U. Hasan</i>	ARIZONA DEPARTMENT OF TRANSPORTATION INTERMODAL TRANSPORTATION DIVISION BRIDGE GROUP STRUCTURE DETAIL
APPROVED FOR DISTRIBUTION <i>J. Daniel Davis</i>	DECK JOINT ASSEMBLY STRIP SEAL
ROUTE LOCATION	DRAWING NO. SD 3.02
TRACS NO.	OF

Note to Designer:
 The information presented in this Standard Detail has been prepared in accordance with recognized engineering principles and is for general use. It should not be used for specific application without competent professional examination and verification of its suitability and applicability by a licensed professional engineer. Contents within the inner border line shall not be altered.

NO	DESCRIPTION OF REVISIONS	DATE	MADE BY
1	Original Issue	9-01	6/11/h.
2	Drawing Number Change	8-02	6/11/h.
3			
4			