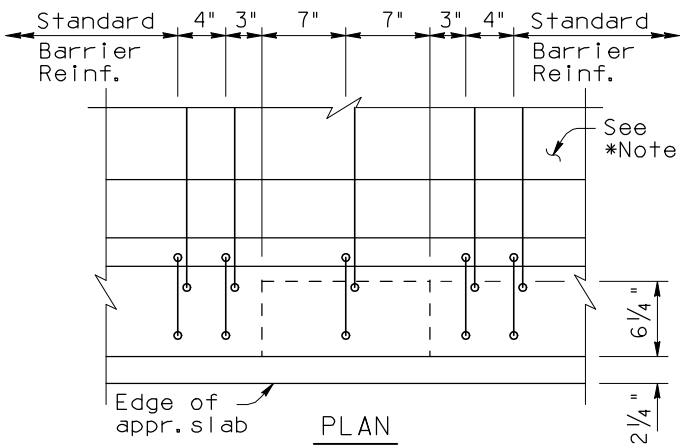
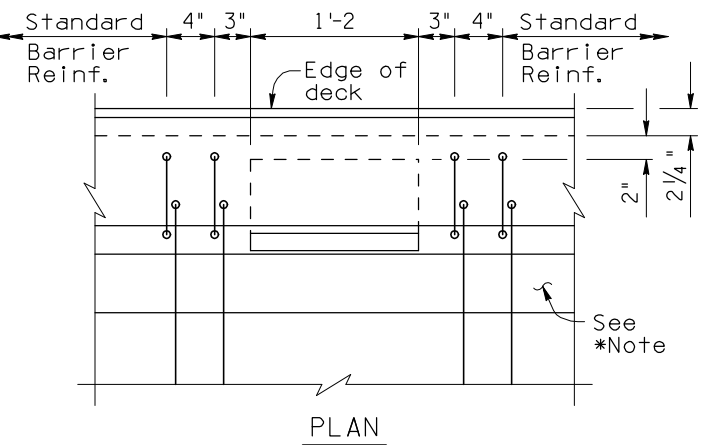


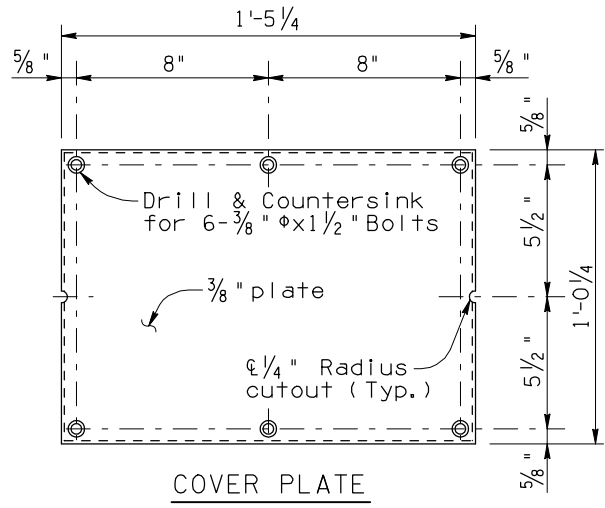
F.H.W.A. REGION	STATE	PROJECT NO.	SHEET NO.	TOTAL SHEETS	AS BUILT
9	ARIZ.				



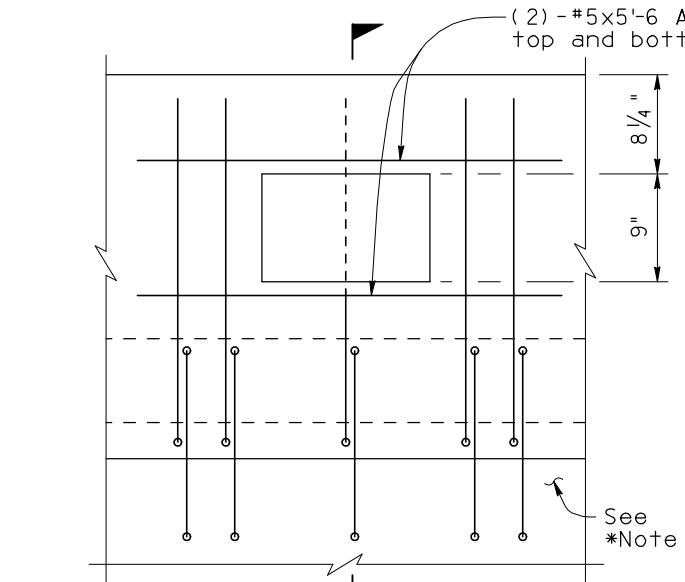
PLAN



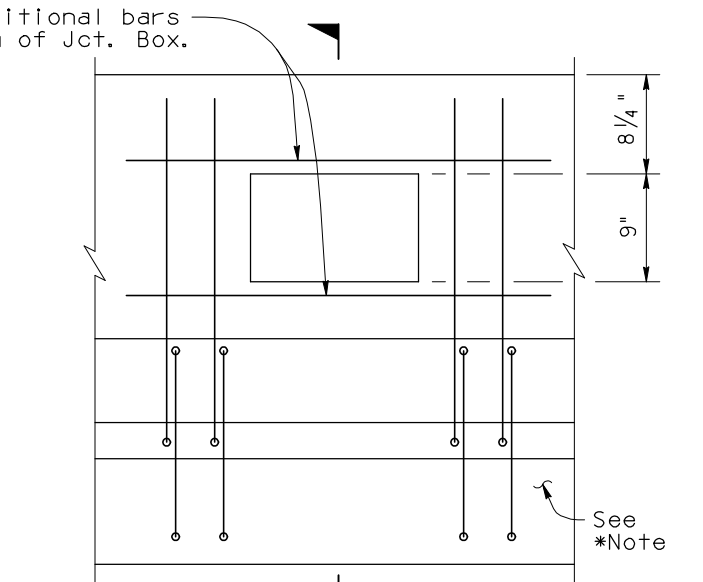
PLAN



COVER PLATE

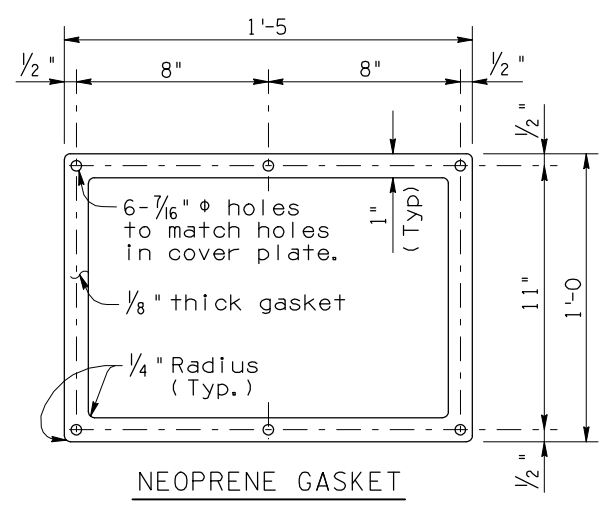


ELEVATION (Back Face)

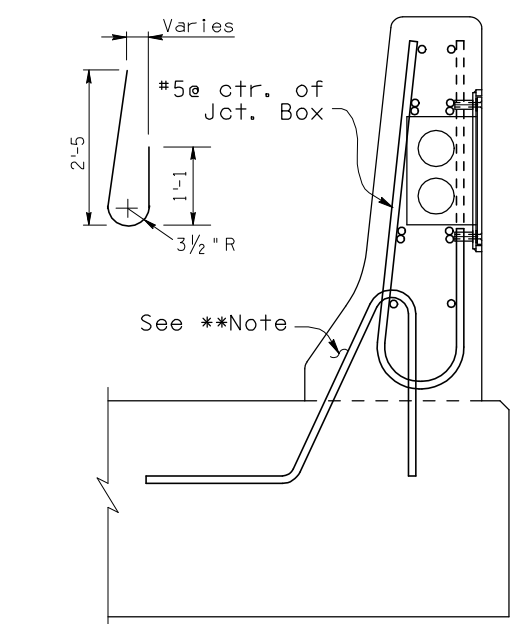


ELEVATION (Front Face)

*Note: Horiz. barrier reinforcement not shown for clarity.

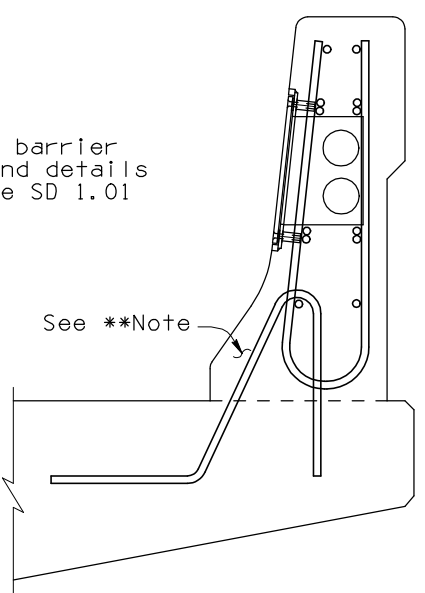


NEOPRENE GASKET

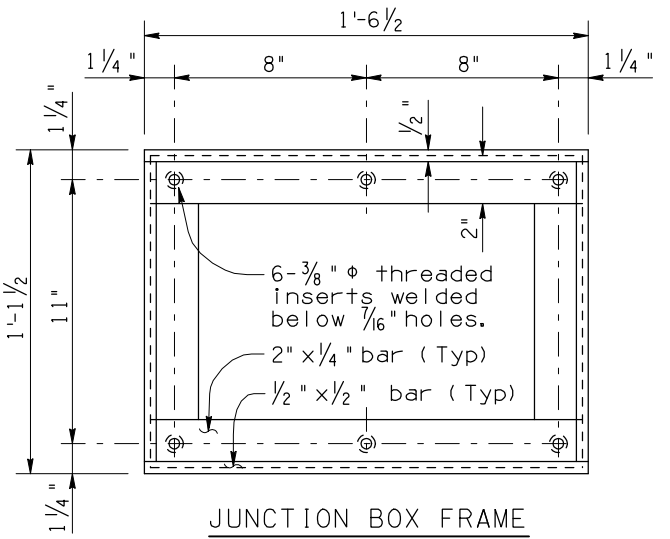


TYPE I JUNCTION BOX (At Approach Transition) 1

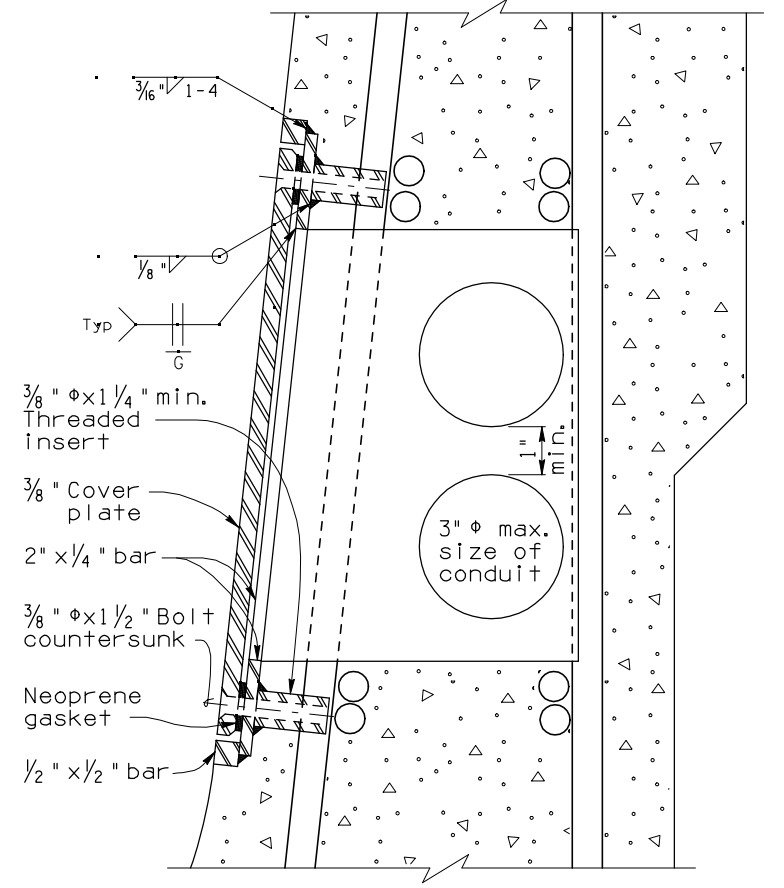
**Note: For concrete barrier dimensions and details not shown see SD 1.01 or SD 1.02



TYPE II JUNCTION BOX (On Bridge) 2



JUNCTION BOX FRAME



JUNCTION BOX DETAIL

GENERAL NOTES:
 Construction Specification - Arizona Department of Transportation Standard Specifications for Road and Bridge Construction, Latest Edition.
 Design Specifications - AASHTO Standard Specifications for Highway Bridges, Latest Edition.
 Structural steel shall conform to ASTM A36.
 All welding shall conform to the requirements of the American Welding Society, ANSI/AASHTO/AWS D1.5-96 Bridge Welding Code.
 All bolts shall conform to ASTM A307. Threaded inserts shall be loop type (U.N.C. thread).
 All bolts, nuts and washers shall be galvanized in accordance with ASTM A153. All other steel shall be galvanized after fabrication in accordance with ASTM A123.
 Chamfer all bottom edges of cover plate 1/8" x 45°. Cover plate shall have 1" letters embedded 1/8" to say: "ADOT ELECTRICAL HIGH VOLTAGE".

Item No. 7320475
 TYPE I JUNCTION BOX
 Measure: Each
 Item No. 7320476
 TYPE II JUNCTION BOX
 Measure: Each
 Junction Box for 32" barrier shown. Details similar for 42" barrier.

DESIGN APPROVED <i>Henry Man-Fa Sung</i>		ARIZONA DEPARTMENT OF TRANSPORTATION INTERMODAL TRANSPORTATION DIVISION BRIDGE GROUP STRUCTURE DETAIL	
APPROVED FOR DISTRIBUTION <i>J. Daniel Davis</i>		BARRIER JUNCTION BOX	
ROUTE	LOCATION	DRAWING NO. SD 1.11	
TRACS NO.		OF	

Note to Designer: The information presented in this Standard Detail has been prepared in accordance with recognized engineering principles and is for general use. It should not be used for specific application without competent professional examination and verification of its suitability and applicability by a licensed professional engineer. Contents within the inner border line shall not be altered.

NO.	DESCRIPTION OF REVISIONS	MADE BY	DATE
1	Original Issue	H.M.S.	5-82
2			
3			
4			