



# South Mountain Transportation Corridor Study Update

March 2006

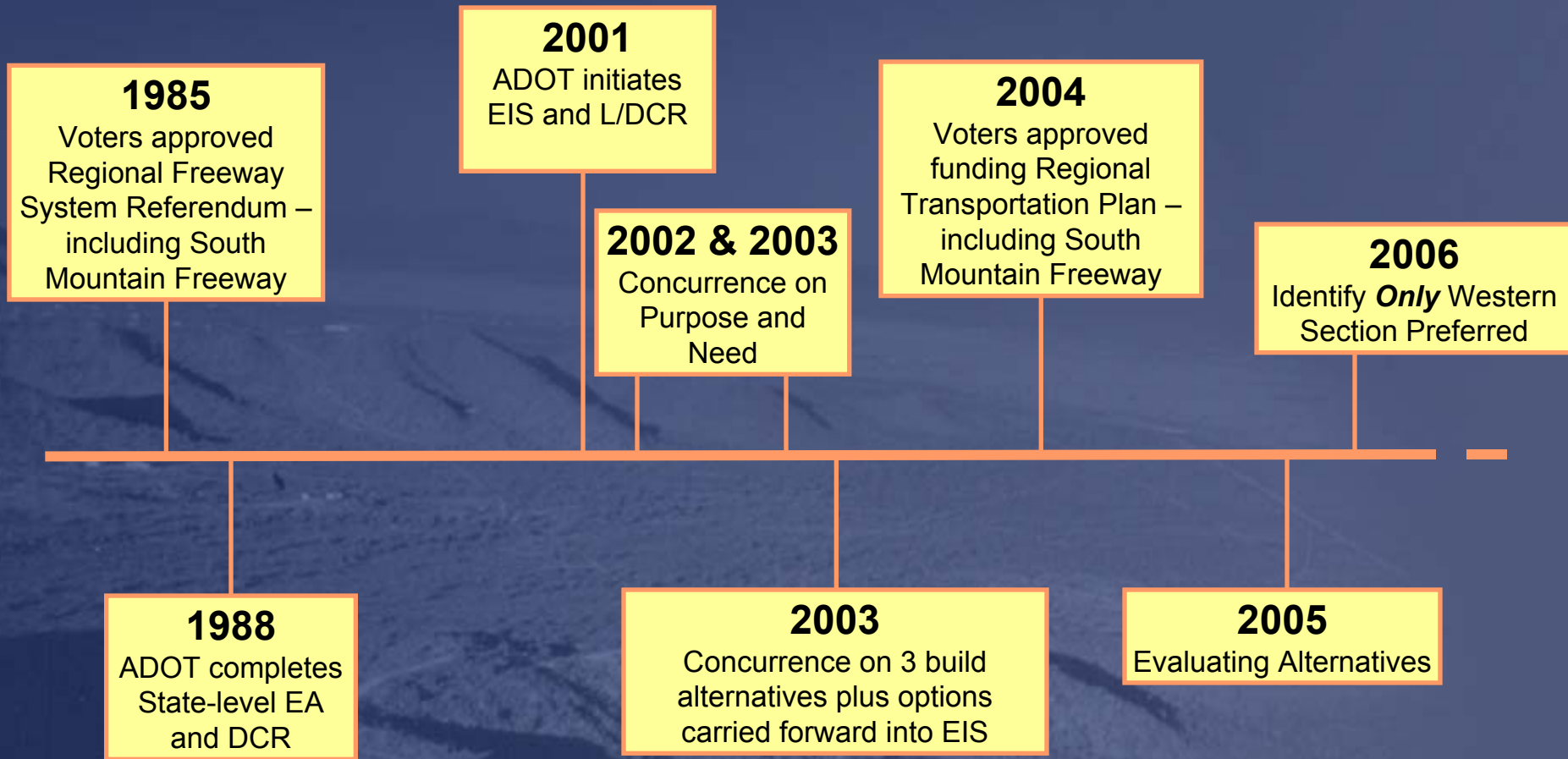


# Agenda

- Project Timeline
- Study Update
  - Design
  - Impacts
  - Local Access Affects
- Schedule



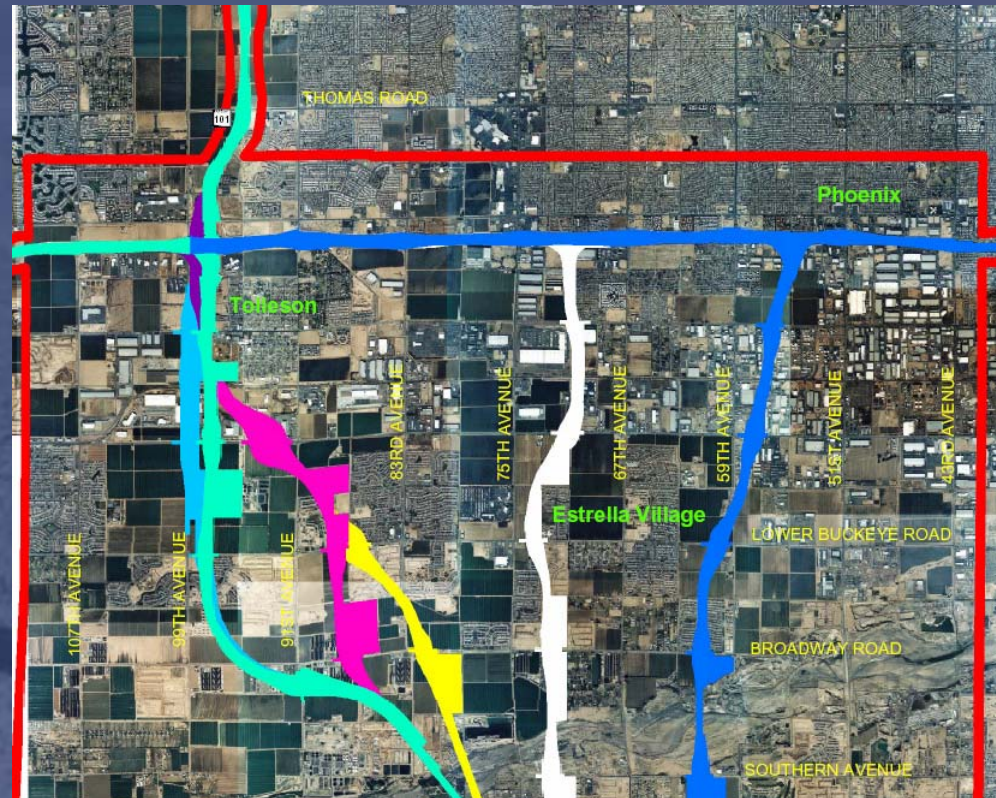
# Project Timeline





# Study Update Design

- Three alternative locations for connecting South Mountain Freeway to I-10
  - 55<sup>th</sup> Avenue Alternative
  - 71<sup>st</sup> Avenue Alternative
  - Loop 101 Alternative





# Local Access Comments

**We are here to find out your thoughts regarding changing access to and from I-10.**

**To see more detailed information, visit the maps and boards provided.**

**Staff are available to answer your questions.**



# Study Update Design

- 55<sup>th</sup> Avenue and 71<sup>st</sup> Avenue alternatives require construction on I-10 from Loop 101 to I-17
- Loop 101 Alternative requires construction on I-10 from Dysart Road to 59<sup>th</sup> Avenue and Loop 101 from I-10 north to Bethany Home Road



# Study Update Impacts

Some of the impacts studied at each connection location include:

- Right-of-way needed
- Businesses and residences affected directly by right-of-way takes
- Local access from arterial streets to I-10



# Study Update

## Local Access Affects

### 55<sup>th</sup> Avenue Alternative

- 43<sup>rd</sup> Avenue
  - Eastbound exit removed
  - Westbound entrance removed
  - Movements to be accommodated with access roads either side of freeway
- 67<sup>th</sup> Avenue
  - Eastbound entrance removed
  - Westbound exit removed
  - Movements to be accommodated with access roads either side of freeway



# Study Update

## Local Access Affects

### 71<sup>st</sup> Avenue Alternative

- 59<sup>th</sup> Avenue
  - Eastbound exit removed
  - Westbound entrance removed
  - Movements to be accommodated with access roads either side of the freeway
- 83<sup>rd</sup> Avenue
  - Eastbound entrance removed
  - Westbound exit removed
  - Movements to be accommodated with access roads either side of the freeway



# Study Update

## Local Access Affects

### Loop 101 Partial Reconstruction (101L)

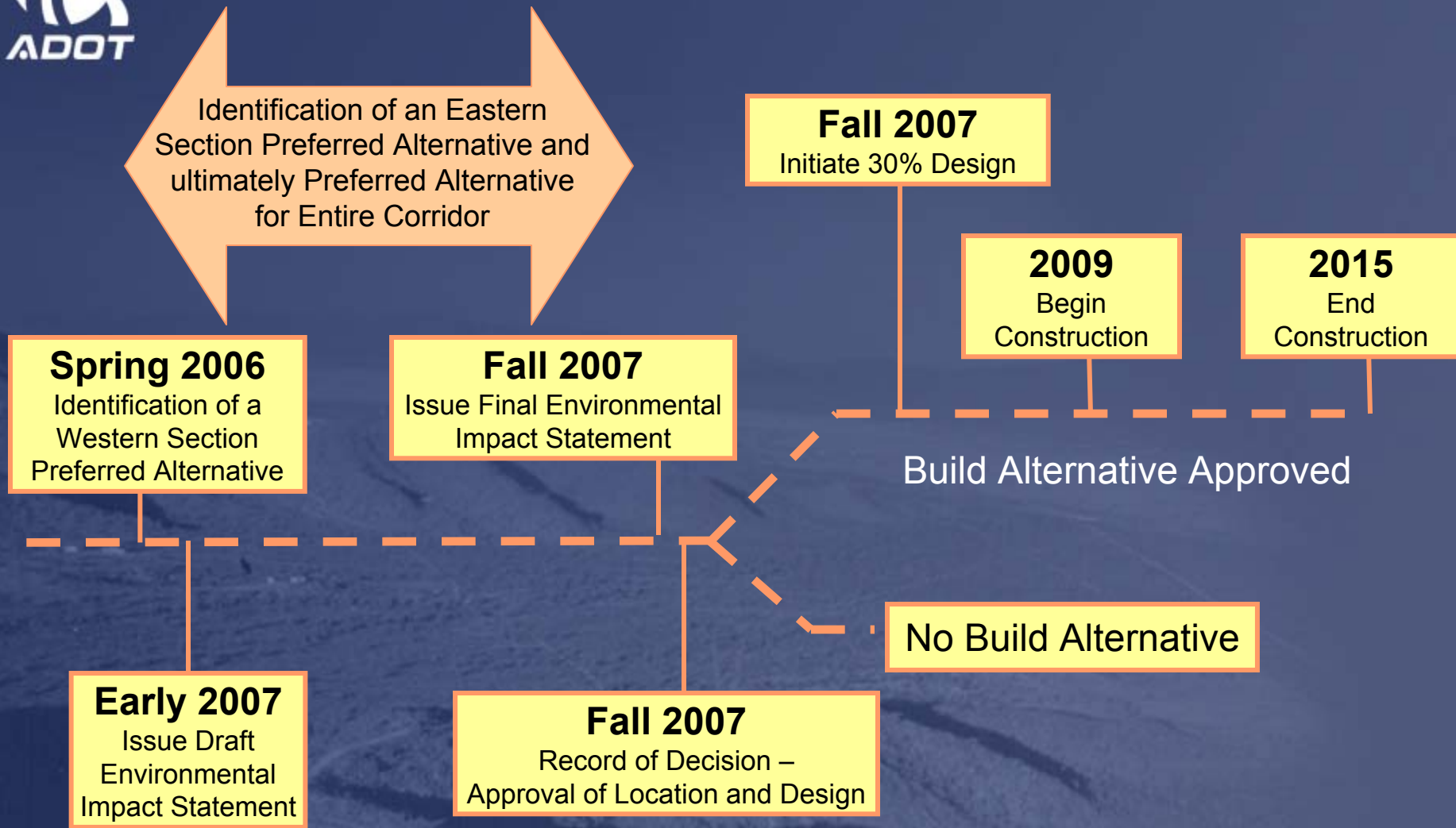
- 99<sup>th</sup> Avenue eastbound entrance removed
- Movement to be accommodated on access road

### Loop 101 Full Reconstruction (101L)

- 99th Avenue eastbound entrance removed
- McDowell Road ramps removed



# Schedule \*



\* Assumes No GRIC Alternatives are available to study



# Questions & Answers

Project Website:

**[www.SouthMountainFreeway.com](http://www.SouthMountainFreeway.com)**

Project Telephone Information:

**602-712-7006**

Project Mailing Address:

**HDR, Inc.**

**3200 East Camelback Road, Suite 350**

**Phoenix, AZ 85018**