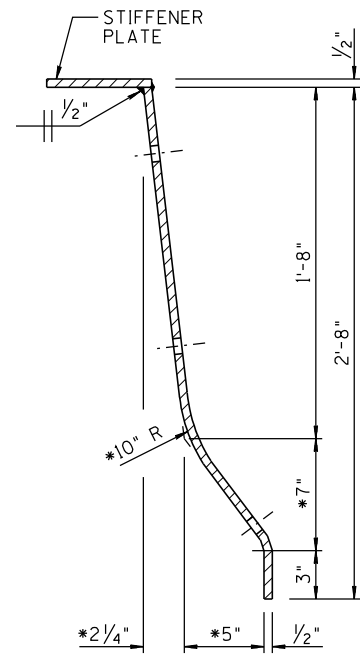
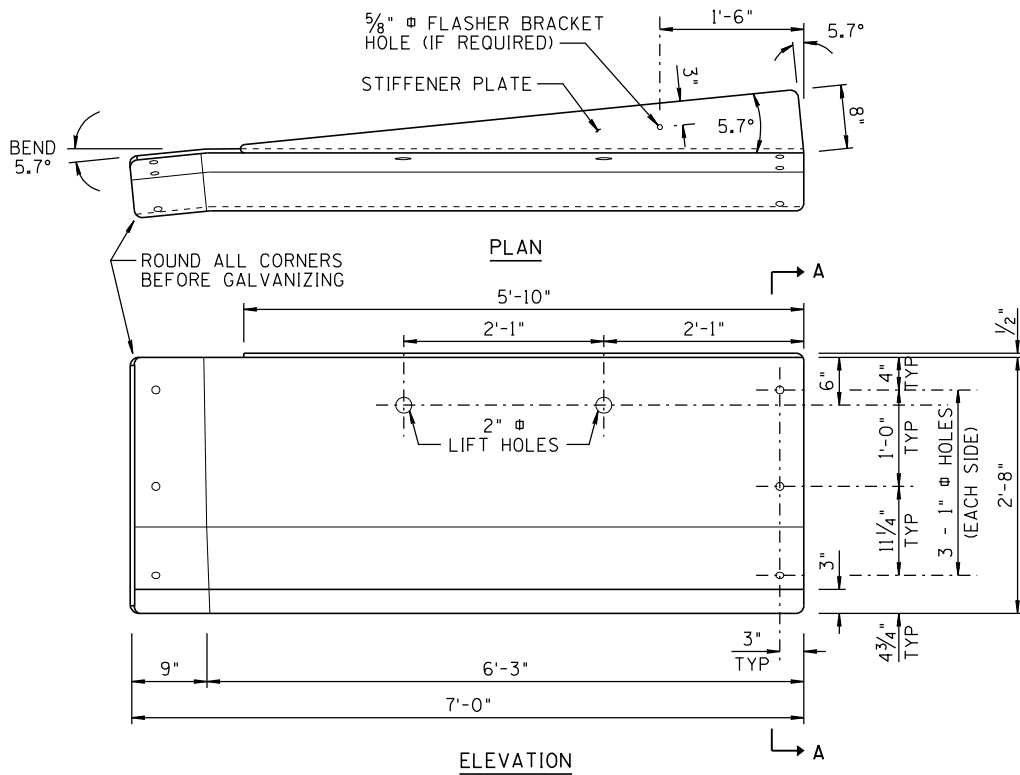
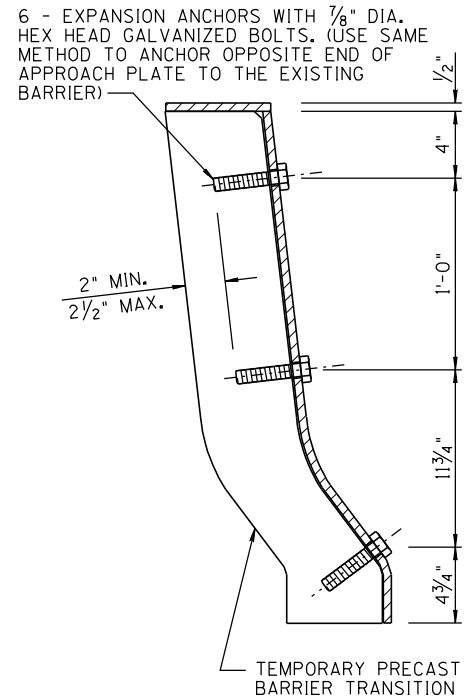


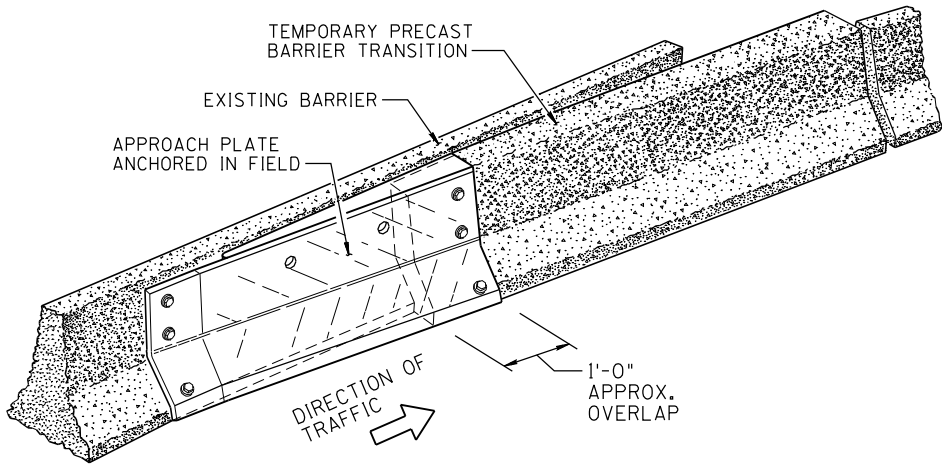
NO	DESCRIPTION OF REVISIONS	MADE BY	DATE
1	NEW ISSUE	L. LOPEZ	10/02
2			
3			
4			



SECTION A-A  
(SHOWN BENT WITH WELDED STIFFENER PLATE)



APPROACH PLATE ANCHORAGE  
(PERFORMED IN THE FIELD TO ACHIEVE PROPER PLACEMENT AND HOLE ALIGNMENT)



**NOTES:**

1. THE APPROACH PLATE SHALL BE 1/2" THICK STEEL FABRICATED TO CONFIGURATION SHOWN.
2. STRUCTURAL STEEL SHALL BE ASTM A123 AND GALVANIZED AFTER BENDING OR WELDING.
3. SEE STANDARD DRAWING C-5 SHEET 1 OF 2 FOR DETAILS OF PRECAST TEMPORARY CONCRETE TRAFFIC BARRIER TRANSITION LEFT SIDE APPROACH.
4. WHEN THE APPROACH PLATE IS REMOVED THE HOLES IN EXISTING BARRIER SHALL BE GROUTED.
- \*5. DIMENSIONS ARE TO THE INTERSECTION POINT OF THE PLATE SLOPES. CONSTRUCT THE 10 INCH RADIUS TO PROVIDE A SMOOTH TRANSITION BETWEEN THE SLOPES.

SHEET 2 OF 2  
NOT TO SCALE

DESIGN APPROVED	ARIZONA DEPARTMENT OF TRANSPORTATION INTERMODAL TRANSPORTATION DIVISION STANDARD DRAWINGS	REV.
APPROVED FOR CONSTRUCTION		10/02
SIGNATURE ON FILE		DRAWING NO. C-5
APPROACH PLATE TRANSITION SECTION FOR TEMPORARY CONCRETE BARRIER		