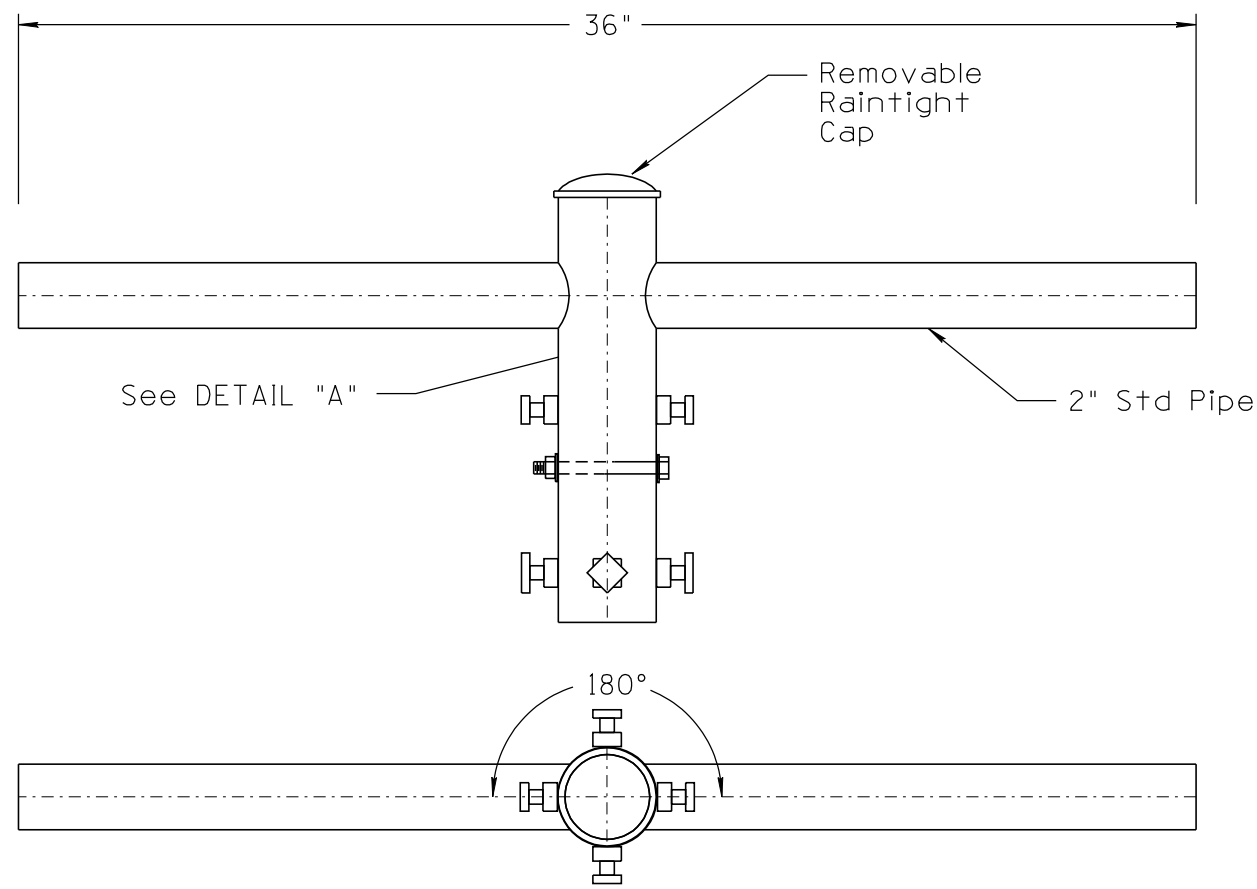
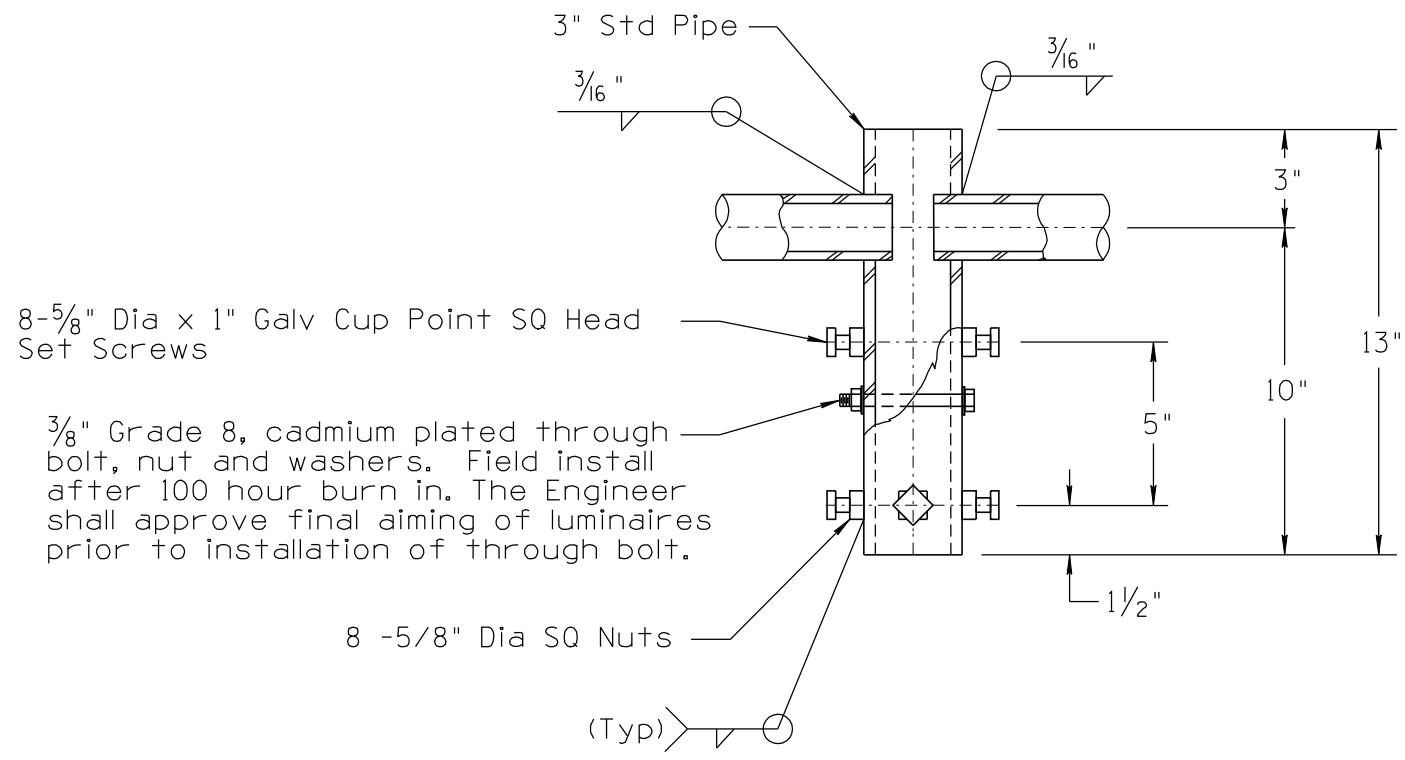


NO	1	2010 EDITION	DESCRIPTION OF REVISIONS	MADE BY	C. COLE	DATE	03/10	NO	3	4	DESCRIPTION OF REVISIONS	MADE BY	DATE
----	---	--------------	--------------------------	---------	---------	------	-------	----	---	---	--------------------------	---------	------



TWIN LUMINAIRE BRACKET



8-5/8" Dia x 1" Galv Cup Point SQ Head Set Screws

3/8" Grade 8, cadmium plated through bolt, nut and washers. Field install after 100 hour burn in. The Engineer shall approve final aiming of luminaires prior to installation of through bolt.

8 -5/8" Dia SQ Nuts

(Typ)

DETAIL "A"

NOT TO SCALE

DESIGN APPROVED	ARIZONA DEPARTMENT OF TRANSPORTATION INTERMODAL TRANSPORTATION DIVISION TRAFFIC SIGNALS AND LIGHTING STANDARD DRAWINGS	REVISION	03/10
SIGNATURE		DRAWING NO.	T.S. 4-17
APPROVED FOR DISTRIBUTION	TYPE "U" POLE ROUND POLE / SQUARE BASE	SHEET NO.	6 OF 6
ON FILE			