


Legend

- C-1 Corridor Alternative Designation
- C-2 Corridor Alternative Sub Segment Alternative Designation
- Retained Corridor Alternatives
- Retained Corridor Alternatives Following Existing Roadway Corridor
- Corridor Alternatives Recommended for Elimination
- Potential Traffic Interchange Location

N



0 0.25 0.5
Miles

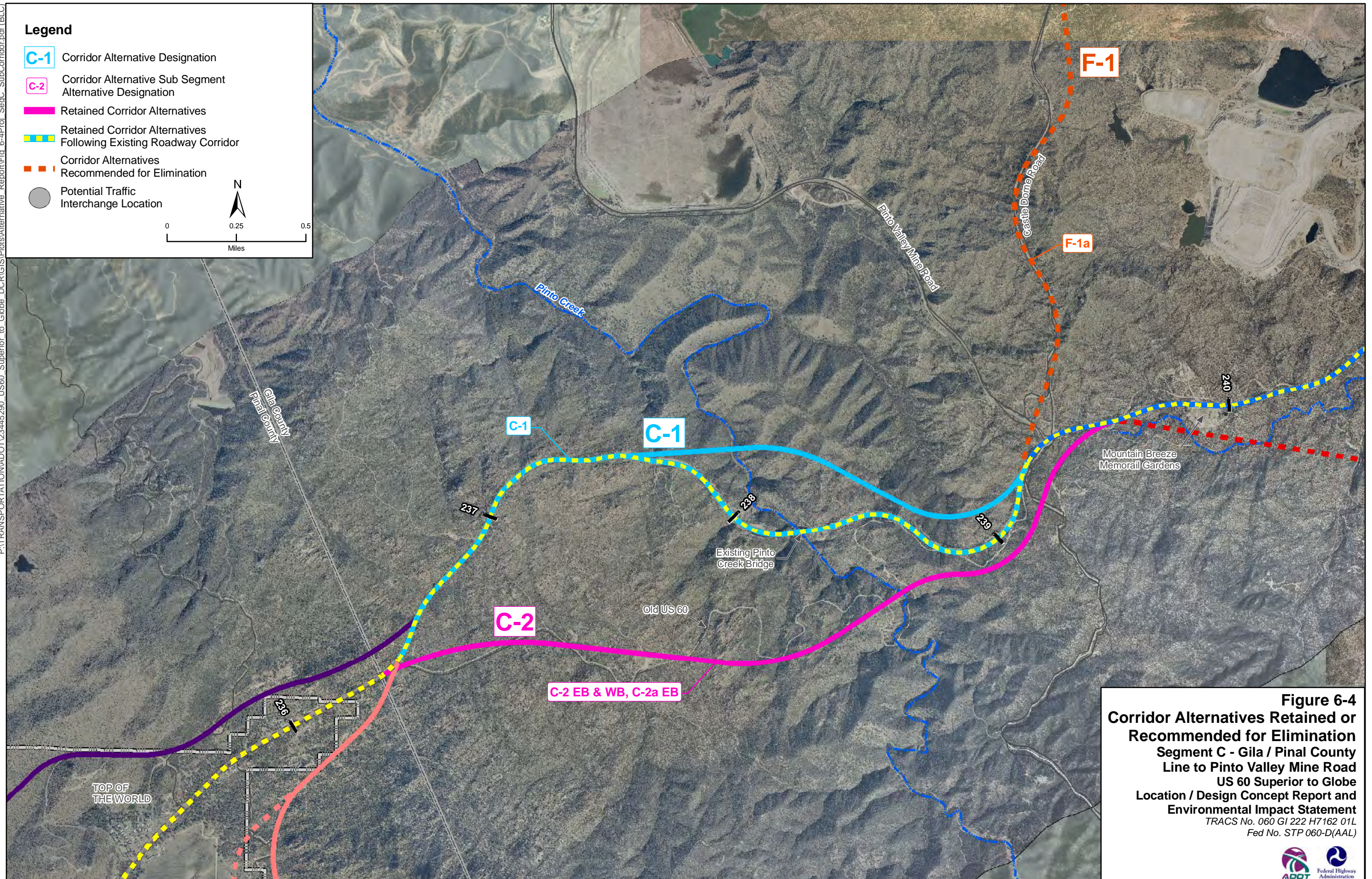


Figure 6-4
Corridor Alternatives Retained or Recommended for Elimination
 Segment C - Gila / Pinal County
 Line to Pinto Valley Mine Road
 US 60 Superior to Globe
 Location / Design Concept Report and
 Environmental Impact Statement
 TRACS No. 060 GI 222 H7162 01L
 Fed No. STP 060-D(AAL)