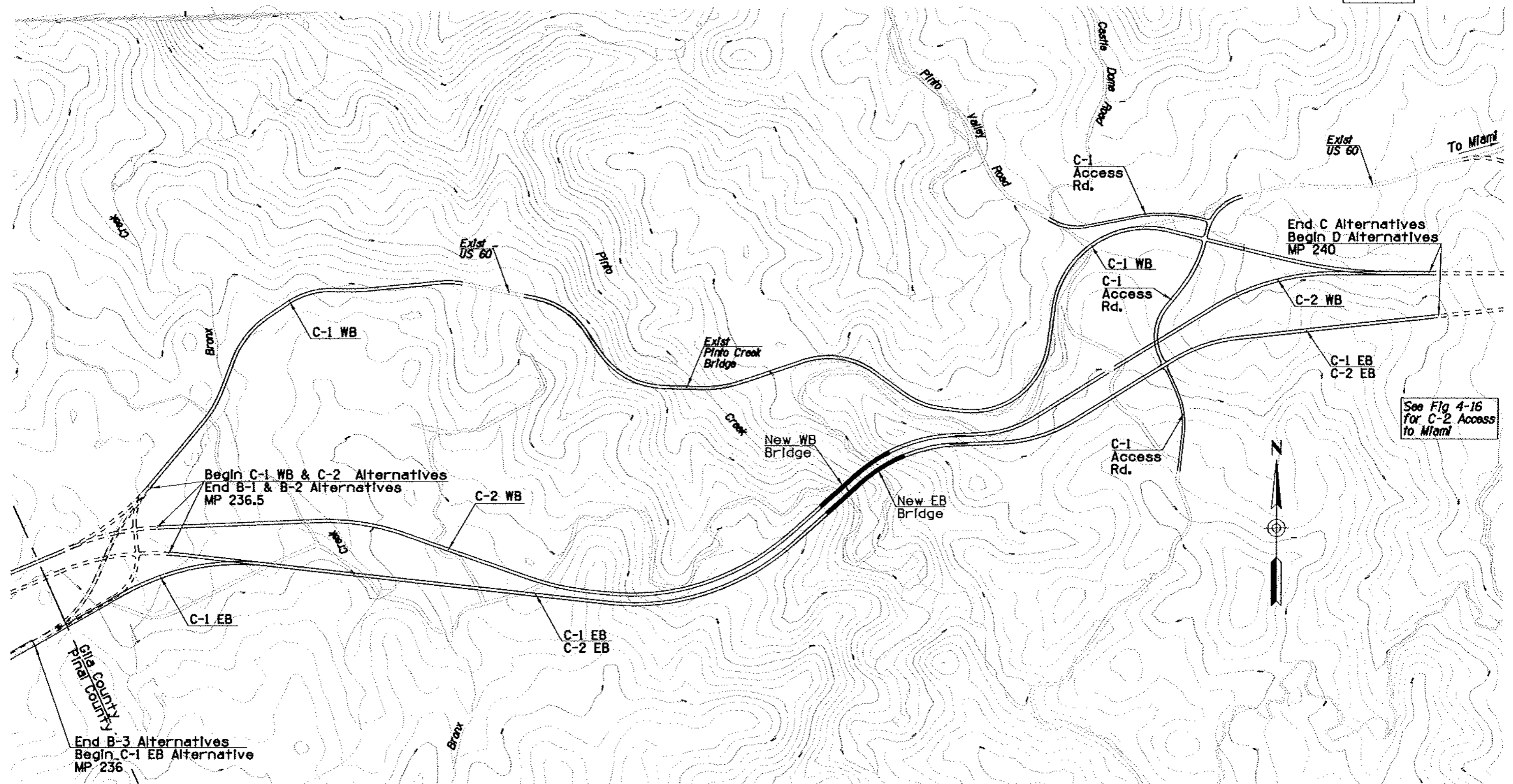


| F.H.R.A. REGION | STATE | PROJECT NO. | SHEET NO. | TOTAL SHEETS | AS BUILT |
|-----------------|-------|-------------|-----------|--------------|----------|
| 9 | ARIZ. | | 47 | | |

60 CI 227



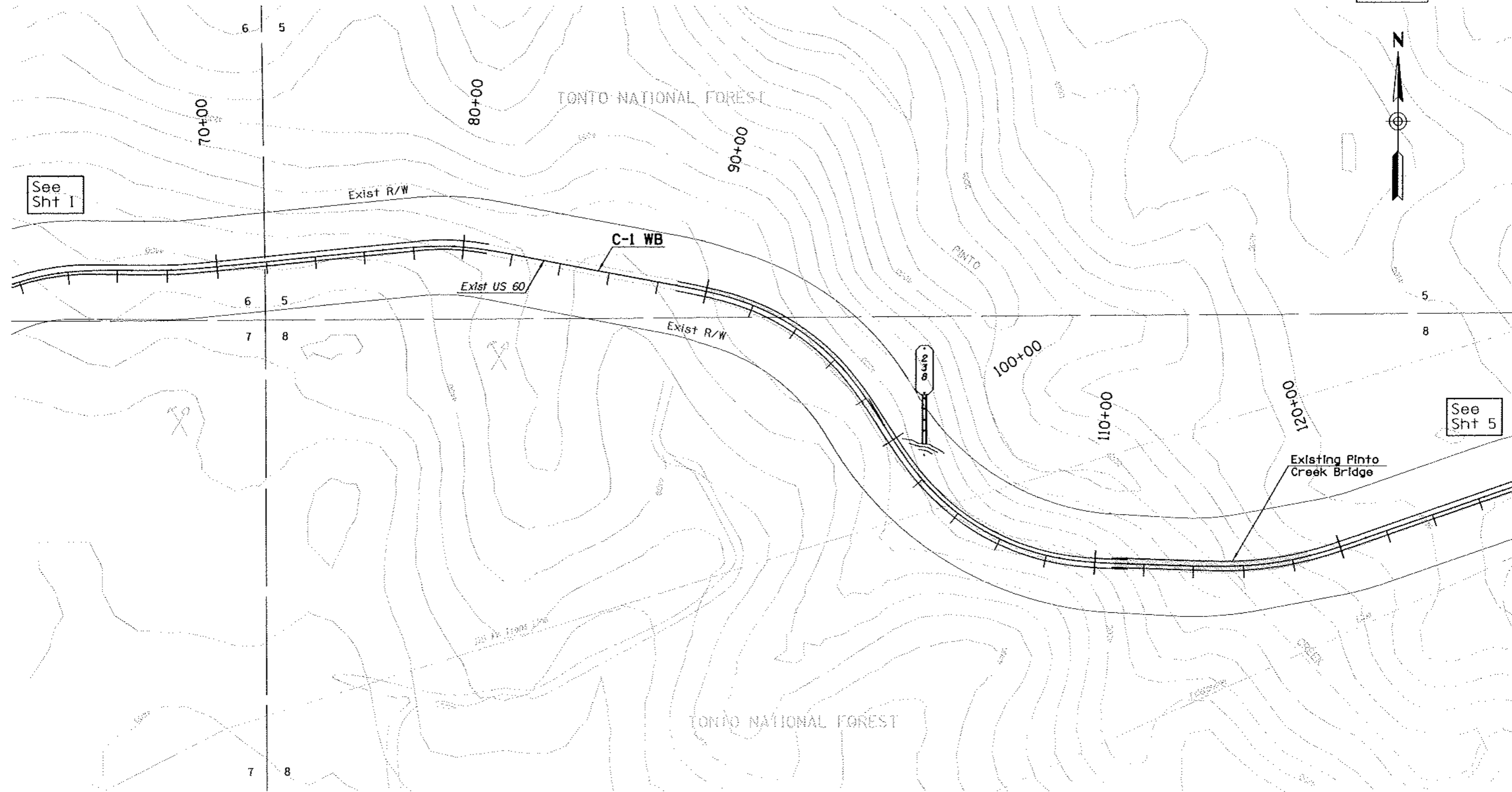
Plotted By: "USEE" Date: 18-July-2004 17:21
 File: F:\24159\3000 US 60 Superior to Globe\700\40\702\CIVIL\702400\segsnctak.dgn

| DATE | LOCATION | REVISIONS |
|------|----------|-----------|
| | | |
| | | |
| | | |
| | | |

| | | | | |
|-----------------------|-------------------|------------------|--|---|
| DESIGN | NAME | DATE | ARIZONA DEPARTMENT OF TRANSPORTATION INTERMODAL TRANSPORTATION DIVISION | PRELIMINARY NOT FOR CONSTRUCTION OR RECORDING |
| DRAWN | JACOBS CIVIL INC. | | SEGMENT C ALTERNATIVES | |
| CHECKED | | | | |
| ROUTE | LOCATION | SUPERIOR - GLOBE | | SHEET 1 OF 1 |
| US 60 | | | | |
| TRACS NO. H 5160 01 L | | | | |

| F.H.R.A. REGION | STATE | PROJECT NO. | SHEET NO. | TOTAL SHEETS | AS BUILT |
|-----------------|-------|-------------|-----------|--------------|----------|
| 9 | ARIZ. | | 19 | | |

60 GI 227



See Sht 1

See Sht 5

For C-1 EB See Sheet 3

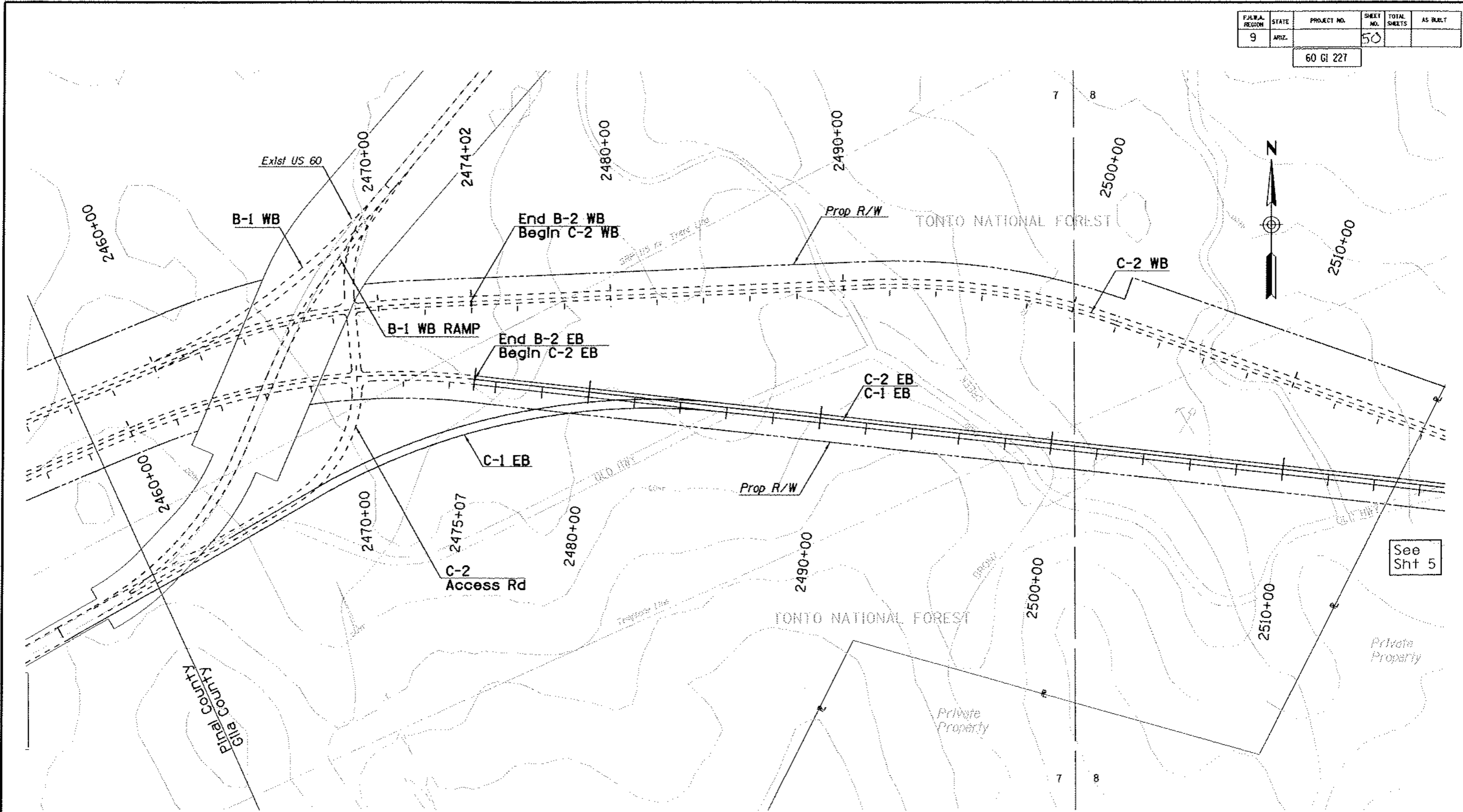
| DATE | REVISIONS | LOCATION |
|------|-----------|----------|
| | | |
| | | |
| | | |

Plotted By: JCS/... Date: 10-NOV-2004 17:24
 Filler: F:\614159\2000 US 60 Superior to Globe\780400\780400\60GI-227.dgn

| | | | | |
|-----------------------|------|------|--|---|
| DESIGN | NAME | DATE | ARIZONA DEPARTMENT OF TRANSPORTATION INTERMODAL TRANSPORTATION DIVISION | PRELIMINARY NOT FOR CONSTRUCTION OR RECORDING |
| DRAWN CHECKED | | | | |
| | | | ALTERNATIVE C-1 | SHEET 2 OF 6 |
| | | | ROUTE: US 60 | |
| TRACS NO. H 5160 01 L | | | | OF |

| F.H.W.A. REGION | STATE | PROJECT NO. | SHEET NO. | TOTAL SHEETS | AS BUILT |
|-----------------|-------|-------------|-----------|--------------|----------|
| 9 | ARIZ. | | 50 | | |

60 GI 227



See Sht 5

For C-1 WB See Sheet 2

| DATE | LOCATION | REVISIONS |
|------|----------|-----------|
| | | |
| | | |
| | | |

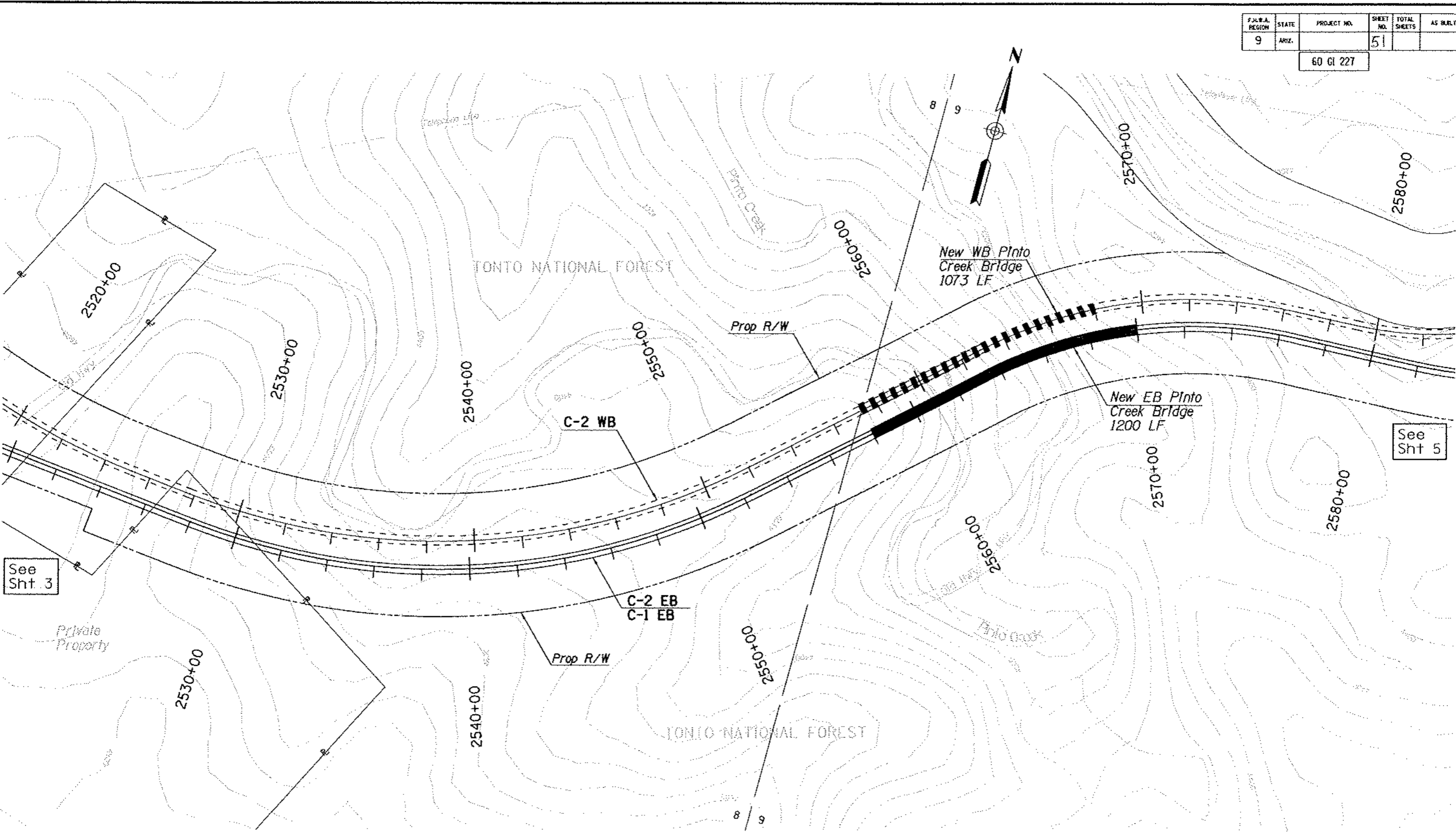
Plotted By: m1555 Date: 10-NOV-2004 17:25
 P.L. P:\14159\3000 US 60 Superior to Globe\788CADD\78221VIL\782A00A\03C2-pl.dgn

| | | | | |
|-----------------------|------|------------------------------|--|---|
| DESIGN | NAME | DATE | ARIZONA DEPARTMENT OF TRANSPORTATION INTERMODAL TRANSPORTATION DIVISION | PRELIMINARY NOT FOR CONSTRUCTION OR RECORDING |
| DRAWN | | | | |
| CHECKED | | | ALTERNATIVE C-1 | SHEET 3 OF 5 |
| ROUTE US 60 | | LOCATION SUPERIOR - GLOBE | | OF |
| TRACS NO. H 5160 01 L | | | | |

PINAL COUNTY
 GILA COUNTY

| F.J.R.A. REGION | STATE | PROJECT NO. | SHEET NO. | TOTAL SHEETS | AS BUILT |
|-----------------|-------|-------------|-----------|--------------|----------|
| 9 | ARIZ. | | 51 | | |

60 GI 227



See Sht. 3

See Sht 5

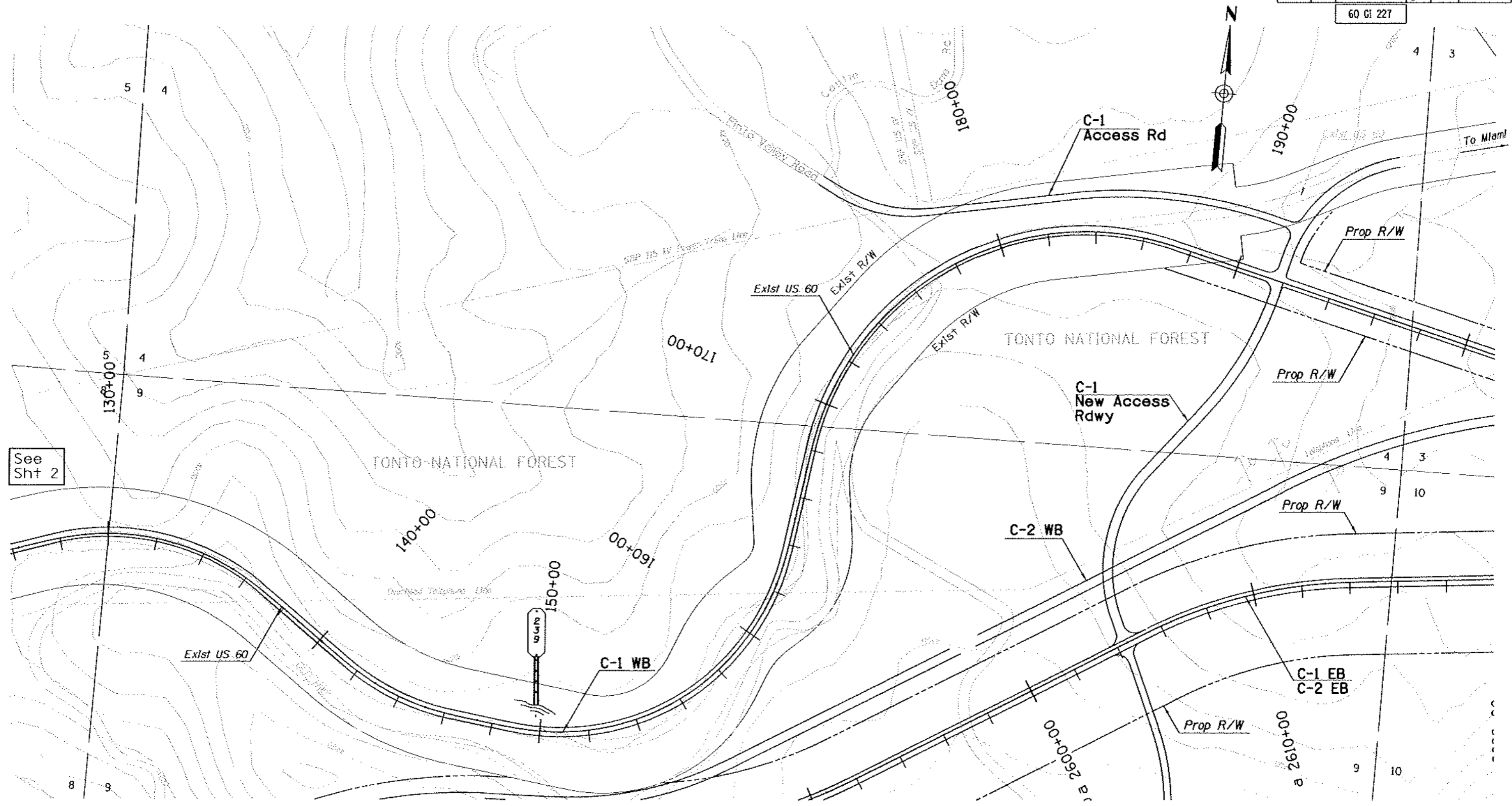
Plotted By: JBER Date: 10-NOV-2004 17:26
 File: P:\0419\3888 US 60 Superior to Globe\780400\7802\CIVIL\782A05N\38C2-A100.dwg

| NO. | REVISIONS | LOCATION | DATE |
|-----|-----------|----------|------|
| | | | |
| | | | |
| | | | |

| | | | | |
|-----------------------|----------|------|--|---|
| DESIGN | NAME | DATE | ARIZONA DEPARTMENT OF TRANSPORTATION INTERMODAL TRANSPORTATION DIVISION | PRELIMINARY NOT FOR CONSTRUCTION OR RECORDING |
| DRAWN | | | | |
| CHECKED | | | ALTERNATIVE C-1 | |
| | | | | |
| ROUTE | LOCATION | | SUPERIOR - GLOBE | SHEET 4 OF 6 |
| US 60 | | | | OF |
| TRACS NO. H 5160 01 L | | | | |

| F.A.R.A. REGION | STATE | PROJECT NO. | SHEET NO. | TOTAL SHEETS | AS BUILT |
|-----------------|-------|-------------|-----------|--------------|----------|
| 9 | ARZ. | | 52 | | |

60 CI 227



See Sht 2

See Sht 4

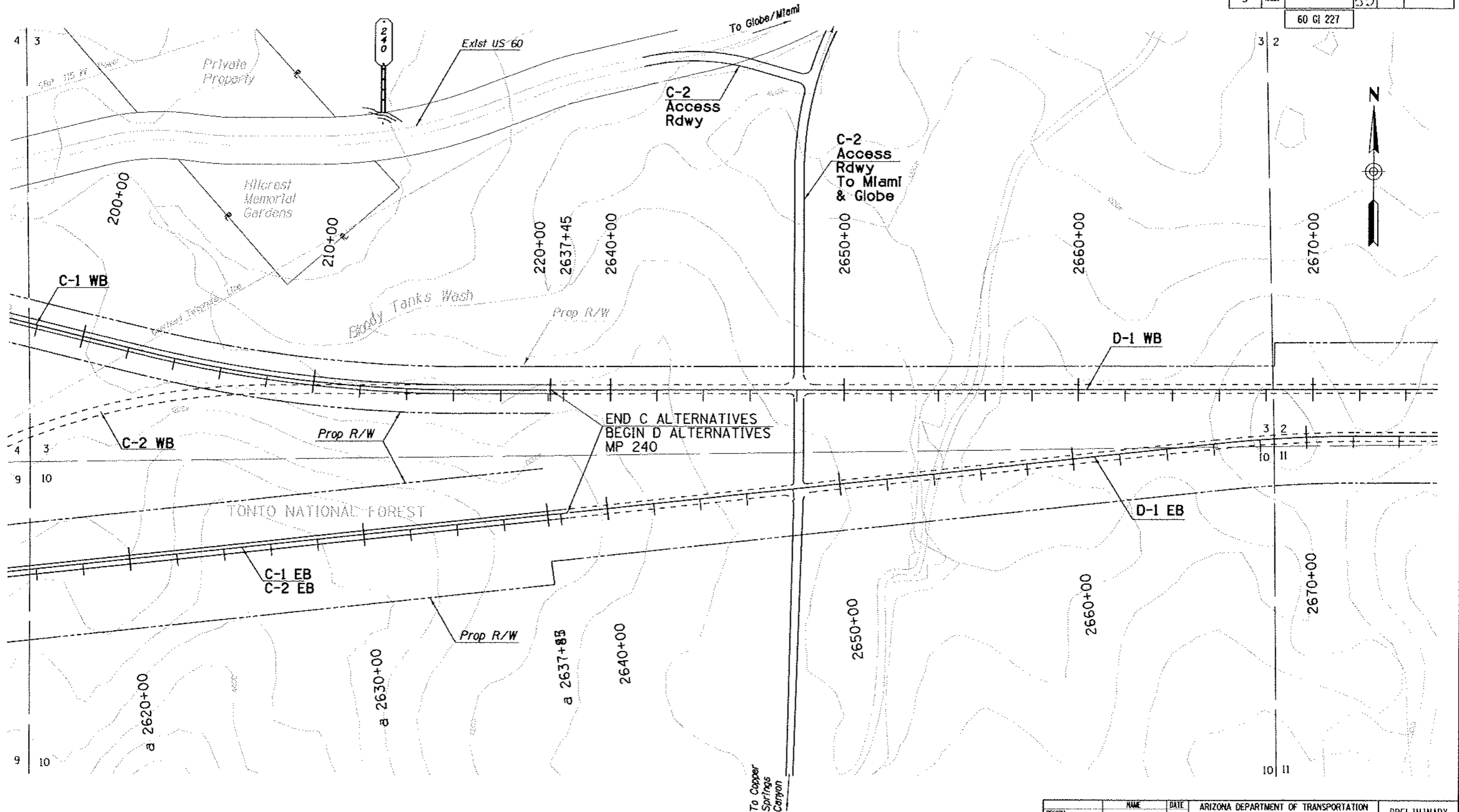
| DATE | LOCATION | REVISIONS | DESIGNED | DRAWN | CHECKED |
|------|----------|-----------|----------|-------|---------|
| | | | | | |

Plotted By: 4/25/04 Date: 12/10/2004 17:27
 File: P:\04159\3000 US 60 Superior to Globe\60CI227\CIVIL\702650\13001-13010.dwg

| | | | | |
|---------|----------|-----------------------|--|---|
| DESIGN | NAME | DATE | ARIZONA DEPARTMENT OF TRANSPORTATION INTERMODAL TRANSPORTATION DIVISION | PRELIMINARY NOT FOR CONSTRUCTION OR RECORDING |
| DRAWN | | | | |
| CHECKED | | | ALTERNATIVE C-1 | |
| ROUTE | LOCATION | SUPERIOR - GLOBE | | SHEET 5 OF 6 |
| US 60 | | TRACS NO. H 5160 01 L | | OF |

| F.H.R.A. REGION | STATE | PROJECT NO. | SHEET NO. | TOTAL SHEETS | AS BUILT |
|-----------------|-------|-------------|-----------|--------------|----------|
| 9 | ARIZ. | | 53 | | |

60 GI 227



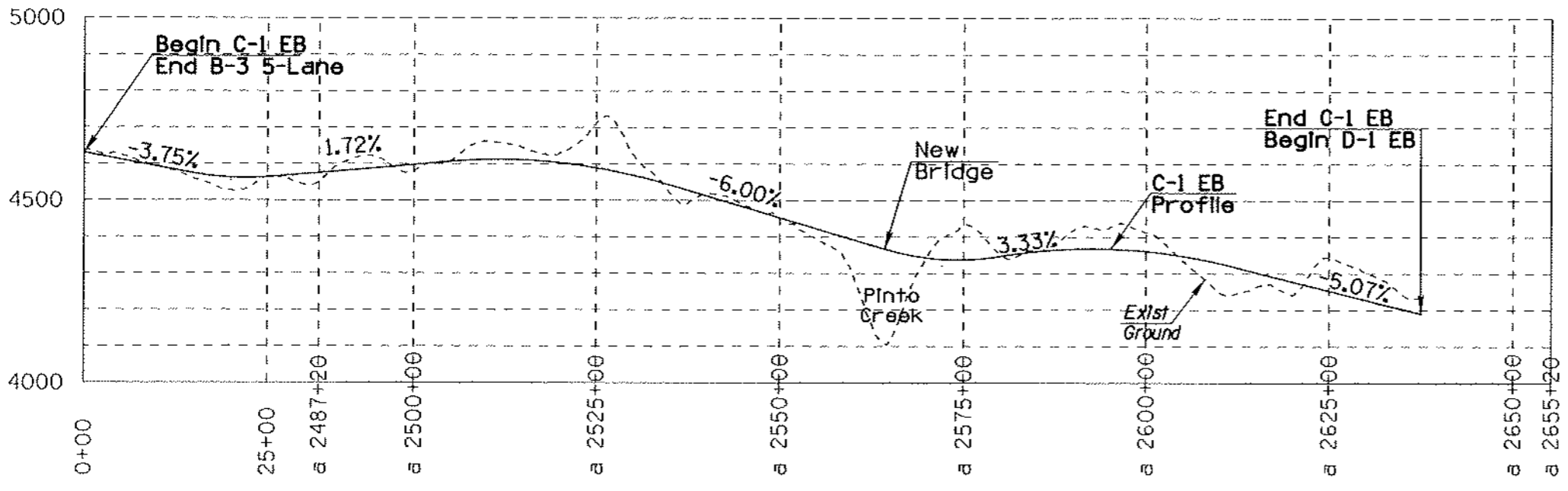
Plotted By: JES/BJ/10/15/2008 17:28
 File: P:\04195\3008 US 60 Superior to Globe\0400\2008\0400\0400\0400\0400.dwg

| NO. | REVISIONS | LOCATION | DATE |
|-----|-----------|----------|------|
| | | | |
| | | | |
| | | | |

| | | | | |
|-----------------------|------------------|------|--|---|
| DESIGN | NAME | DATE | ARIZONA DEPARTMENT OF TRANSPORTATION INTERMODAL TRANSPORTATION DIVISION | PRELIMINARY NOT FOR CONSTRUCTION OR RECORDING |
| DRAWN | | | | |
| CHECKED | | | DESIGN ALTERNATIVE C-1 | |
| | | | | |
| ROUTE | LOCATION | | | SHEET 6 OF 6 |
| US 60 | SUPERIOR - GLOBE | | | |
| TRACS NO. H 5160 01 L | | | | OF |

| F.H.W.A. REGION | STATE | PROJECT NO. | SHEET NO. | TOTAL SHEETS | AS BUILT |
|-----------------|-------|-------------|-----------|--------------|----------|
| 9 | ARZ. | | 54 | | |

60 GI 227



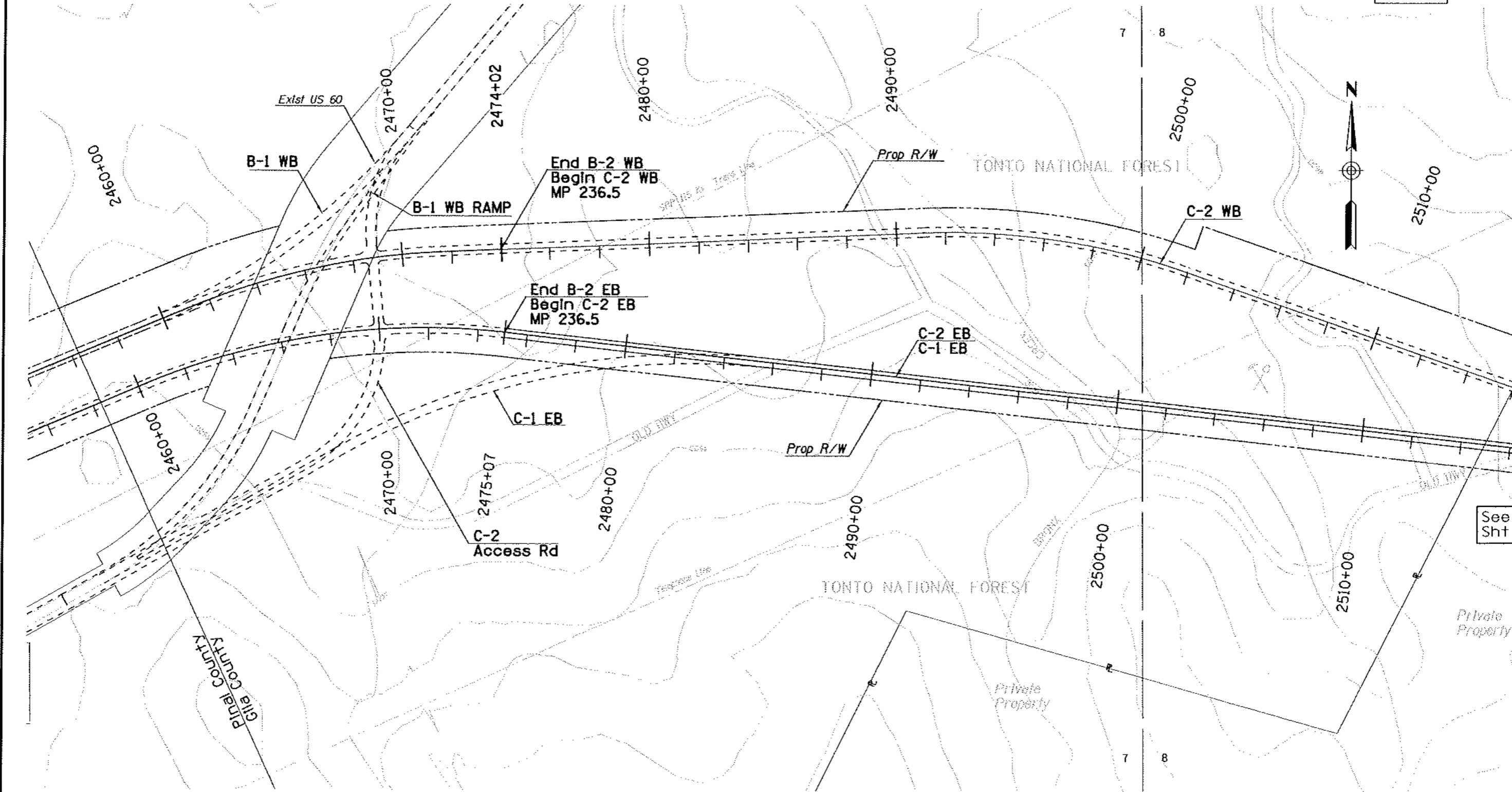
Plotted By: w195511 Date: 18-MAY-2004 17:25
 File: P:\04\99\3000 US 60 Superior to Globe\7805400\10221\1\782400\Figure4-17C-1.dgn

| DATE | REVISIONS | LOCATOR |
|------|-----------|---------|
| | | |
| | | |
| | | |

| | | | | |
|-----------------------|------------------|------|--|---|
| DESIGN | NAME | DATE | ARIZONA DEPARTMENT OF TRANSPORTATION INTERMODAL TRANSPORTATION DIVISION | PRELIMINARY NOT FOR CONSTRUCTION OR RECORDING |
| DRAWN | | | | |
| CHECKED | | | ALTERNATIVE C-1 MAJOR VERTICAL FEATURES | SHEET 1 OF 1 |
| ROUTE | LOCATION | | | |
| US 60 | SUPERIOR - GLOBE | | | |
| TRACS NO. H 5160 01 L | | | | OF |

| F.A.R.A. REGION | STATE | PROJECT NO. | SHEET NO. | TOTAL SHEETS | AS BUILT |
|-----------------|-------|-------------|-----------|--------------|----------|
| 9 | ARIZ. | | 55 | | |

60 GI 227



Plotted By: JSE/... Date: 10-10-2004 17:31
 File: P:\01465\3808 US 60 Superior to Globe\7802400N\62C2-h.dwg

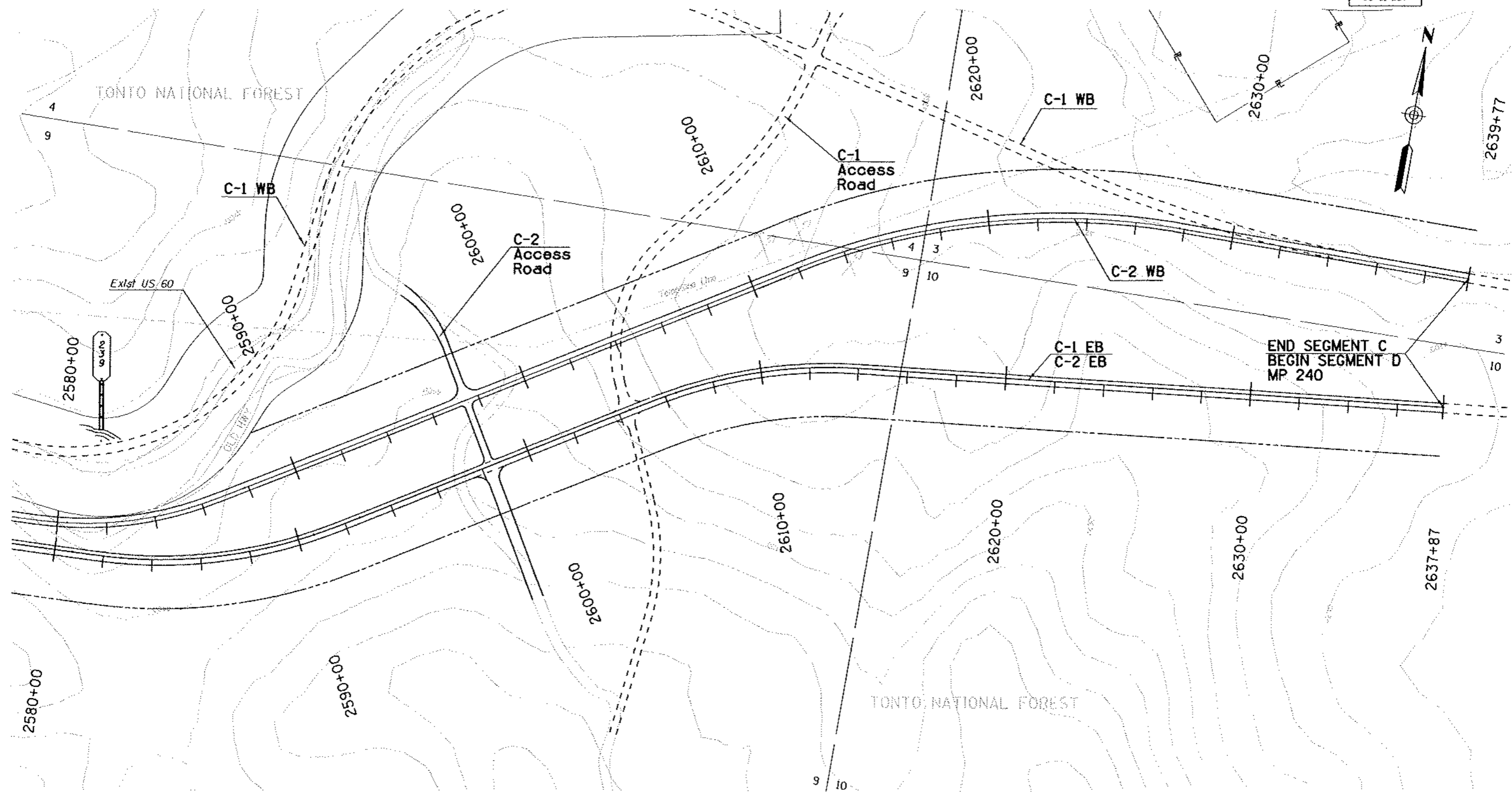
| NO. | REVISIONS | LOCATION | DATE |
|-----|-----------|----------|------|
| | | | |
| | | | |
| | | | |

See Sht 2

| | | | | |
|-----------------------|------|------------------|--|---|
| DESIGN | NAME | DATE | ARIZONA DEPARTMENT OF TRANSPORTATION INTERMODAL TRANSPORTATION DIVISION | PRELIMINARY NOT FOR CONSTRUCTION OR RECORDING |
| DRAWN | | | | |
| CHECKED | | | ALTERNATIVE C-2 | |
| ROUTE | | LOCATION | | SHEET 1 OF 3 |
| US 60 | | SUPERIOR - GLOBE | | |
| TRACS NO. H 5160 01 L | | | | OF |

| F.H.W.A. REGION | STATE | PROJECT NO. | SHEET NO. | TOTAL SHEETS | AS BUILT |
|-----------------|-------|-------------|-----------|--------------|----------|
| 9 | ARIZ. | | 57 | | |

60 GI 227



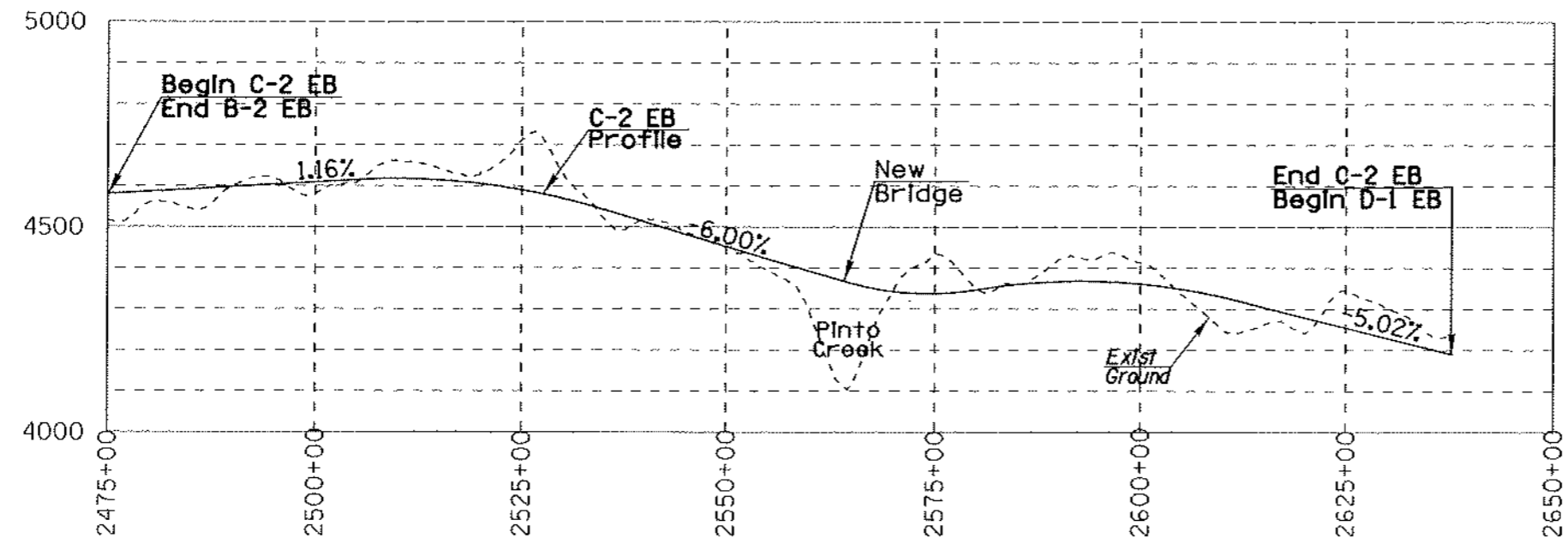
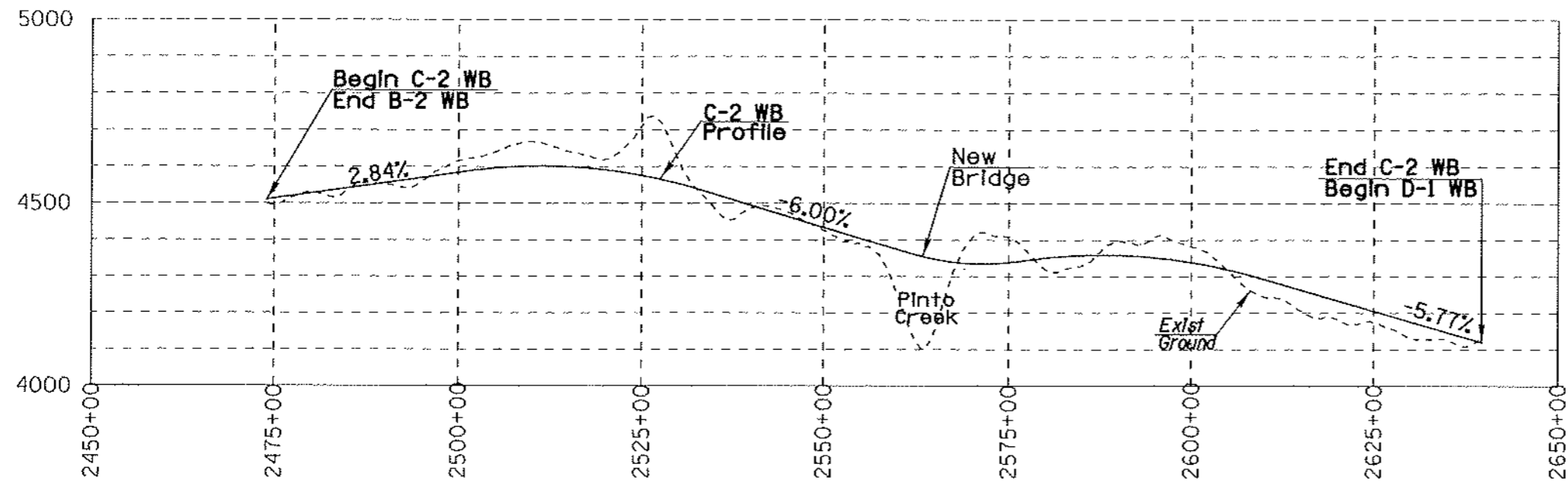
Plotted By: JES/RS Date: 10-10-2004 17:33
 File: P:\014159\3000 US 60 Superior to Globe\700\CIVIL\702\60GI\3-02-H.RD.dgn

| DATE | LOCATION | REVISIONS |
|------|----------|-----------|
| | | |
| | | |

| | | | | |
|-----------------------|------|------|--|---|
| DESIGN DRAWN CHECKED | NAME | DATE | ARIZONA DEPARTMENT OF TRANSPORTATION INTERMODAL TRANSPORTATION DIVISION | PRELIMINARY NOT FOR CONSTRUCTION OR RECORDING |
| | | | ALTERNATIVE C-2 | SHEET 3 OF 3 |
| | | | ROUTE: US 60 LOCATION: SUPERIOR - GLOBE | |
| TRACS NO. H 5160 01 L | | | | OF |

| F.A.R.A. REGION | STATE | PROJECT NO. | SHEET NO. | TOTAL SHEETS | AS BUILT |
|-----------------|-------|-------------|-----------|--------------|----------|
| 9 | ARIZ. | | 58 | | |

60 GI 227



Plotted By: JUSER Date: 16-NOV-2004 17:34
 File: P:\011651\3000 US 60 Superior to Globe\7000\00\702\CIVIL\702\00\K\Fig\ref-19c-2.dgn

| SHEET NO. | FINISHED PLANS | REVISIONS | LOCATION | DATE |
|-----------|----------------|-----------|----------|------|
| | | | | |

| | | | | |
|-----------------------|----------|------|--|---|
| DESIGN | NAME | DATE | ARIZONA DEPARTMENT OF TRANSPORTATION INTERMODAL TRANSPORTATION DIVISION | PRELIMINARY NOT FOR CONSTRUCTION OR RECORDING |
| DRAWN | | | | |
| CHECKED | | | ALTERNATIVE C-2 MAJOR VERTICAL FEATURES | |
| ROUTE | LOCATION | | US 60 SUPERIOR - GLOBE | SHEET 1 OF 1 |
| TRACS NO. H 5160 01 L | | | | OF |