

Subprogram Scheduling Process Recommendations

Development/Operations Partnering

June 21, 2006

Presenter: Mike Manthey



Dev/Ops Charter

***To improve the Subprogram
Project Development Process
with an emphasis on Scheduling
to assist in Internal Resource
Management***

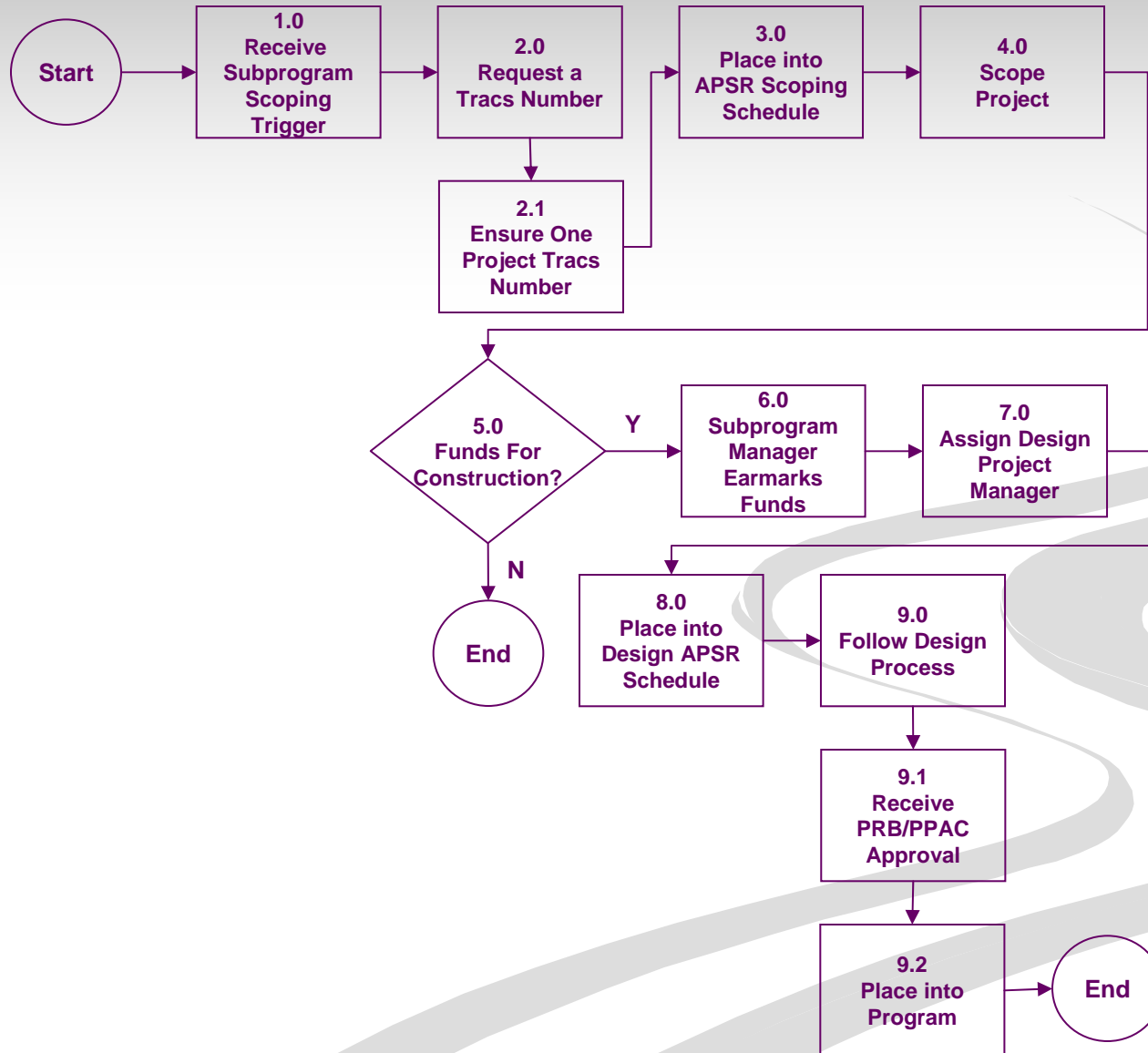
The Members

- Mike Manthey
- Arnold Burnham
- John Carr
- Dave Duffy
- Tammy Flaitz
- Hari Khana
- Vince Li
- Bob Miller
- Sabra Mousavi
- Rick Powers
- Bruce Vana

Initial Target

- Review of subprograms determined that some could make early schedule public now
- Purpose would be *Internal Resource Management*

Subprogram Scheduling Process



Potential Benefits

- APSR schedule communication in Scoping phase would provide information to the Development team to ready resources to handle the projects in their normal cycle time
- Having the subprogram project in the schedule would require Project Managers to better define the total needs for the project

Potential Concerns

- Formal placement into the program makes project tracking public and susceptible to undue pressure
- Limits flexibility – one of the key reasons subprograms were created

Survey Findings

- One size doesn't fit all
- Some subprograms are reactive; some can be very proactive
- There are many that can look forward and can schedule early

Recommendation

Some subprograms should use the process in place to initiate the project in predesign or design

- Should use the APSR to track the project's progress

Early scheduling needs to occur so that internal resource management can be optimized

- Whether one year or three years out, the subprograms should follow the Project Development Process and provide an early schedule

Current Traffic Projects in APSR



Active Project Status Report - Scoping

Route	County	B MP	TRACS	District	DesignPM	Location	Type of Work
17	Maricopa	201.7	H6349 01C	Phoenix (Const)	Traffic Design	I 17 RR Tracks to I 10 TI	Converting option lane into dedicated I 17 SB thru-lane onto WB & EB I 10
66	Mohave	61.8	H6752 01C	Kingman	Arif Kazmi	Industrial - Kingman Airport Intersection	Reconstruct SR66 left - turn lanes and modification of signal. Possible EB 66 right turn lane reconstruct.
88	Maricopa	203.4	H7005 01D	Phoenix (Const)	Richard Weeks	Apache Junction to Canyon Lake	Spot Safety Improvements at Nine Locations.



Active Project Status Report - Design

Route	County	B MP	TRACS	Design PM	Location	Type of Work	Comments	Project Cost (\$000)	Bid Ready Date
40	CN	161	HX184 01C	KAMAL	Various Locations	Replace Existing Signal	Project Added By The PRB	\$408	TBD FY 07
88	PN	195	HX181 01C	Tortice	SR 88 @ 16th Ave.	Construct Traffic Signal	Project Added By The PRB	\$536	TBD FY 07