

Statewide and Regional Transportation Planning Framework Process and Investment Strategy

May 28, 2008

Victor Mendez, P.E.

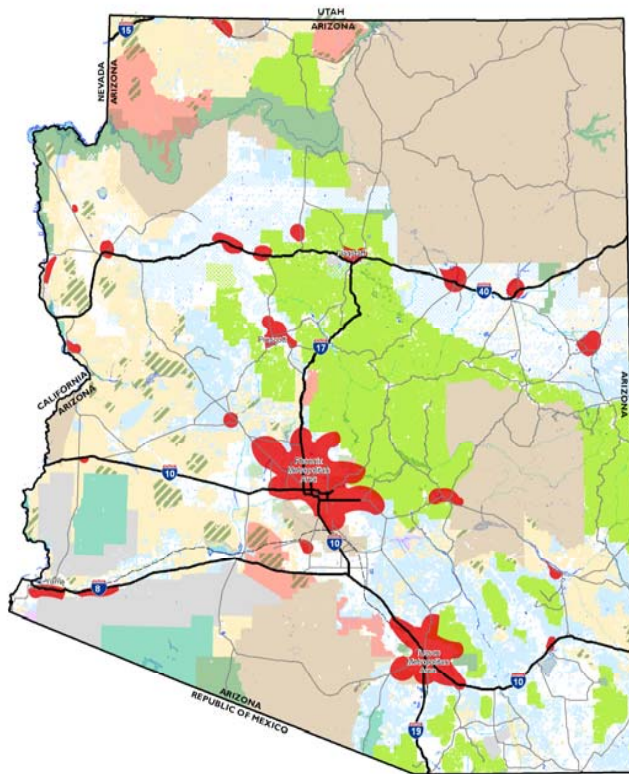
Arizona's Transportation Future

- Challenges
 - Continued Urban Growth
 - Mobility and Connectivity
 - Congestion and Environmental Impact
- Needs
 - Expanded Transportation Networks
 - Diversity of Modal Choice
 - Diversity and Sustainability of Funding Support
- Potential Solution
 - New Investment Strategy tied to Smart Growth at the State, Regional and Local Levels

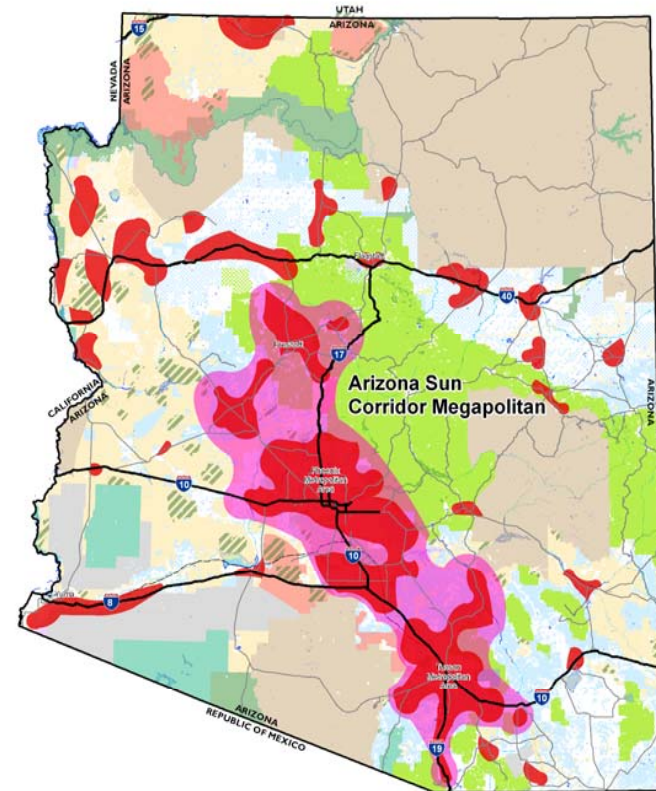


Arizona's Future

POTENTIAL STATEWIDE GROWTH



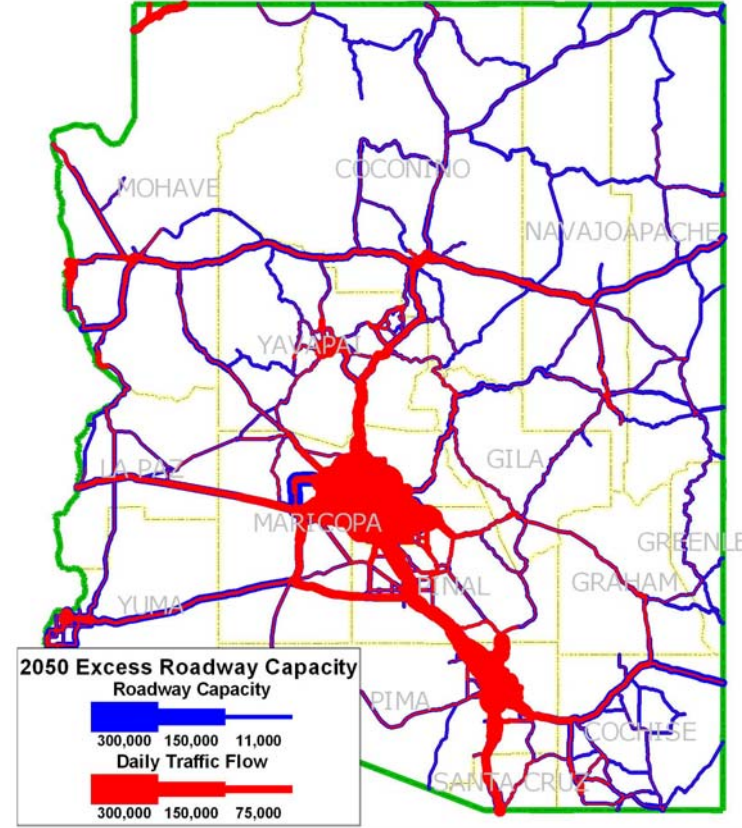
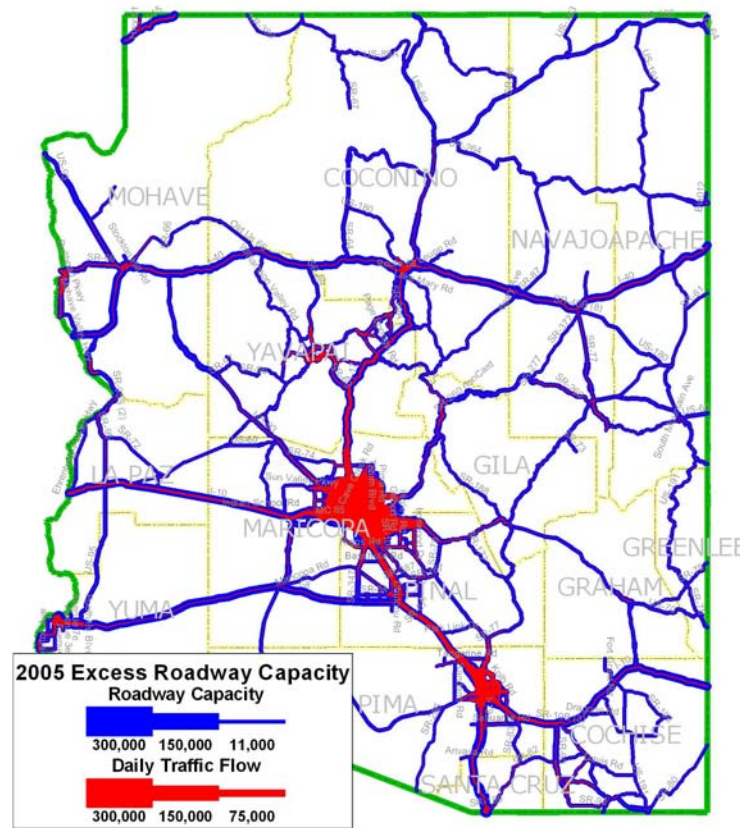
2005 Growth Areas
Population: 5.1 million



2050 Growth Areas
Population: 14.1 million



Projected Statewide Travel Demand



A Multi-Pronged Approach

- Regional Frameworks
- Statewide Framework
- Critical Needs
(Executive Order
2008-02)



Progress to Date

- Completing Existing Conditions, Environmental Scan and Issues Identification Phase
- Regular Communication with COGs and MPOs
- More than 120 Stakeholder Interviews Statewide Complete
- 12 Community Workshops and Dozens of Focus Groups coming up in Late March
- Committee Structure Engaging Regional And Local Elected Officials And Staff
- Project Website at www.bqaz.gov

Preliminary Critical Needs Definition

- Total Identified Needs Statewide \$165 B
 - Statewide High Capacity Roadway Projects \$110 B
 - Public Transit/Rail Projects and Programs \$ 25 B
 - Local Transportation Improvements \$ 30 B
- No Single Finance Mechanism Will Address All
- Portion of Program Must go to Cities, Towns and Counties and Tribal Communities



Recommended Statewide Investment Strategy

Strategic Highway Projects*	58%	\$24.698 B
Strategic Rail and Transit Projects and Programs	18%	\$ 7.665 B
Local Mobility Projects and Programs	20%	\$ 8.517 B
Transportation Enhancement and Walkable/Bikeable Communities	4%	\$ 1.703 B

TOTAL: 100% \$42.583 B

* Includes 3% Environmental Conservation Fund

Strategic Highway Projects

- Interstate Highways – capacity, safety and access improvements
- State Highways – capacity, safety and access improvements
- New state and regional highway corridors
- Acceleration of programmed projects
- Public Private Partnerships
 - Leverage private investment in new corridors



Conservation/Environmental Mitigation Fund

- Ensuring Wildlife Movement Connectivity
- Biological Habitat Preservation
- Preservation of Visual and Scenic Resources



Strategic Rail and Transit Projects and Programs

- Public Transit Projects and Programs
- Commuter Rail
- High Speed Intercity Rail
- Light Rail and Modern Streetcar Extensions



Local Mobility Projects and Programs

- Local Improvements Could Include:
 - Pedestrian Facilities
 - Bicycle Facilities
 - Local Transit Services
 - Regional Rail Services
 - Roadways
- Prioritization of Local Improvements Will be Done by Local Communities



Transportation Enhancements and Walkable/Bikeable Communities

- Stimulation of Transit Oriented Development
- Revitalization of Downtown Areas
- Pedestrian-friendly Urban Areas
- Create a Sense of Place



Thank You