

APPENDIX G: Meeting Materials Presentation Boards

PURPOSE OF TODAY'S MEETING

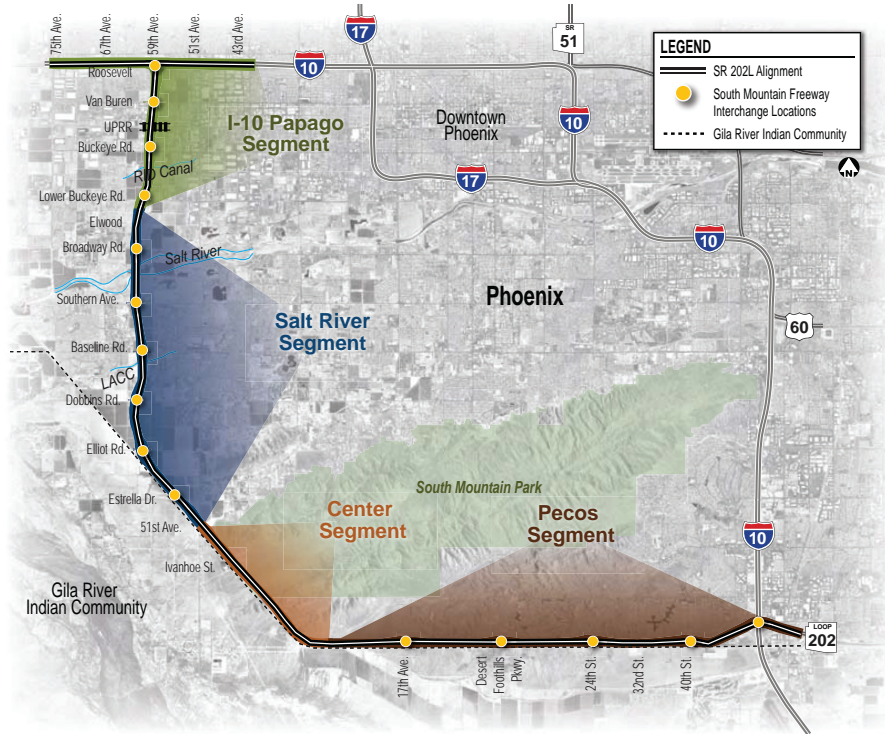
- To obtain public input on preliminary design plans for the Loop 202 (South Mountain Freeway) Project
- Not to debate project alignment and “build or no build” options finalized during environmental phase

AGENDA

- 6 - 6:30 p.m.** Visit information stations and speak one-on-one with project representatives
- 6:30 - 7:30 p.m.** Formal presentation followed by brief Q&A
- 7:30 - 8 p.m.** Visit information stations and speak one-on-one with project representatives

YOUR INPUT IS IMPORTANT TO US!

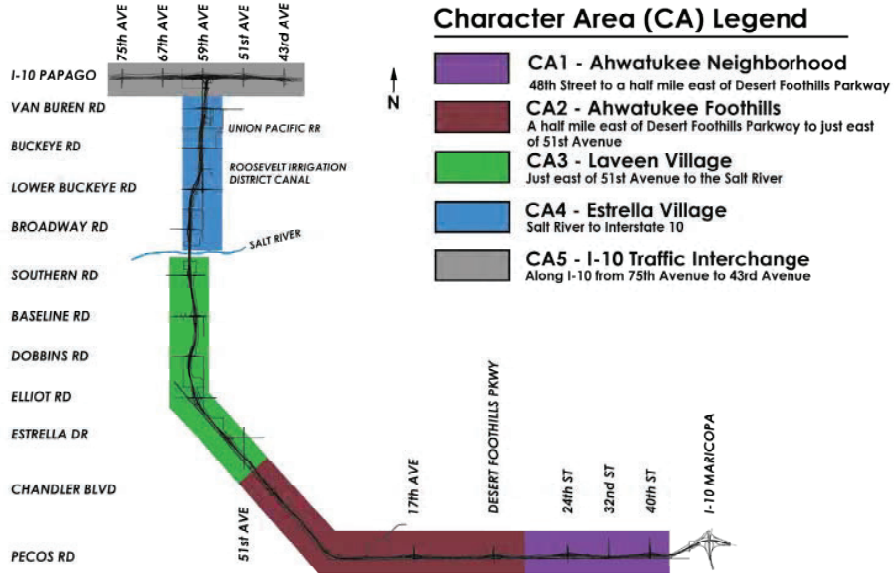
- **Submit your comments at today's meeting**
 - Speak to project representatives in person
 - Write your comments on the forms provided and hand them to a project team member
- **Send us your comments**
 - Email: southmountainfreewayinfo@c202p.com
 - Project website: southmountainfreeway.com
- **Mail your comments to us at the following address**
 - South Mountain Freeway Project Team; 411 N. Roosevelt Ave.
Chandler, AZ 85226
- **Call us at the project hotline:**
 - 1.855.SMF.L202 (1.855.SMF.L202) / Para español: 623.239.4558



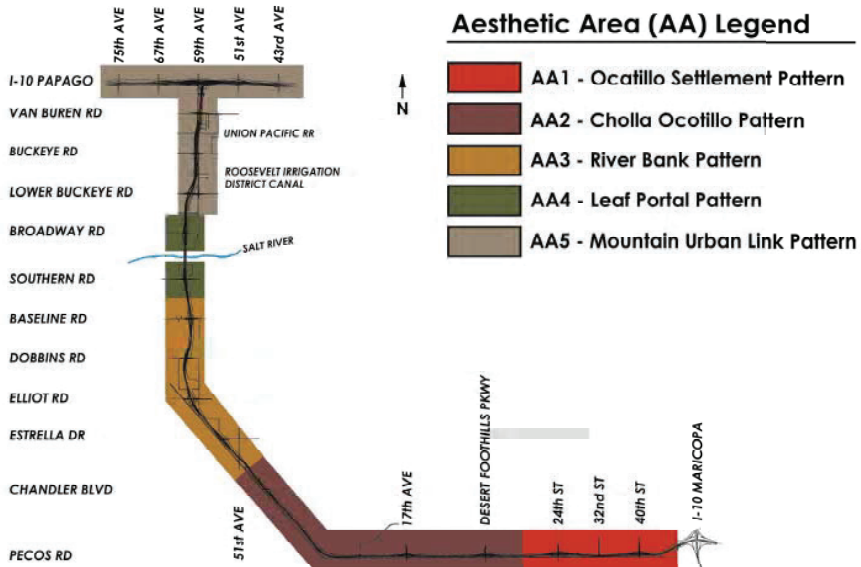
	2016				2017				2018				2019				
	WINTER	SPRING	SUMMER	FALL	WINTER	SPRING	SUMMER	FALL	WINTER	SPRING	SUMMER	FALL	WINTER	SPRING	SUMMER	FALL	
PROJECT SCHEDULE OVERVIEW																	
Design Phase and Preconstruction Activities	[Yellow bar spanning Winter 2016 to Summer 2018]																
Utility Relocation		[Yellow bar spanning Spring 2016 to Summer 2017]															
Construction Phase*		[Yellow bar spanning Spring 2016 to Summer 2019]															
PUBLIC INVOLVEMENT OPPORTUNITIES*																	
Public Meetings to Obtain Input on Preliminary Design Plans			[Yellow box: Pecos, Salt River and I-10 Segments]			[Yellow box: Center Segment]											
Public Meetings to Share Final Plans, Present Construction Information and Introduce Construction Managers			[Yellow box: Pecos, Salt River and I-10 Segments]						[Yellow box: Center Segment]								

*Notes:
 1. Preliminary Schedule. Subject to Change.
 2. Due to the nature of the design-build project delivery method being used for the South Mountain Freeway Project and the fact that it is a 22-mile project, construction activities will occur in multiple locations within each construction segment during the construction phase.

Five Different Character Areas for Landscape Architectural Design



Five Unique Aesthetic Areas



Landscape and Aesthetics

Noise

Right-of-Way

Diverging Diamond Interchange

ADOT Title VI Notice

**APPENDIX H:
Preliminary Design
Public Input Meetings Presentation**