

US 93: Tegner St to Wickenburg Ranch Way Presentation

May 11, 2023

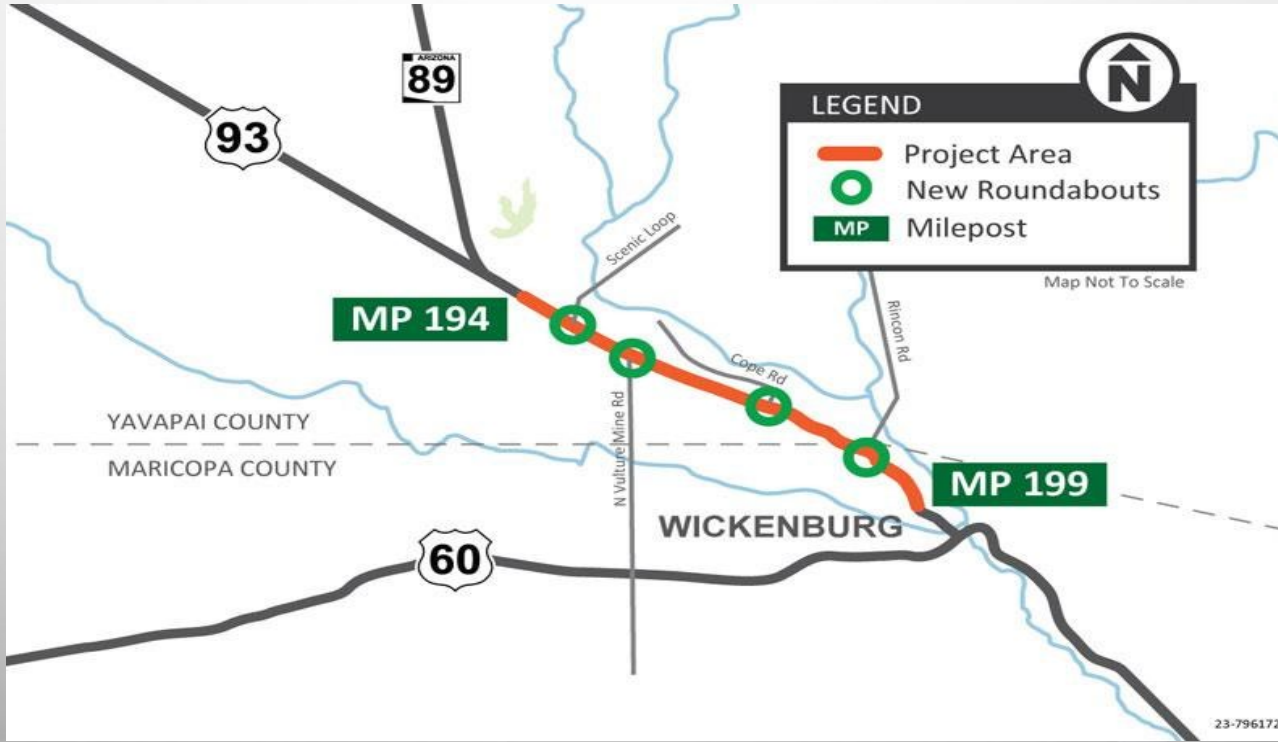
Andrew Roth, Assistant Northwest District Engineer

Bill Sloan, Project Resident Engineer

Jerry McCoy, Community Relations Supervisor

Nicole Underwood, Community Relations
Project Manager, Northwest District

US 93: Tegner St to Wickenburg Ranch Way



Project Elements:

- ❖ Widen US 93 to two lanes in each direction.
- ❖ Construct raised center medians.
- ❖ Install frontage roads.
- ❖ Construct new roundabouts at Rincon, Cope, Vulture Mine and Scenic Loop roads.
- ❖ Install drainage systems, lighting, signing and striping, landscaping and erosion control, traffic control and other related work.

- **What to Expect During Construction**

- ❖ Overnight lane restrictions from 7 p.m. to 6 a.m.
- ❖ Sunday evenings through Friday mornings.
- ❖ No traffic restrictions are planned during the day, weekends, holidays or large special events.
- ❖ Construction is expected to take about two years to complete.
- ❖ Traffic shifts as the new lanes are constructed.

Schedules subject to change because of weather or other unforeseen factors.

New frontage roads & roundabouts



- **Frontage Roads**

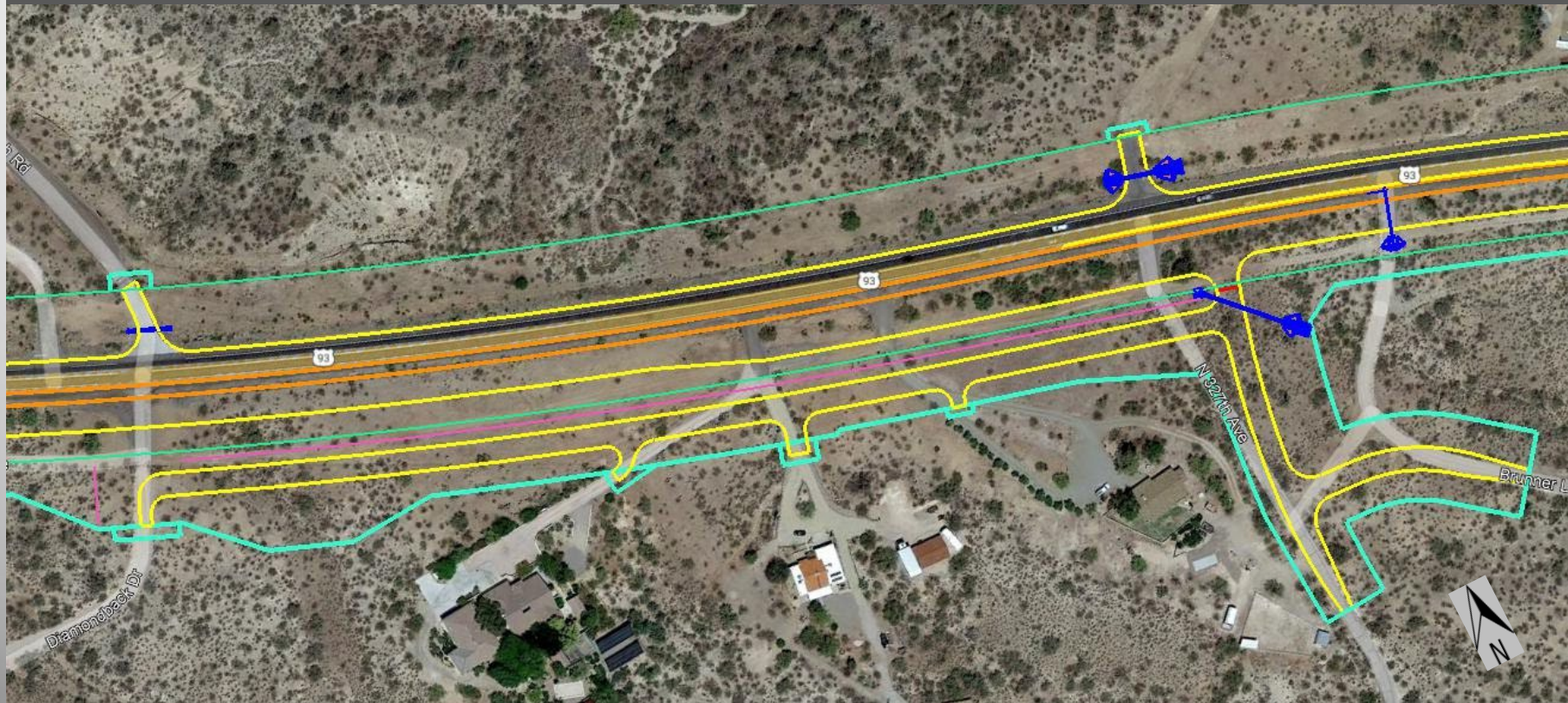
- ❖ Scenic Loop Road - Vulture Mine Road
- ❖ Diamondback Drive - 327th Avenue

- **Roundabouts**

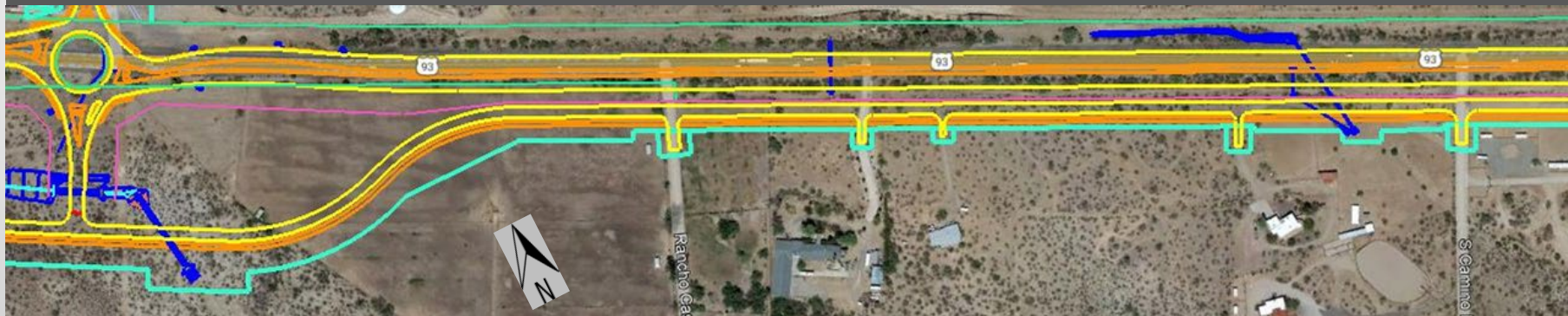
- ❖ Rincon Road
- ❖ Cope Road
- ❖ Vulture Mine Road
- ❖ Scenic Loop Road



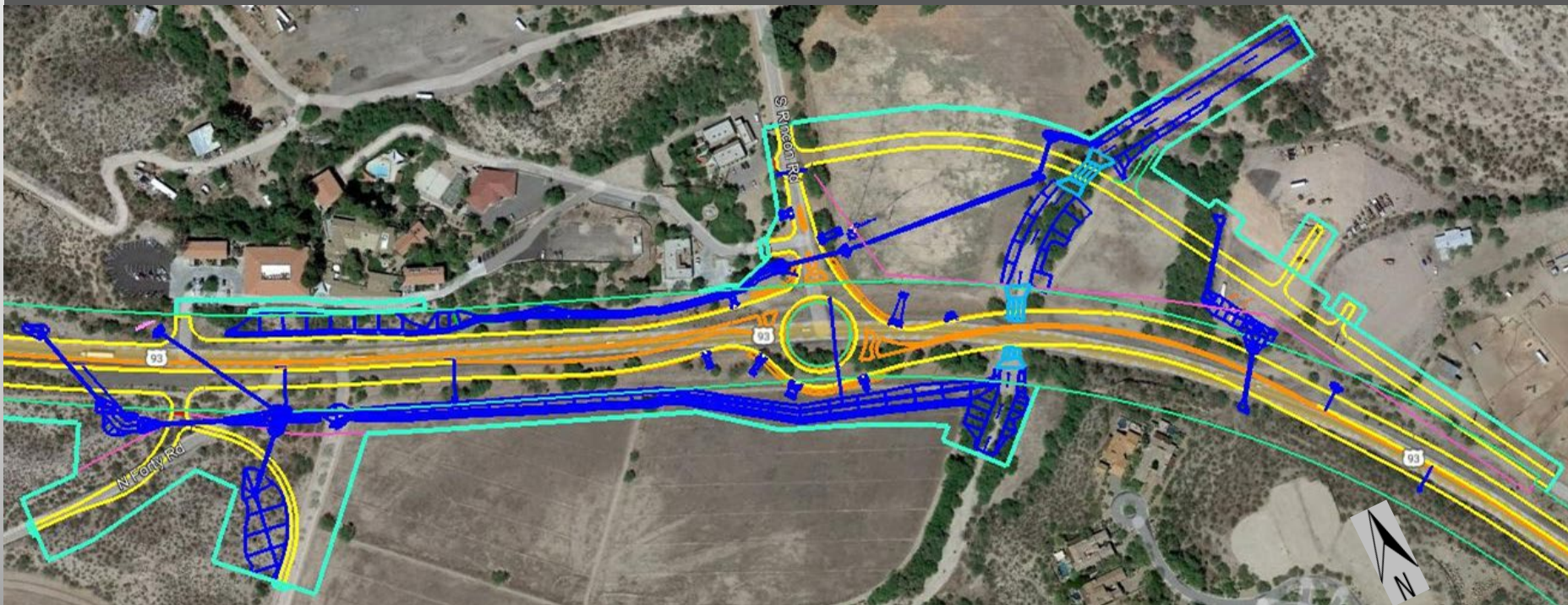
FRONTAGE ROAD: Diamondback Dr To N 327th Ave

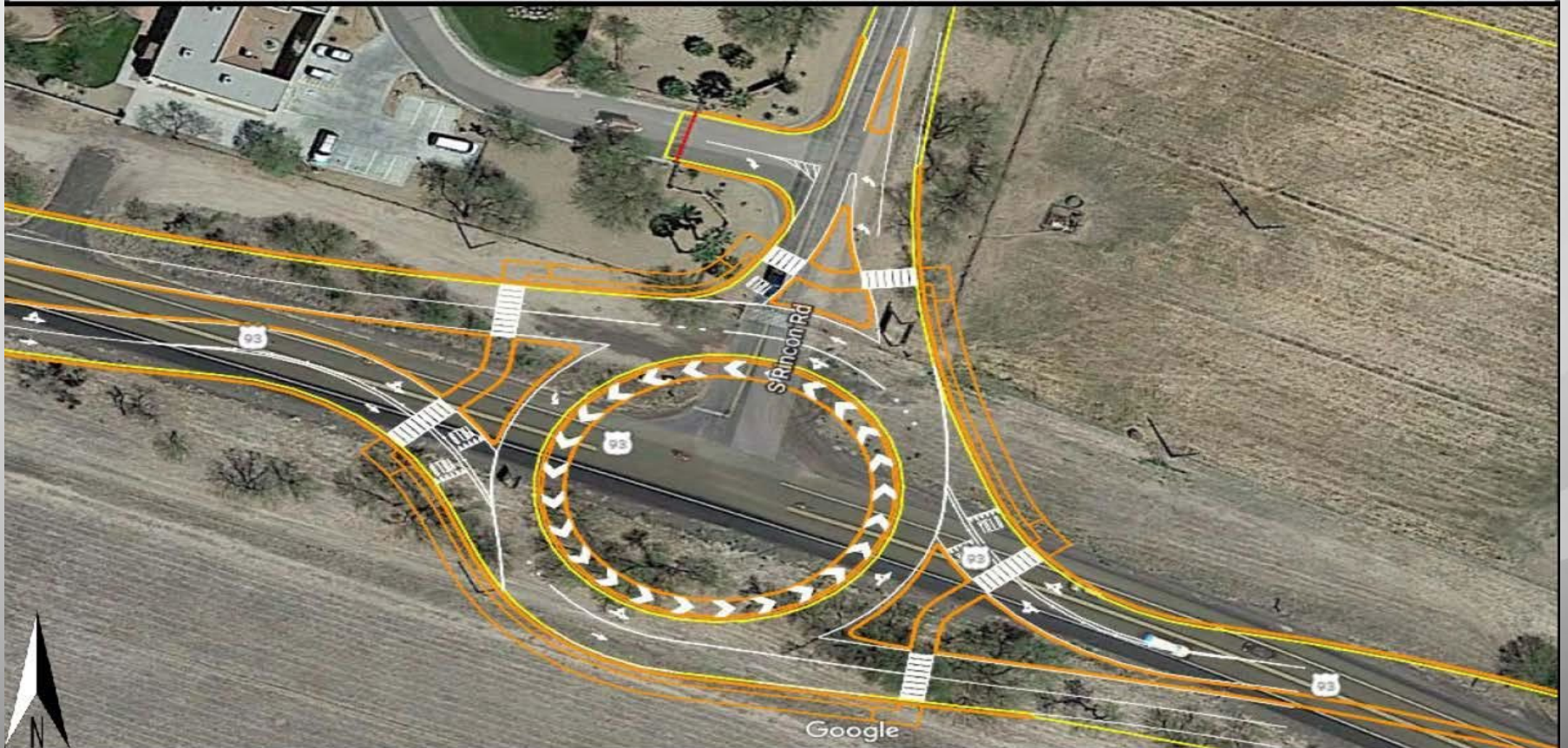


FRONTAGE ROAD: Scenic Loop Rd To Vulture Mine Rd

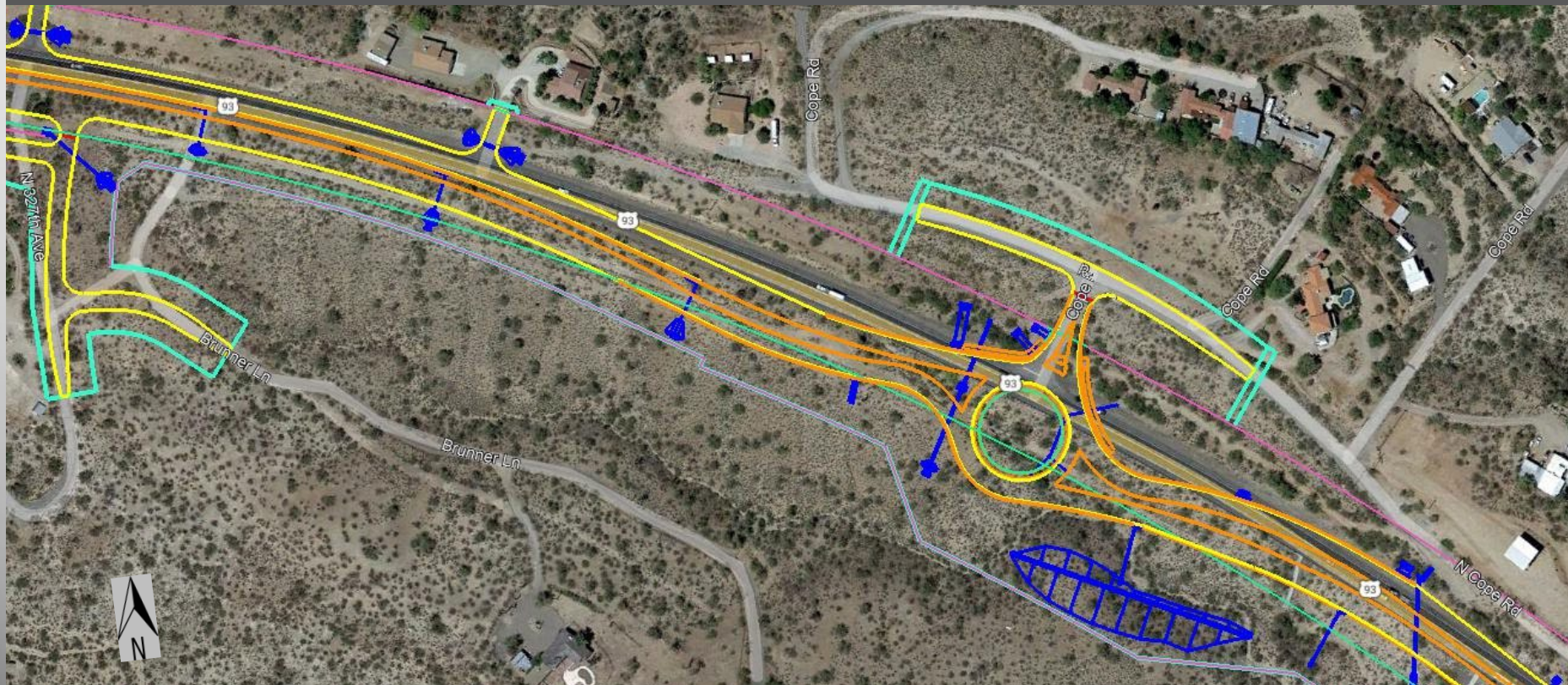


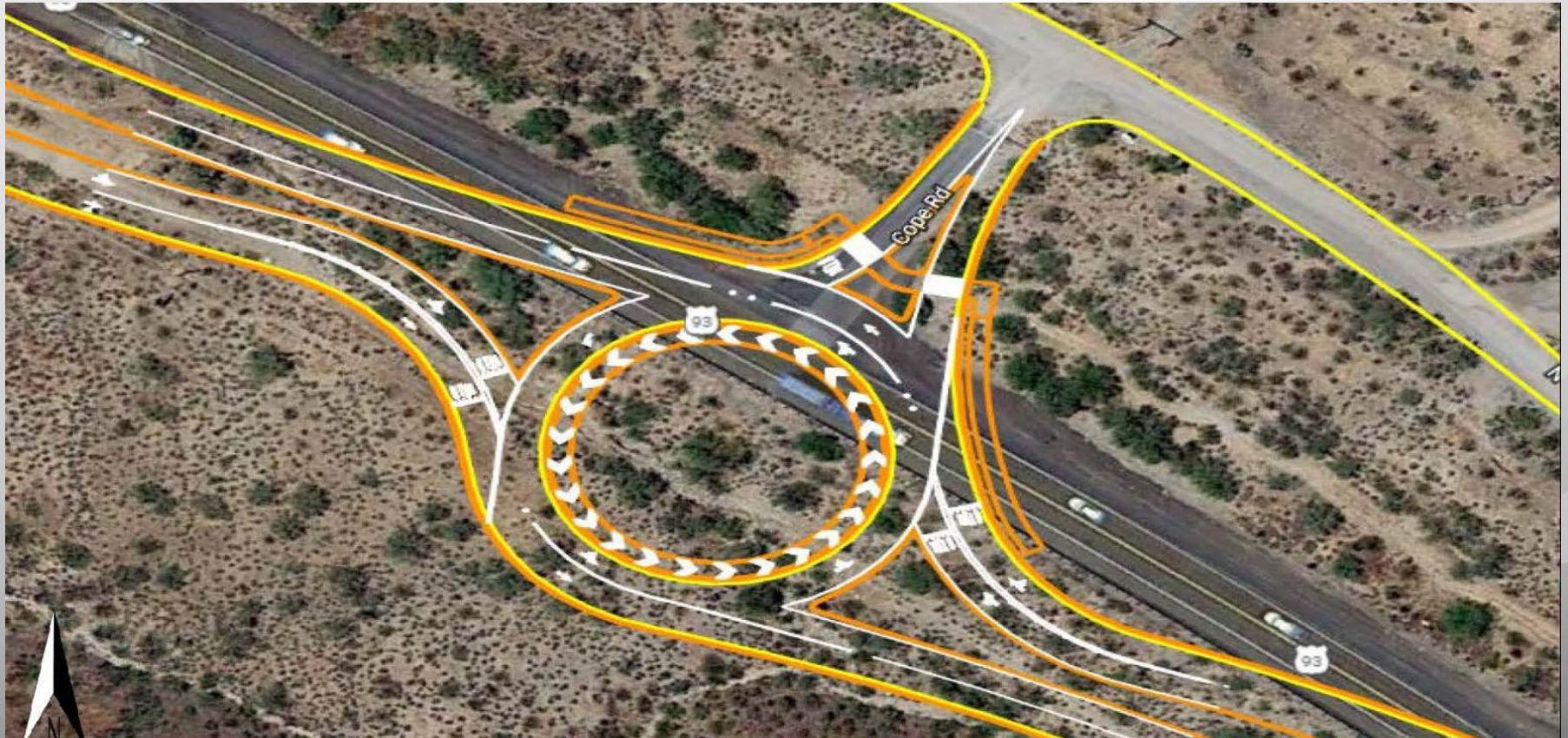
RINCON ROAD





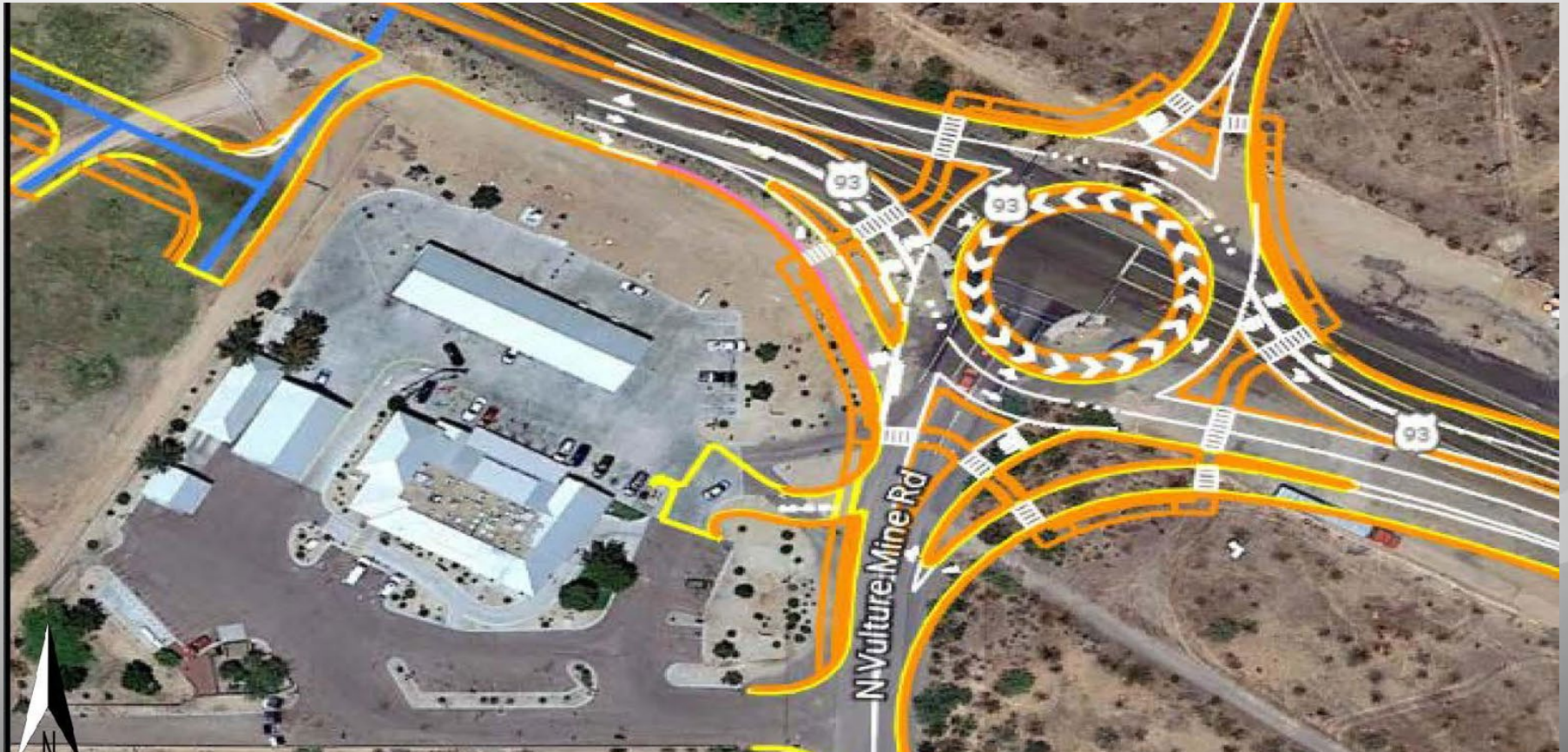
COPE ROAD



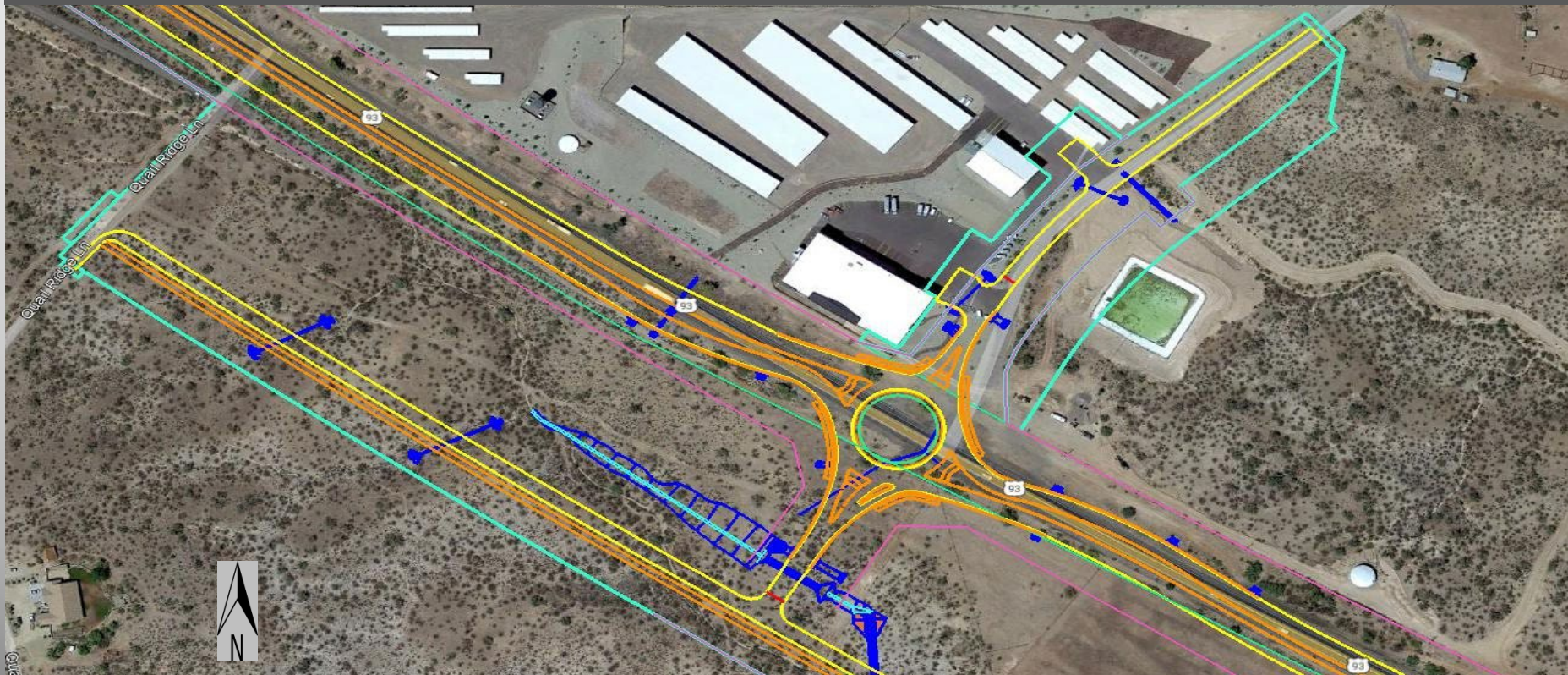


VULTURE MINE ROAD





SCENIC LOOP ROAD





Project Facts

- ❖ Excavation: Approximately 467,000 Cubic Yards
- ❖ Fill Dirt: Approximately 159,000 Cubic Yards
- ❖ Concrete Curb / Curb & Gutter: Approximately 59,200 Linear Feet
- ❖ Aggregate Base: Approximately 59,300 Cubic Yards
- ❖ Asphaltic Concrete: Approximately 128,000 Tons
- ❖ Drainage Pipe: Approximately 7,400 Linear Feet
- ❖ Storm Drain: Approximately 3,300 Linear Feet
- ❖ Pavement Markings: Temp: Approximately 313,000 Linear Feet
Final: Approximately 220,000 Linear Feet

STAY INFORMED

Project website & presentation link: azdot.gov/US93Wickenburg

Email notification: To receive traffic alerts via email, visit azdot.gov/US93Wickenburg and click on the “subscribe for updates” icon.

For phone & email contact:

Nicole Underwood, Community Relations Project Mgr.
480-601-1575 nunderwood@azdot.gov

For real-time highway traffic conditions statewide:

www.az511.gov or call 5-1-1, except while driving.

QUESTIONS