

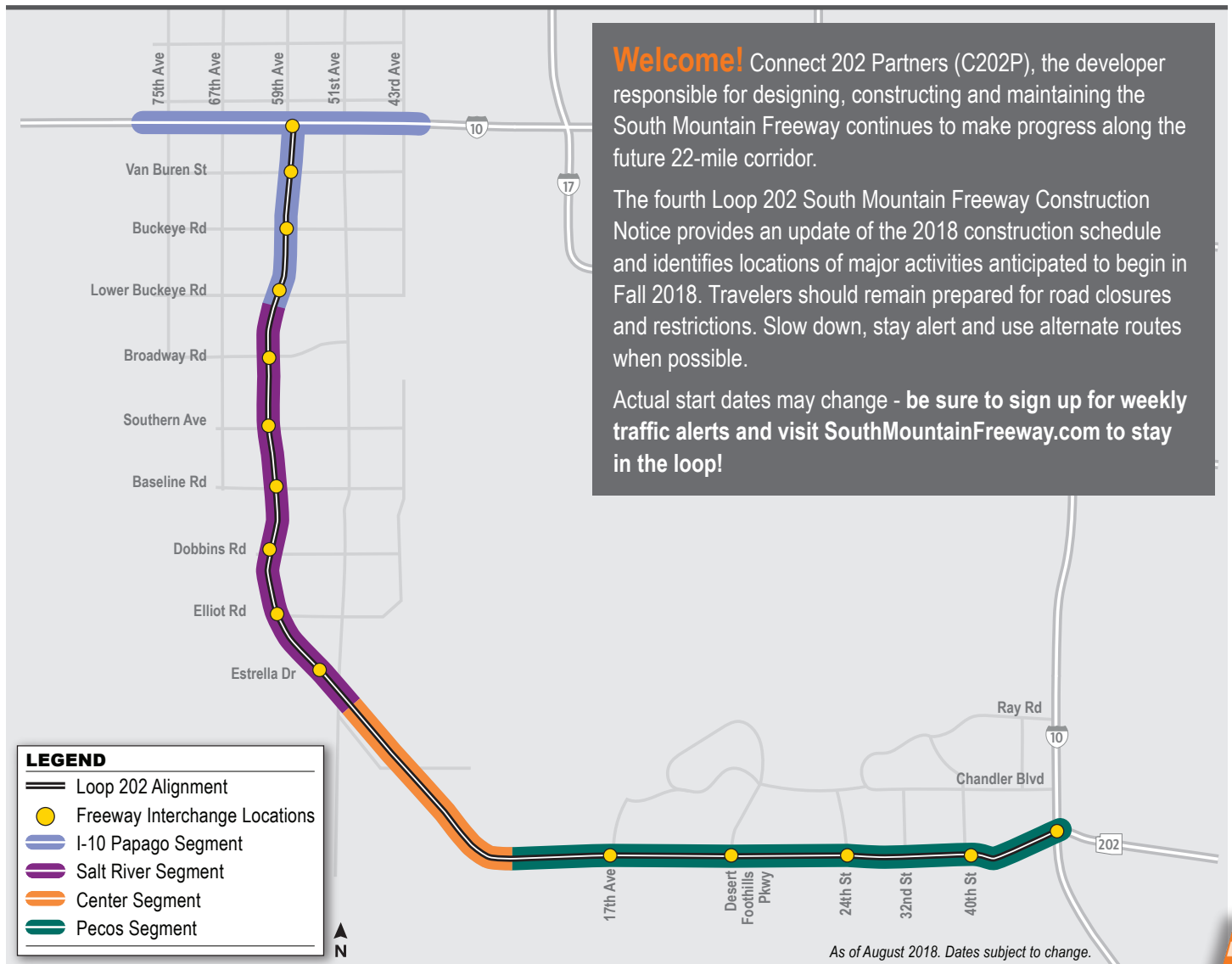
# CONSTRUCTION

# NOTICE

Issue 4 | September 2018



## CONSTRUCTION UNDERWAY IN ALL SEGMENTS



# I-10 PAPAGO SEGMENT

## Access Road Construction

Construction of the access roads continues and will be completed over the next four months, which will result in a change to how drivers access I-10 between 51st and 67th avenues. This work will require closures of I-10 as well as long-term and permanent closures of existing on- and off- ramps at 51st and 59th avenues.

## Anticipated Traffic Restrictions

To complete the work currently scheduled through mid-2019, the following street and freeway restrictions and closures are anticipated. Actual dates and times of restrictions and closures will be published in the weekly traffic alerts.

- Periodic closures of I-10 Papago Freeway at 59th Avenue for bridge construction
- Extended closures of I-10 ramps between 51st and 67th avenues to allow reconstruction of existing ramps and construction of new access roads
- Traffic shifts on I-10 between 51st and 59th avenues to allow for mainline widening and construction of HOV flyover ramps
- Extended closure of Sherman Street between 59th and 61st avenues
- Traffic shifts on 59th Avenue for frontage road construction



I-10 Papago Freeway access roads between 51st and 67th avenues

- Dirt hauls at night along 59th Avenue
- Traffic shifts for bridge and roadway construction
  - Van Buren Street between 59th and 61st avenues
  - Buckeye Road between 59th and 63rd avenues
  - Lower Buckeye Road between 59th and 63rd avenues

## I-10 Papago Segment Construction Schedule

Construction Activities	2018	2019	
	Late	Early	Mid
I-10 Access Roads	[Progress bar from late 2018 to early 2019]		
Bridges	[Progress bar from late 2018 to mid 2019]		
Dirt Hauls	[Progress bar from late 2018 to early 2019]		
Widening I-10	[Progress bar from late 2018 to mid 2019]		
Sound Walls	[Progress bar from late 2018 to early 2019]		
Utility Relocation	[Progress bar from late 2018 to mid 2019]		
Street Improvements	[Progress bar from late 2018 to mid 2019]		
Frontage Roads	[Progress bar from late 2018 to early 2019]		

As of August 2018. Dates subject to change.

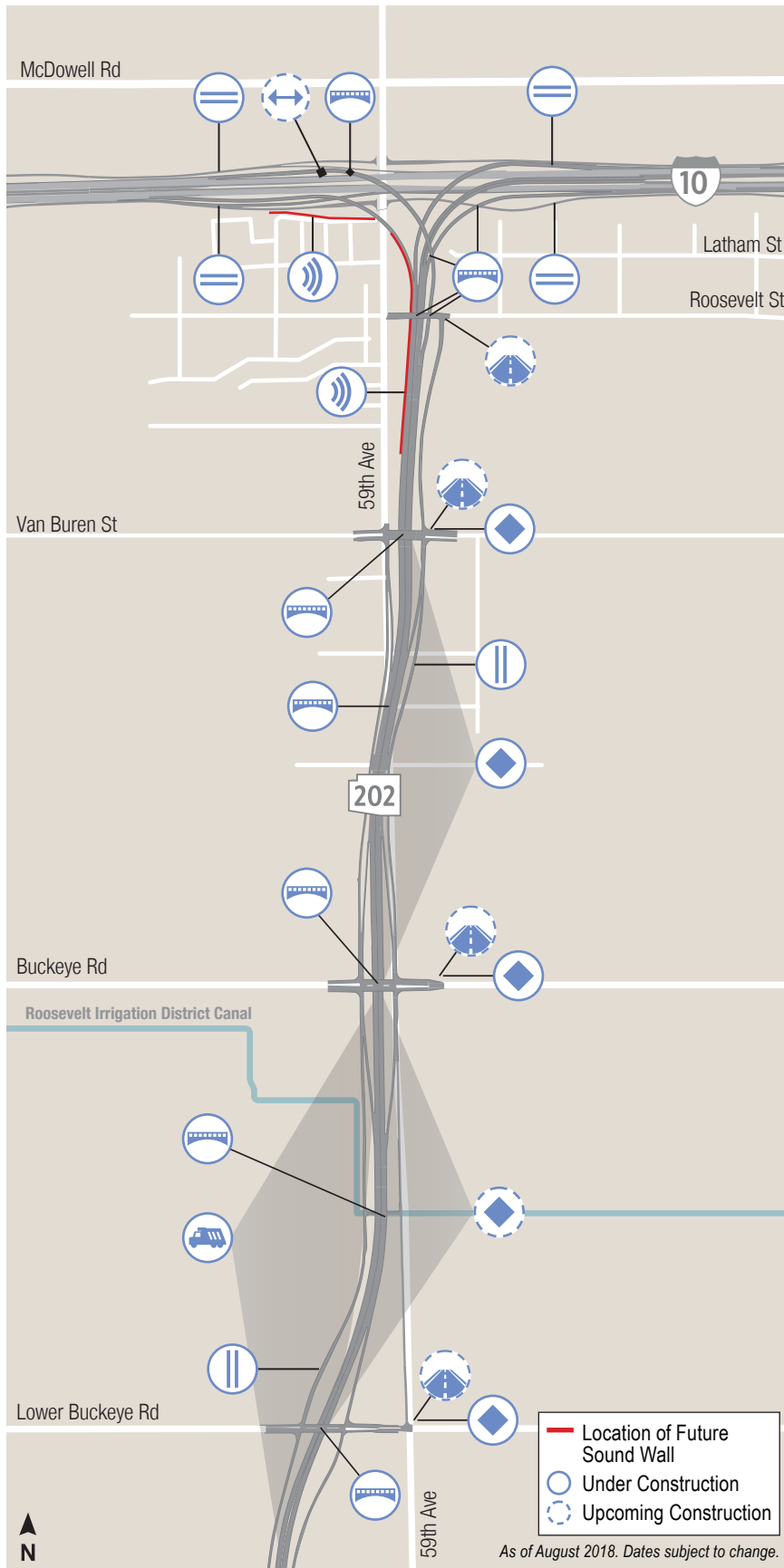


Bridge at the Roosevelt Irrigation District canal



Loop 202 north to I-10 west flyover bridge

## I-10 Papago Segment Ongoing and Upcoming Construction



Lowering falsework on bridge west of 59th Avenue



Aerial view of I-10/Loop 202 system interchange



Removal of I-10 eastbound on-ramp at 59th Avenue



Setting falsework on I-10 eastbound to Loop 202 southbound flyover ramp

# I-10 PAPAGO SEGMENT

## 59th Avenue Frontage Roads Construction



As part of the improvements for the Loop 202 South Mountain Freeway, two one-way frontage roads will be constructed along either side of 59th Avenue south of Roosevelt Street and north of Lower Buckeye Road. The frontage roads will provide northbound and southbound access to businesses and residents adjacent to the freeway.

The frontage roads will consist of two travel lanes in each direction and will be signalized at each major intersection. South of the Roosevelt Irrigation District Canal, a connector road will provide northbound and southbound access to the 59th Avenue frontage roads, allowing traffic to turn around mid-way between major crossroads.

Construction of the frontage roads will begin in early Fall 2018 and continue through early 2019. Traffic shifts and lane restrictions on 59th Avenue will be needed to facilitate construction of the frontage roads. Actual dates and times of restrictions will be published in the weekly traffic alerts.



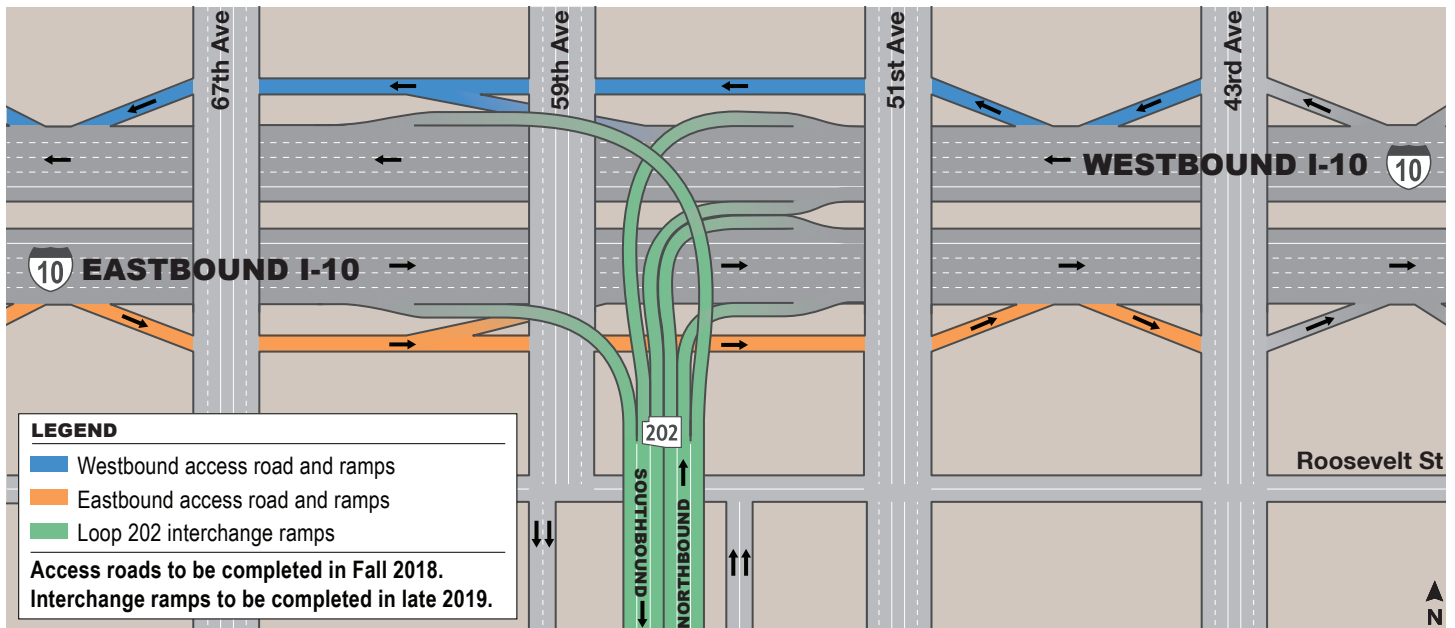
59th Avenue frontage road between the Loop 202/I-10 interchange and Van Buren Street (Image courtesy of ADOT)



Aerial view of 59th Avenue south of Roosevelt Street prior to frontage road construction

## I-10 PAPAGO SEGMENT

### Future Loop 202/I-10 Interchange (Late 2019)



## PECOS SEGMENT

### Diverging Diamond Interchange

A Diverging Diamond Interchange (DDI) provides an innovative, proven solution for moving traffic more quickly and safely than traditional intersections. A DDI differs from standard diamond interchanges in that local street traffic temporarily shifts to the left side while crossing the freeway, allowing for direct left turns onto entrance ramps without waiting for a traffic signal. The Loop 202 South Mountain Freeway will feature two half-DDIs in the Pecos Segment: 17th Avenue and Desert Foothills Parkway.

Features of a DDI:

- Innovative, proven solution for increased safety and mobility
- Allows traffic to move more quickly and safely than traditional intersections during peak travel times

The DDI will also feature signage, traffic signals, pavement markings and a raised concrete island where the lanes crisscross.



Simulation of the half Diverging Diamond Interchange at Desert Foothills Parkway  
 (Image courtesy of ADOT)



Simulation of the half Diverging Diamond Interchange at 17th Avenue  
 (Image courtesy of ADOT)

# PECOS SEGMENT

## Anticipated Traffic Restrictions

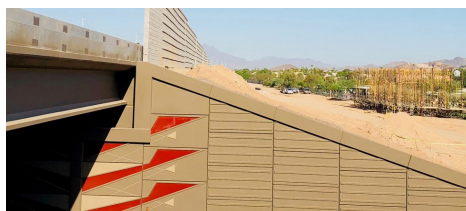
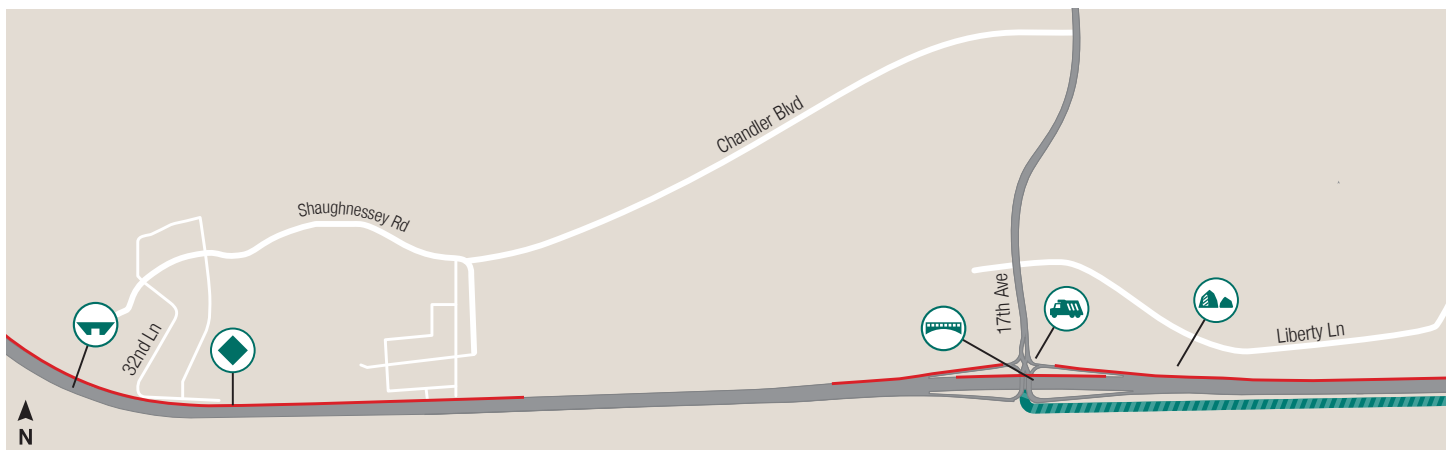
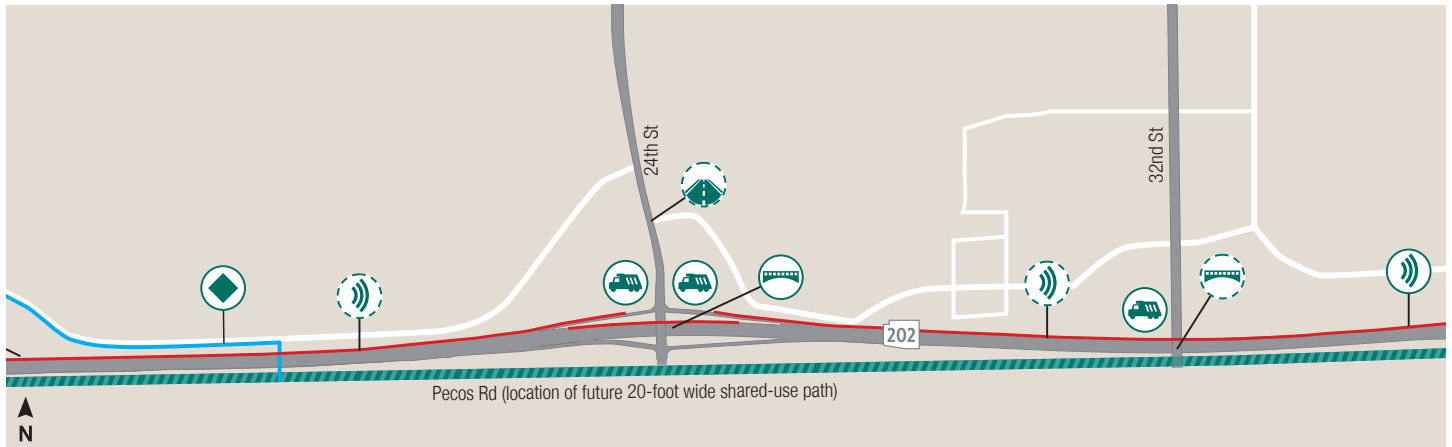
To complete the work currently scheduled through mid-2019, the following street restrictions and closures are anticipated. Actual dates and times of restrictions and closures will be published in the weekly traffic alerts.



Bridge construction over 24th Street

- Weekend and night closures of arterial cross streets to complete bridge construction
- Temporary traffic restrictions on Pecos Road, Desert Foothills Parkway and 17th Avenue during controlled rock blasting
- Flagging operations on arterial roads north of Pecos Road for truck traffic
- Night dirt hauls along Pecos Road
- Liberty Lane westbound lane restrictions between Desert Foothills Parkway and west of 24th Street
- Lane restrictions on local streets for utility relocations
- Traffic shift from Desert Foothills Parkway to an interim intersection, maintaining access to Pecos Road

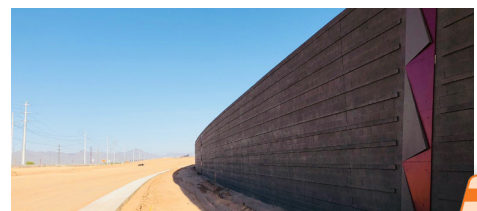
## Pecos Segment Ongoing and Upcoming Activities



Aesthetics applied to the bridge at 40th Street



Earthwork near Desert Foothills Parkway

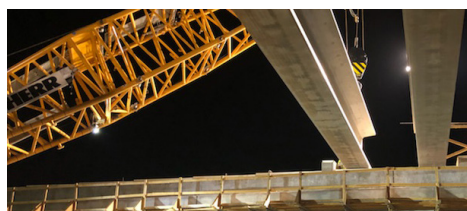
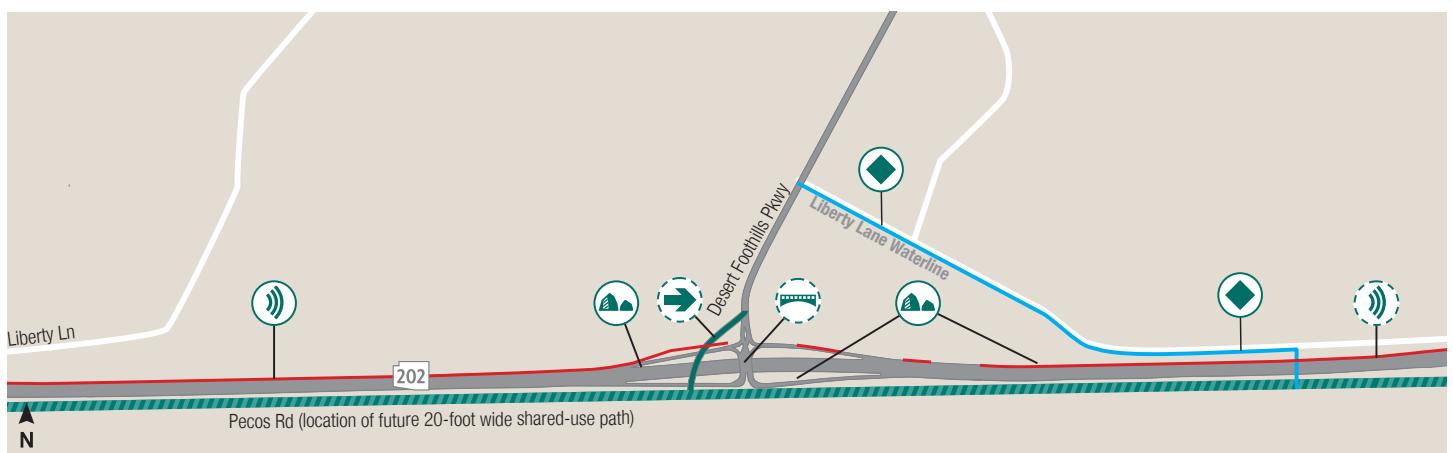
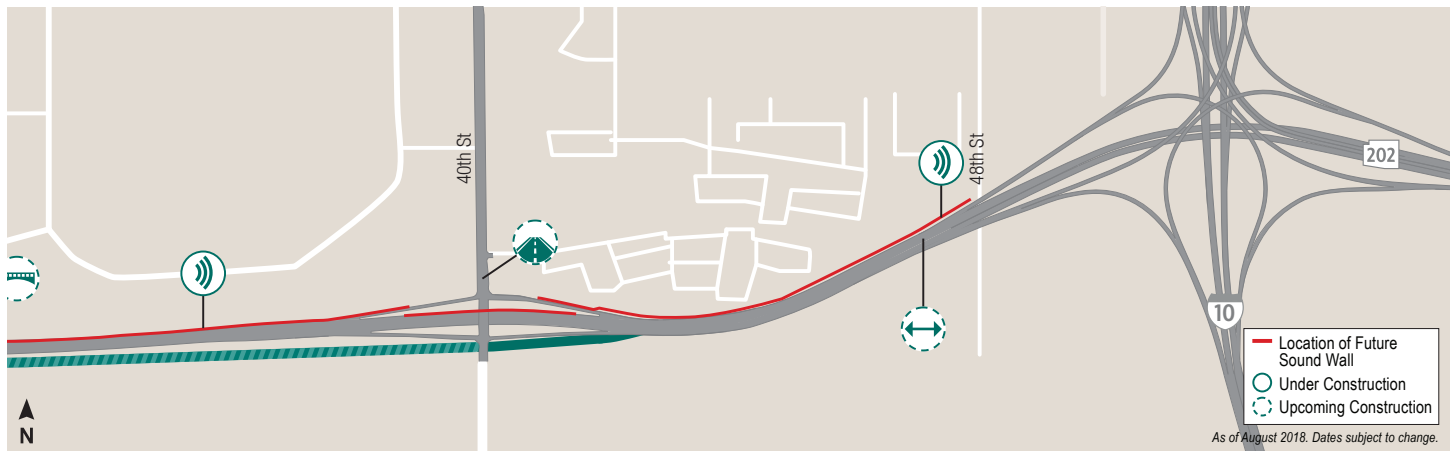


Painted sound wall near 48th Street

## Pecos Segment Construction Schedule

Construction Activities	2018	2019	
	Late	Early	Mid
Bridges	[Progress bar from late 2018 to mid 2019]		
Dirt Hauls	[Progress bar from late 2018 to mid 2019]		
Earthwork/Blasting	[Progress bar from late 2018 to early 2019]		
Mainline Paving	[Progress bar from late 2018 to mid 2019]		
Sound Walls	[Progress bar from late 2018 to mid 2019]		
Street Improvements	[Progress bar from late 2018 to mid 2019]		
Utility Relocation	[Progress bar from late 2018 to mid 2019]		
Interim Interchange	[Progress bar from late 2018 to mid 2019]		

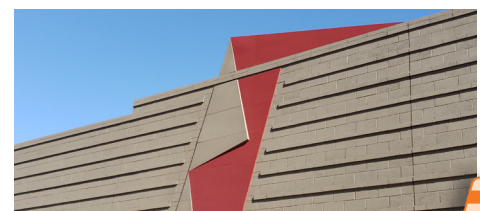
As of August 2018. Dates subject to change.



Girders set on the bridge at 24th Street



Delivery of the Liberty Lane 48-inch waterline  
 (Photo courtesy of ADOT)



Sound wall aesthetics near 40th Street

# SALT RIVER SEGMENT

## Anticipated Traffic Restrictions

To complete the work currently scheduled through mid-2019, the following street restrictions and closures are anticipated. Actual dates and times of restrictions and closures will be published in the weekly traffic alerts.

- Closure of Estrella Drive between 51st and 59th avenues for up to 150 days
- Closure of Dobbins Road between 51st and 59th avenues for up to 150 days
- Traffic shifts for bridge and roadway construction
  - Baseline Road between 59th and 63rd avenues
  - Southern Avenue between 59th Avenue and 64th Drive
  - Broadway Road between 59th and 63rd avenues



Constructing the two half-mile long Salt River bridges  
 (Photo courtesy of ADOT)

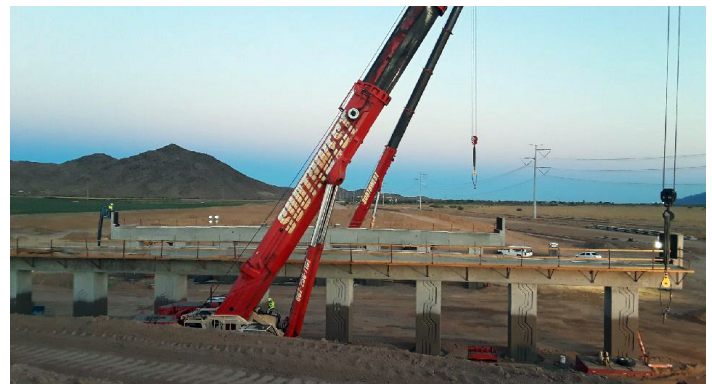
## Salt River Segment Schedule

Construction Activities	2018	2019	
	Late	Early	Mid
Bridges	[Progress bar spanning from late 2018 to mid-2019]		
Dirt Hauls	[Progress bar spanning from late 2018 to mid-2019]		
Drainage Culverts	[Progress bar spanning from late 2018 to mid-2019]		
Earthwork	[Progress bar spanning from late 2018 to mid-2019]		
Utility Relocation	[Progress bar spanning from late 2018 to mid-2019]		
Sound Walls	[Progress bar spanning from late 2018 to early 2019]		

As of August 2018. Dates subject to change.



Estrella Drive bridge structure



Preparing to set girders on the bridge at Estrella Drive Interchange



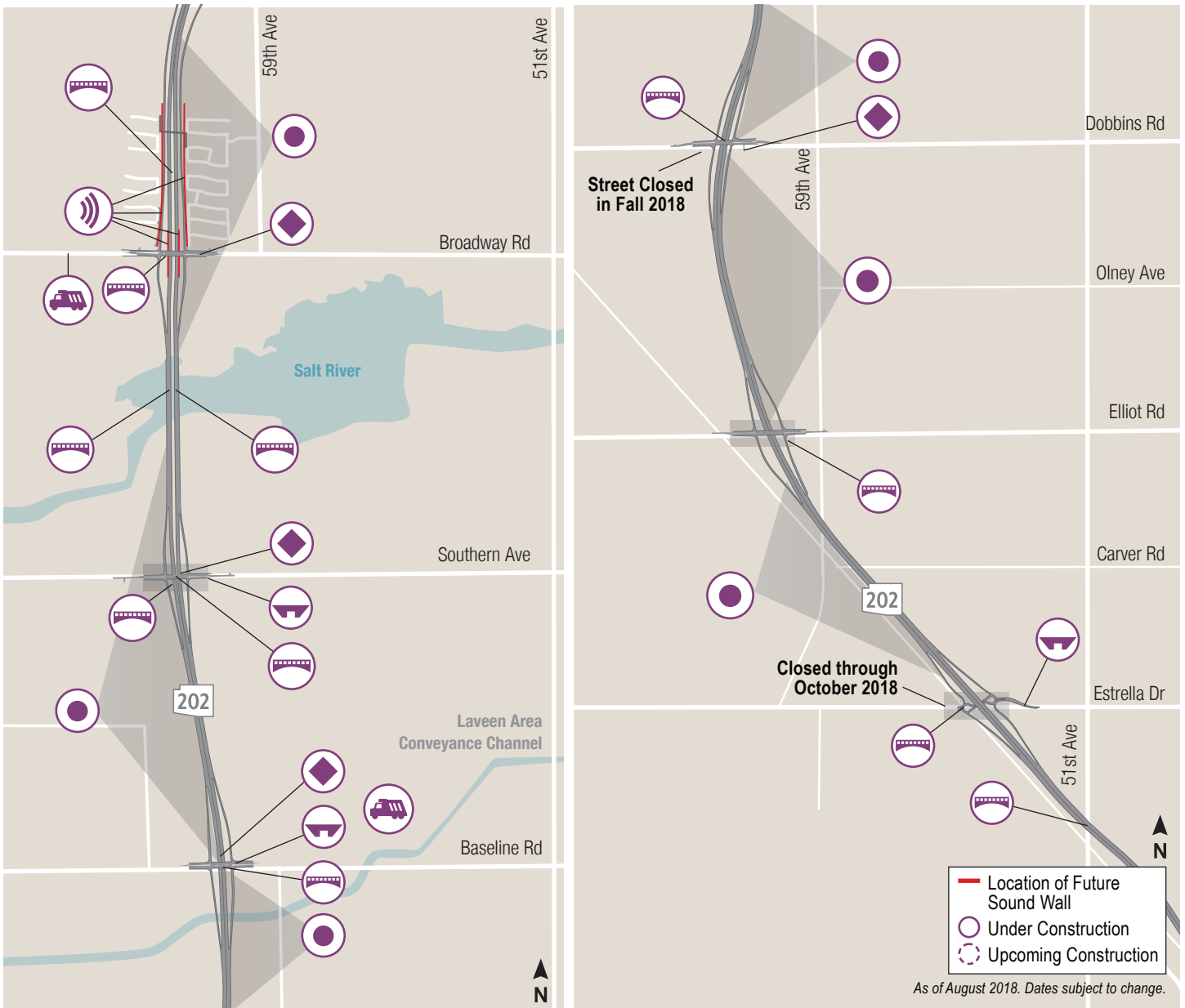
Elliot Road passing over the Loop 202 freeway



Girders being set on the 51st Avenue bridge



### Salt River Segment Ongoing and Upcoming Activities



Salt River bridges

## SALT RIVER SEGMENT

### Estrella Drive Interchange

The Estrella Drive interchange will have an innovative, modern double roundabout that moves traffic efficiently and safely. Based on projected traffic volumes and the freeway's alignment through the area, ADOT determined double roundabouts to be a better option than a conventional diamond interchange for this location.

In order to build the Estrella Drive traffic interchange, construction crews closed the roadway for 150 days beginning in May 2018 to complete the following work:

- Remove existing Estrella Drive
- Prepare earthwork to construct the freeway embankment
- Build a 100-foot long freeway bridge over Estrella Drive
- Construct double roundabouts to allow access to the freeway
- Install underground utilities and drainage structures
- Place foundations for traffic signals and lighting
- Prepare ramp and freeway surfaces

Once the closure is removed, travel will be available in one lane in each direction, allowing motorists to use the roundabout as a crossroad until freeway construction is complete.



Aerial view of double-roundabout construction at Estrella Drive



Simulation of the finished double-roundabout at Estrella Drive (Image courtesy of ADOT)



Forming caps for the bridge at Estrella Drive interchange



Preparing for girders to be set for the Estrella Drive interchange

# CENTER SEGMENT

## Anticipated Traffic Restrictions

Construction activities in the Center Segment between 51st Avenue and 32nd Lane began in early 2018. These activities included geotechnical borings, plant salvage, controlled rock blasting and earthwork. To complete the work currently scheduled through mid-2019, the following road restrictions are anticipated. Actual dates and times of restrictions will be published in the weekly traffic alerts.



Haul trucks in the Center Segment

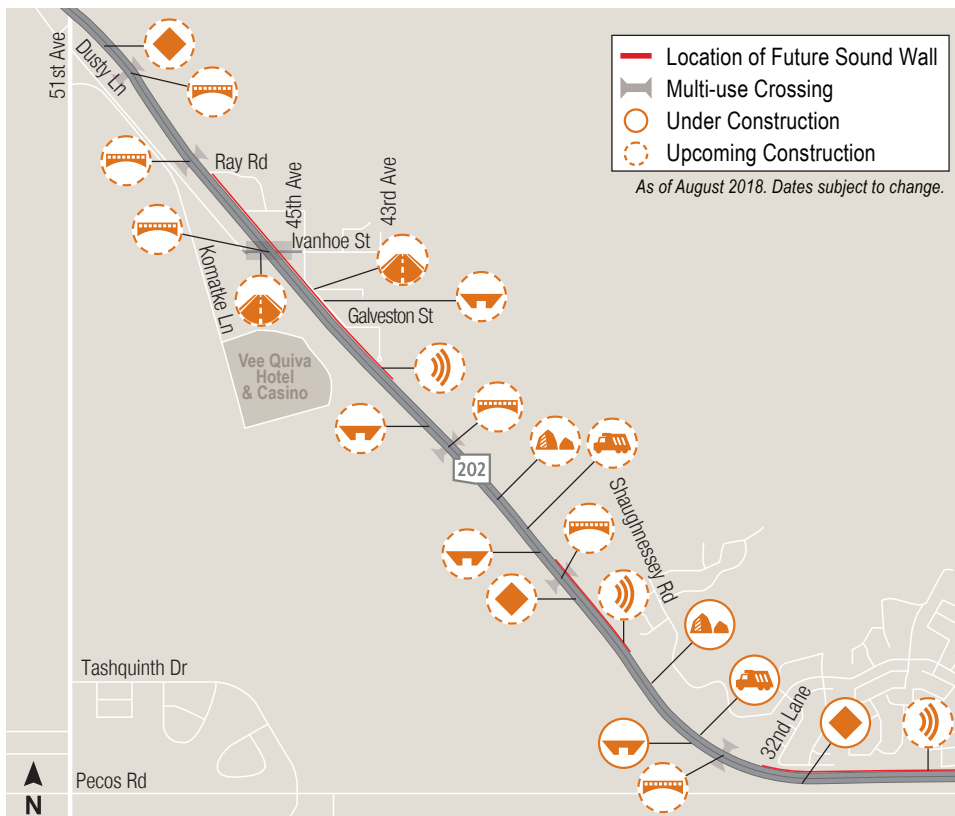
- Temporary traffic restrictions on Shaughnessey Road near 32nd Lane during controlled rock blasting
- Temporary restrictions on arterial roads between 43rd Avenue and Ray Road

## Center Segment Construction Schedule

Construction Activities	2018	2019	
	Late	Early	Mid
Blasting/Earthwork	[Orange bar spanning from late 2018 to mid-2019]		
Dirt/ Rock Hauls	[Orange bar spanning from late 2018 to mid-2019]		
Drainage Culverts	[Orange bar spanning from late 2018 to early 2019]		
Bridges	[Orange bar spanning from late 2018 to mid-2019, with an arrow pointing right]		
Utility Relocation	[Orange bar spanning from late 2018 to mid-2019]		
Sound Walls		[Orange bar spanning from early 2019 to mid-2019]	
Street Improvements		[Orange bar spanning from early 2019 to mid-2019]	

As of August 2018. Dates subject to change.

## Center Segment Ongoing and Upcoming Activities



Rock being moved in the Center Segment



Drilling near the south ridge

## 2 MILLION SAFE MAN HOURS - NO TIME LOST!

Safety is a top priority for ADOT and C202P, and it drives the actions of every employee at every location, every day. As a result of our commitment to safety, ADOT and C202P recently celebrated 2-Million Safe Man Hours without a lost time injury on the Loop 202 South Mountain Freeway project.

We need your help to ensure that motorists and construction workers get home safely to their families and without incident. Please remember to follow the three S's:

**Speed** – Slow down when approaching work zones and follow posted speed limits.

**Space** – Leave plenty of space between your vehicle and the one ahead of you, as well as traffic barriers, trucks, construction equipment and workers.

**Stress** – Keep your cool. Remember, this is only temporary. Plan ahead, leave early or use public transit to avoid delays and reduce your time commuting.



LOOP 202  
*South Mountain*  
Freeway

## SIGN UP FOR WEEKLY **TRAFFIC ALERTS**

[www.SouthMountainFreeway.com/FollowUs](http://www.SouthMountainFreeway.com/FollowUs)

 Like us on Facebook: @SouthMountainFreeway

 Follow us on Instagram: @SouthMountainFreeway

 Website: [www.SouthMountainFreeway.com](http://www.SouthMountainFreeway.com)

 Hotline: 1-855-SMF-L202 (1-855-763-5202)

 En español: 623-239-4558

 Email: [SMFinfo@C202P.com](mailto:SMFinfo@C202P.com)

Pursuant to Title VI of the Civil Rights Act of 1964 and the Americans with Disabilities Act (ADA), ADOT does not discriminate on the basis of race, color, national origin, or disability. Persons who require a reasonable accommodation based on language or disability should contact the South Mountain Freeway project team at 1-855-763-5202 or [SMFinfo@C202P.com](mailto:SMFinfo@C202P.com). Requests should be made as early as possible to ensure the project team has an opportunity to address the accommodation. Si usted necesita la asistencia de un traductor o intérprete en español para la reunión, por favor comuníquese al 623.239.4558.