

Alternative F

Alternative F is an alternative route formerly proposed by the US 180 Winter Traffic Study to directly connect US 180 to I-40. This alternative route is 6.9 miles that utilizes existing forest service roads to bypass Flagstaff by connecting US 180 to I-40. Travelers leaving Snow Bowl would head towards Flagstaff on US 180 and make a right turn onto FS 6149 for approximately 1/2 a mile to access FS 668D and FS 506/518 for the remainder of the alignment. A southbound right turn deceleration lane on US 180 approaching FS 6149 will be necessary.

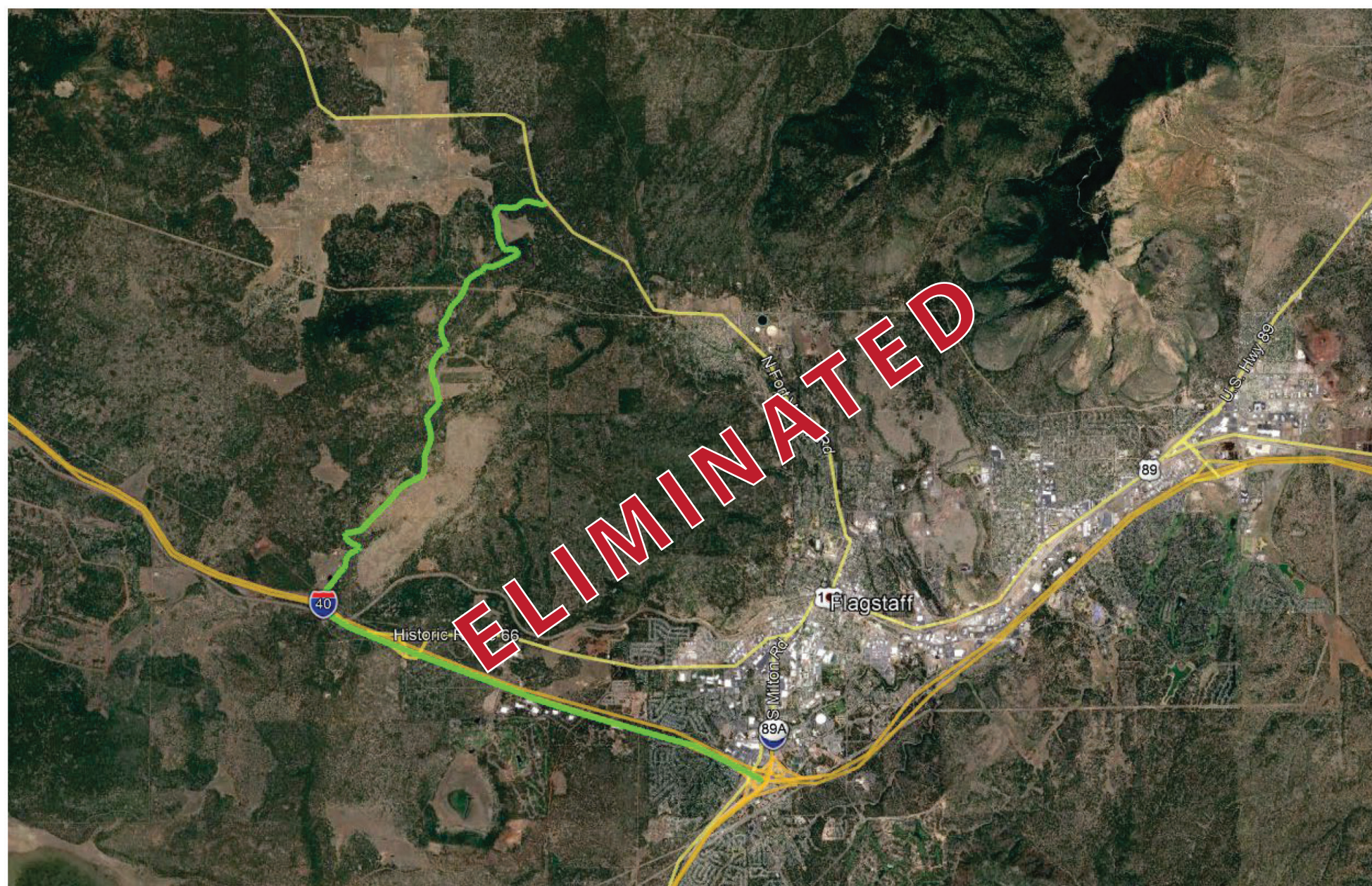
Tier 2 Rank

6th

Tier 2 Score

27.51

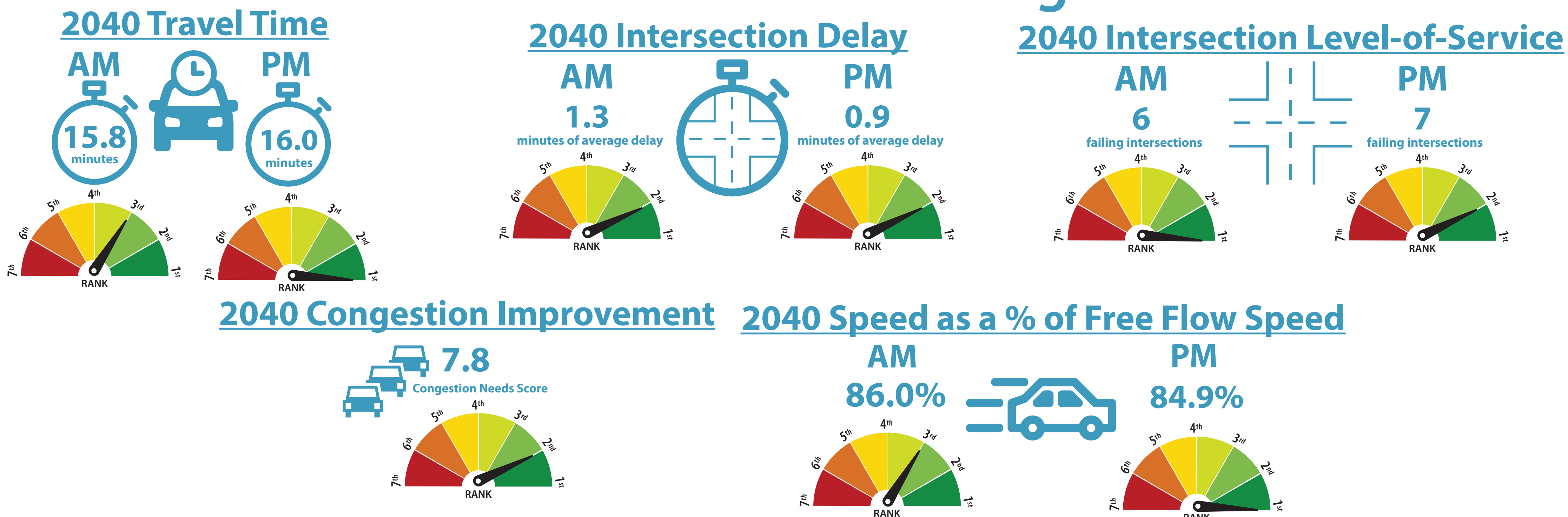
Hidden Hollow Road Route



The Arizona Department of Transportation (ADOT) and its partner agencies have eliminated this alternative from further consideration due to minimal travel time improvements, high costs, negative right-of-way impacts, and negative environmental impacts.

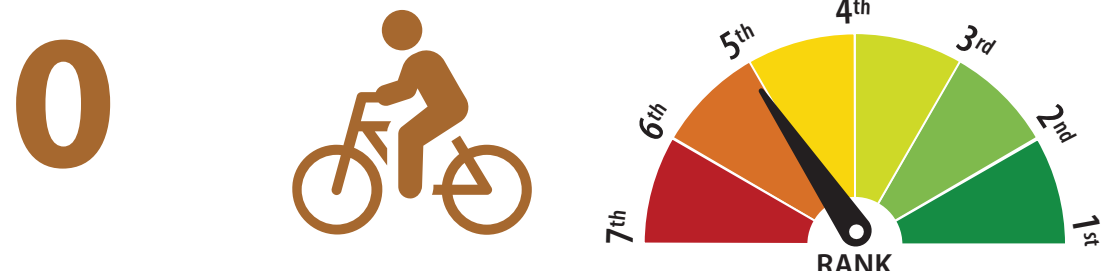
Tier 2 Evaluation Criteria Results

Reduction in Vehicular Congestion

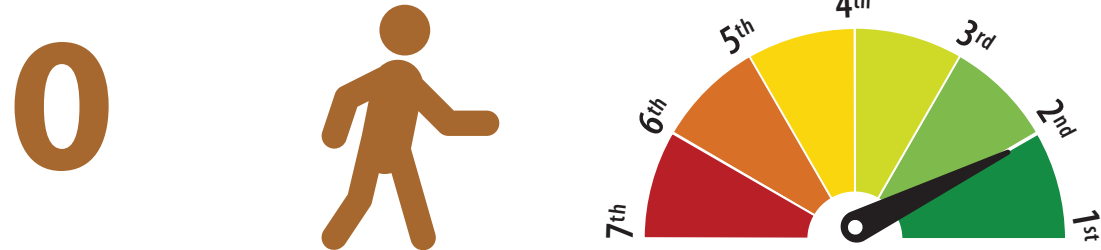


Expand Travel Modes

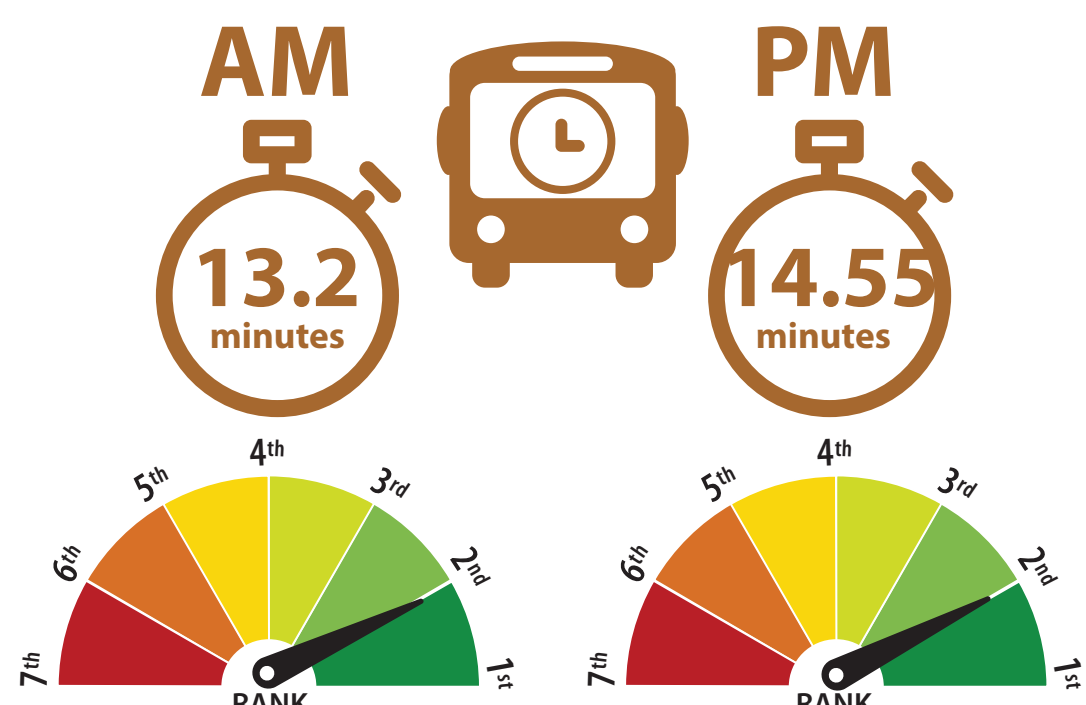
Improved Bicycle Facilities



Improved Pedestrian Facilities



2040 Transit Travel Time

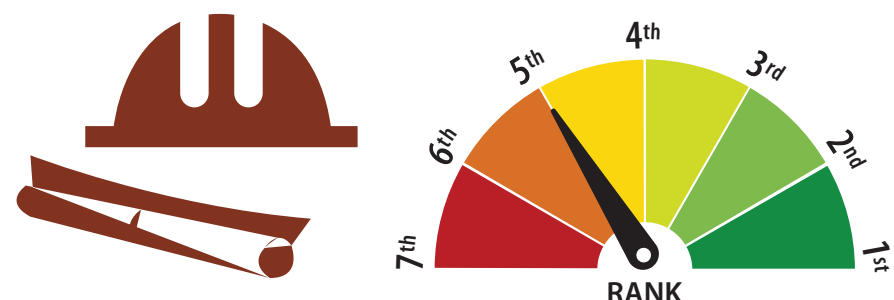


Cost / Implementation

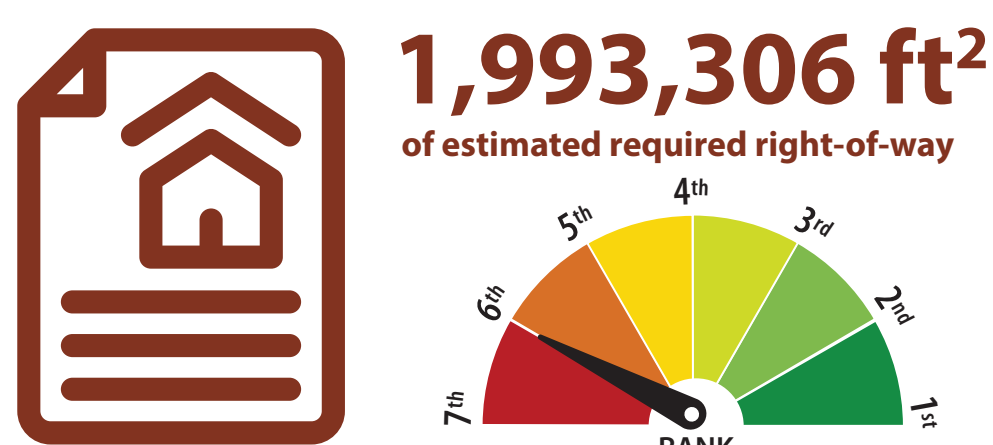
Project Cost

\$62,352,890

Total Project Cost Estimate



Right-of-Way Impact



Safety

Reduction in All Crashes



Reduction in Injury-Related Crashes



Reduction in Bicycle-Related Crashes

