

Alternative D

Alternative D consists of three roadway segments to reflect the changing character over its length:

- Segment 1: no changes to current roadway (Rte 66 – Columbus Avenue)
- Segment 2: the addition of a dynamic southbound shoulder for transit, emergency vehicles, and bicyclist (Columbus Avenue to Peak View Street)
- Segment 3: the addition of a dynamic southbound shoulder for transit, emergency vehicles, and bicyclists (Peak View to Snow Bowl Road)

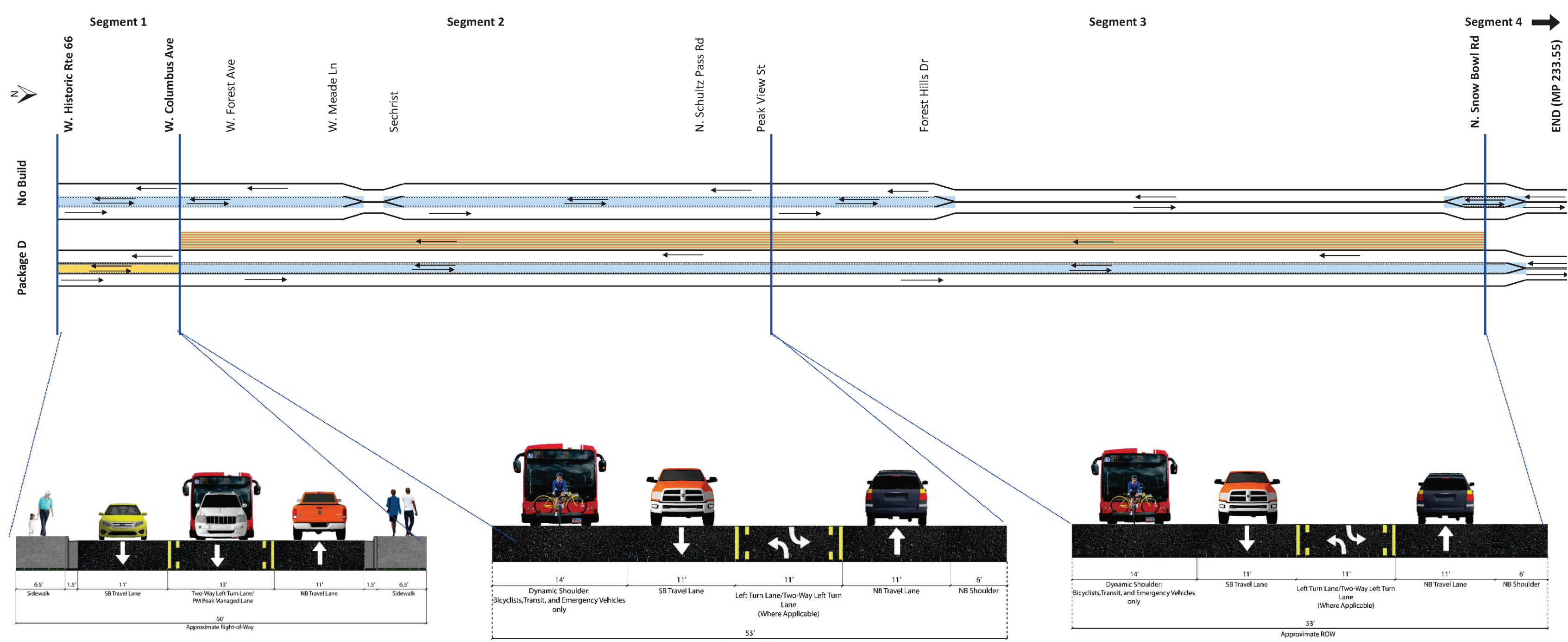
Tier 2 Rank

2nd

Tier 2 Score

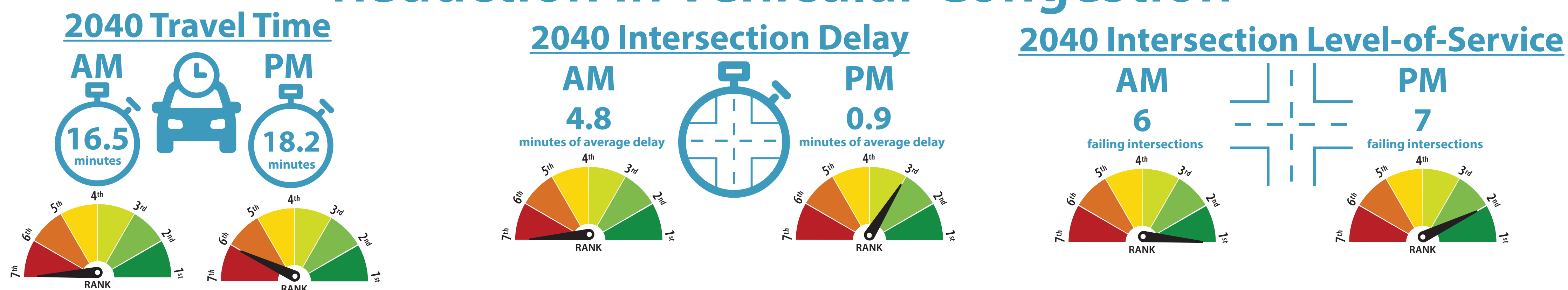
41.38

- LEGEND**
- General Purpose Lane
 - Bike Lane/Bikeway
 - Dynamic Shoulder
 - Two-way Left Turn Lane (TWLTL)
 - TWLTL or Peak Hour Managed Lane - All Traffic
 - TWLTL or Peak Hour Managed Lane - Transit Only

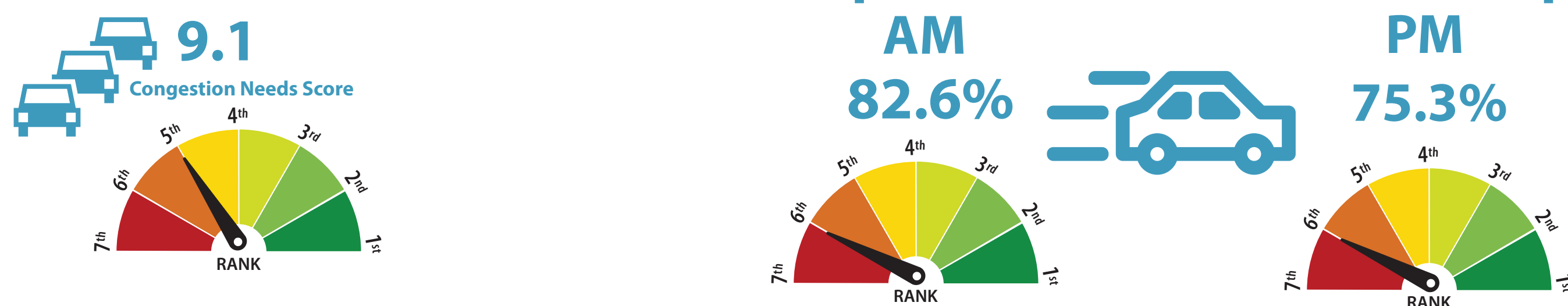


Tier 2 Evaluation Criteria Results

Reduction in Vehicular Congestion

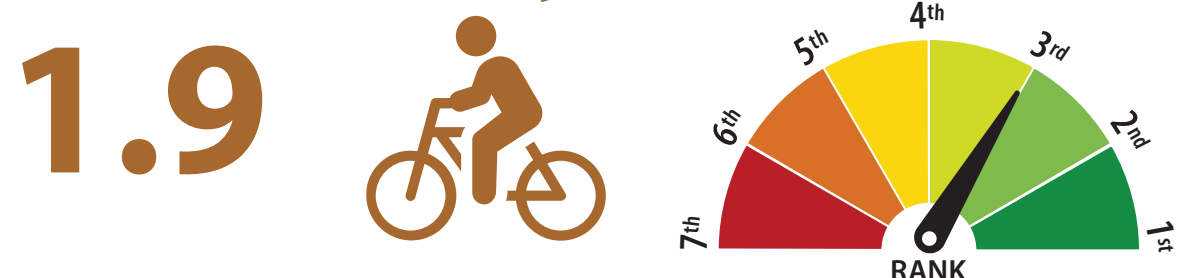


2040 Congestion Improvement 2040 Speed as a % of Free Flow Speed

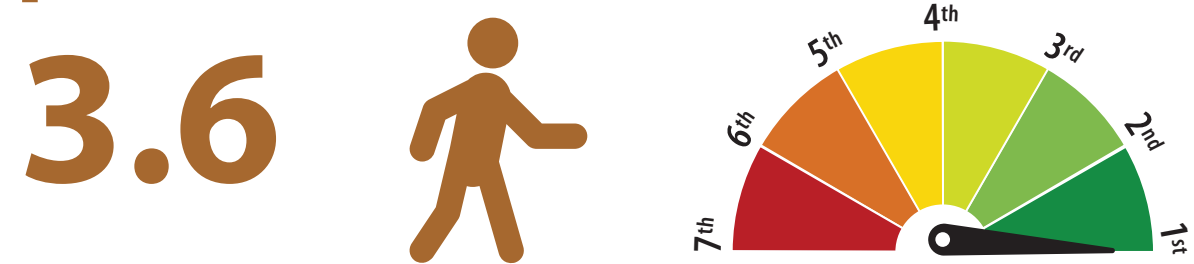


Expand Travel Modes

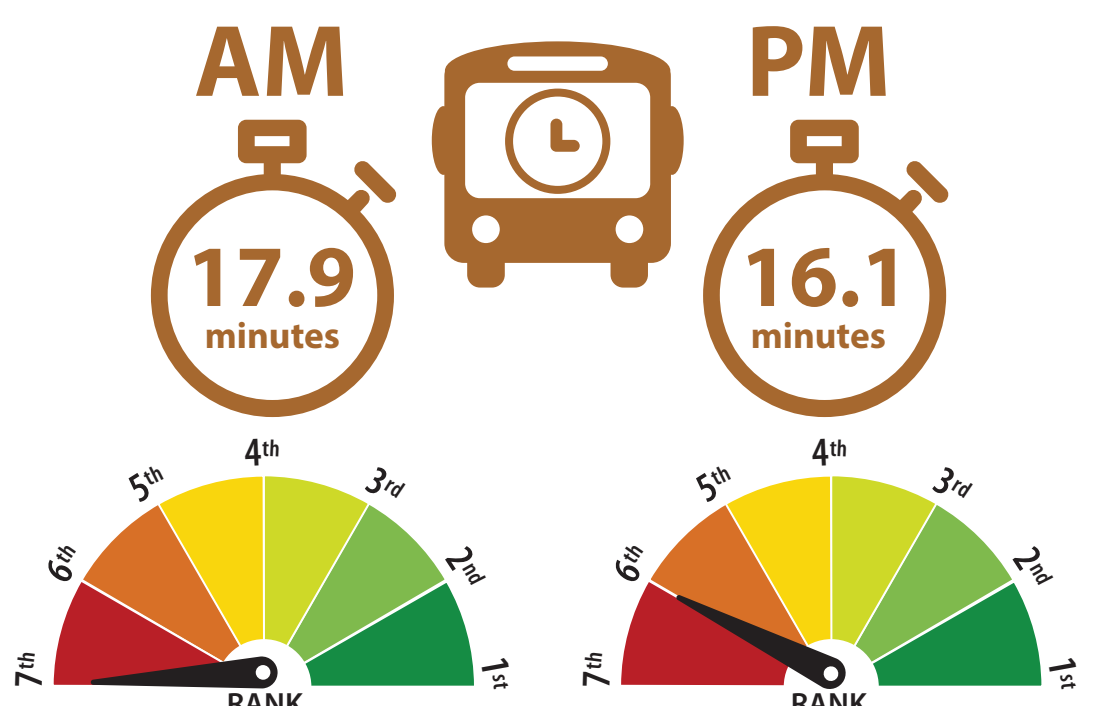
Improved Bicycle Facilities



Improved Pedestrian Facilities



2040 Transit Travel Time

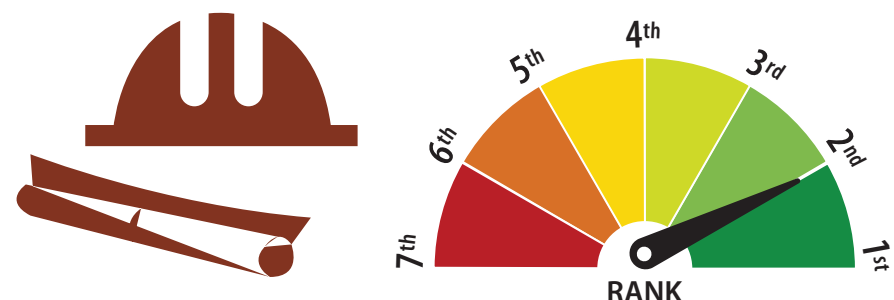


Cost / Implementation

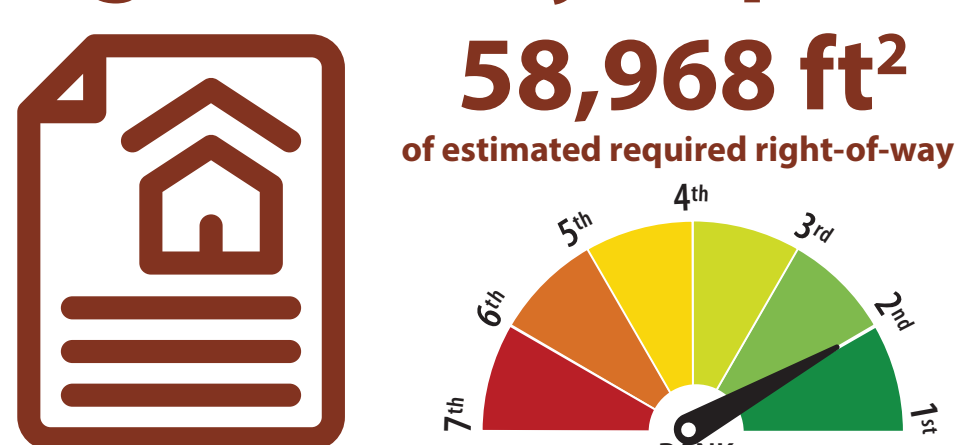
Project Cost

\$20,652,488

Total Project Cost Estimate



Right-of-Way Impact



Safety

Reduction in All Crashes



Reduction in Injury-Related Crashes



Reduction in Bicycle-Related Crashes

