

**APPENDIX H:  
Preliminary Design  
Public Input Meetings Presentation**

LOOP 202  
*South Mountain*  
Freeway



# Preliminary Design Public Input Meetings

Sept. 27 & 28, 2016  
Oct. 6, 2016



# Welcome!

- Purpose of meeting
  - To obtain public input on preliminary design plans for the South Mountain Freeway (SMF) Project
  - *Not* to debate project alignment and “build or no build”
- Agenda
  - 6:30 – 7:30 p.m. □ formal presentation followed by brief Q&A
  - 7:30 – 8:00 p.m. □ Visit information stations and speak one-on-one with project representatives

# Ground Rules

- Please be courteous to those who wish to hear the presenters
  - No calling out during the presentation
  - Write your questions on the white question cards provided at the door
    - Cards to be collected during and at the end of the presentation
    - Like questions to be grouped with one response provided for each
    - Comments, questions and responses from comment forms and meeting Q&A to be incorporated in a public meeting report
      - Available on [SouthMountainFreeway.com](http://SouthMountainFreeway.com) in early November



# Ground Rules

- For public safety:
  - Meeting disruptions will not be permitted due to limited time for use of meeting venue
    - Facility available until 8 p.m.
  - Disruptors may be escorted from the meeting facility

# Project Background and Overview

- Included in voter-approved:
  - Regional Freeway and Highway Program (1985)
  - Regional Transportation Plan (2004)
- Key component of region's multimodal transportation plan
  - Will improve regional mobility
- Last segment to complete the Loop 202 system
  - Provides alternative to I-10 through downtown Phoenix for motorists traveling between East and West Valley



LOOP 202  
*South Mountain*  
Freeway

# Project Budget and Contract Type

- Total project budget    □ 1.77 billion
  - Represents largest highway project in state history
  - Involves federal, state and local funding
  - Includes costs for right of way acquisition, design, construction, administrative oversight, etc.
  
- Public-Private Partnership (P3) – a partnership of a government agency and one or more private sector companies

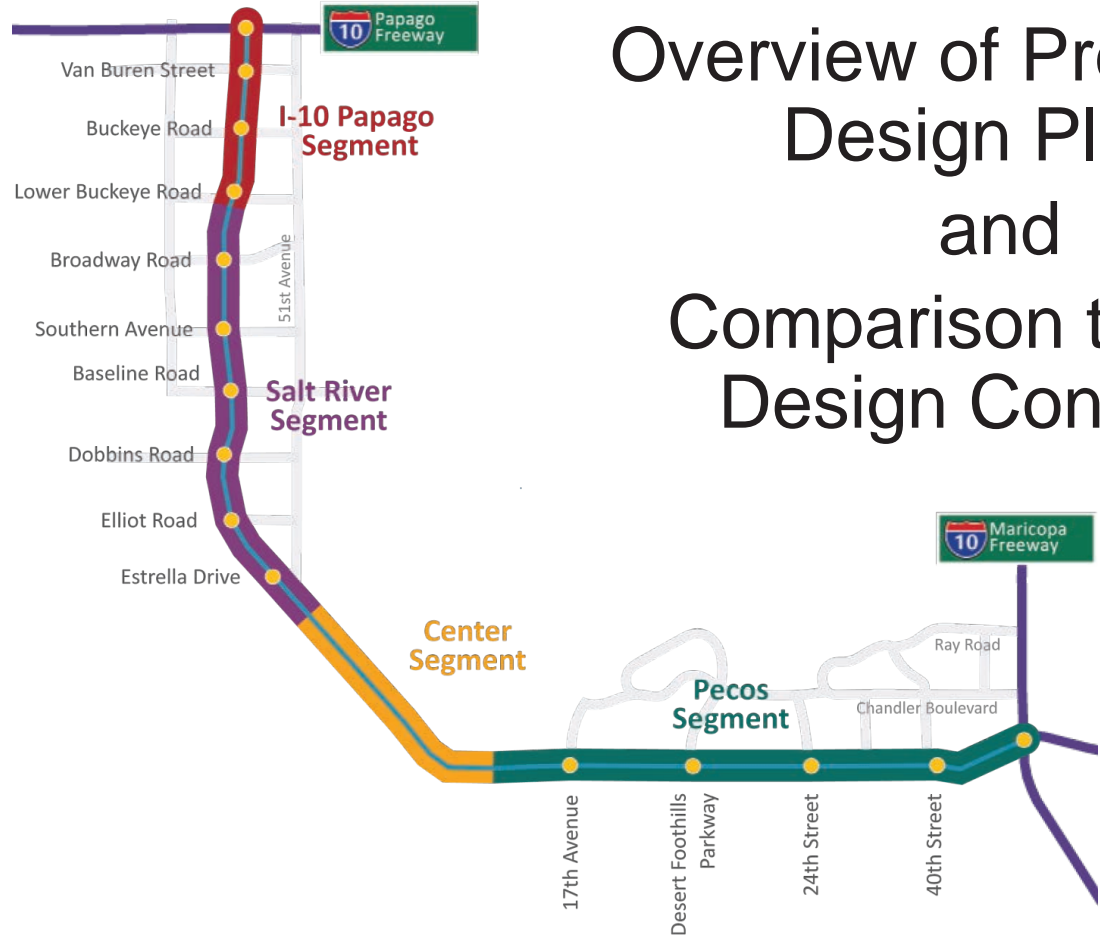
# Design-Build-Maintain Project Delivery

- Design, construct and maintain entire 22-mile freeway
  - Promotes collaboration and innovation between design, construction and maintenance
- Proven method to accelerate construction
  - Enables concurrent design, public involvement, right of way acquisition, and construction activities
  - Delivers regional freeway three years sooner

# Project Description

- 22 miles of new freeway, including:
  - Interchanges at approximately 1-mile intervals
  - 3 general purpose lanes and 1 HOV lane each direction
  - Approximately 45 bridges
  - Direct HOV access at I-10 (Papago Freeway)
  - Native landscaping and landform graphics
  - Nearly 11 miles of noise walls
  - Aesthetic treatments on structures
  - Electronic messaging and information system
  - Shared-use path along Pecos Road alignment
  - Pedestrian bridge at alignment of Elwood Street

# Loop 202 (South Mountain Freeway)



## Overview of Preliminary Design Plans and Comparison to 2013 Design Concepts

# Preliminary Design Plans

- ADOT shared early design concepts with the public during environmental phase
- Refinements from early concepts include:
  - Modifying interchanges to improve traffic operations and minimize right of way requirements
  - Diverging diamond interchanges at Desert Foothills Parkway and 17th Avenue
  - Double roundabout configuration at Estrella Drive replaces interchange at 51st Avenue
  - Addition of shared-use path along Pecos alignment and pedestrian bridge at Elwood Street alignment

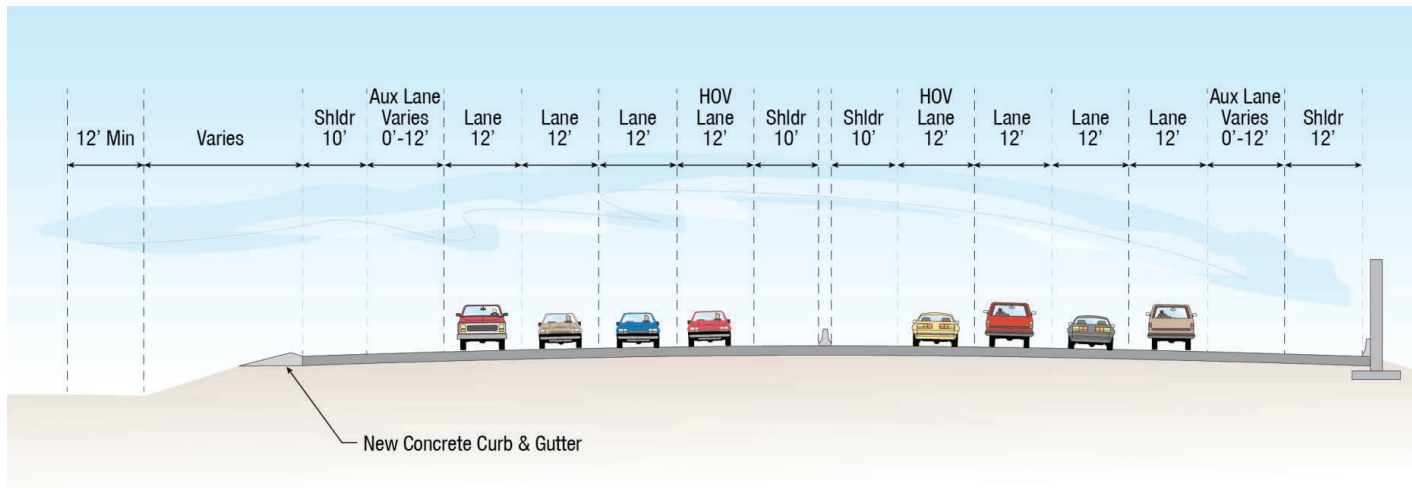
# Interchange Modifications

- Crossroads go over freeway at these locations:
  - Desert Foothills Parkway
  - Elliot Road
  - Dobbins Road
  - Southern Avenue
  - Broadway Road
  
- Reasons for modifications:
  - Minimize right of way requirements
  - Avoid conflicts at certain locations, e.g., utilities, wells, etc.
  - Balance earthwork and minimize number of trips required to haul excavated earth through community



# South Mountain Freeway Cross Section

- 3 general purpose lanes and one HOV lane in each direction
  - Auxiliary lanes
  - Minimum 10-foot shoulders

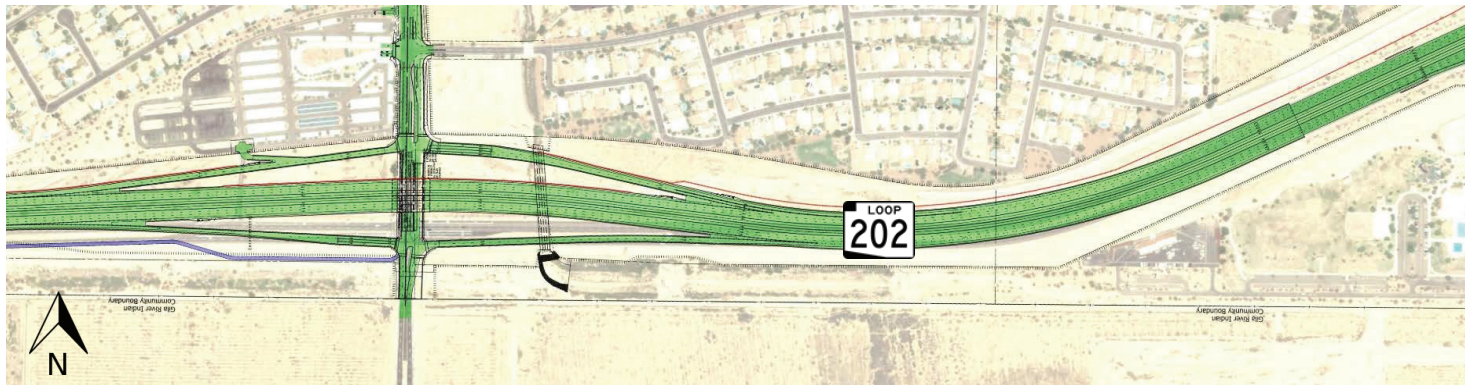


# Pecos Road and 40th Street

2013



2016



LOOP 202  
*South Mountain*  
Freeway

# Pecos Road and 32nd Street

2013

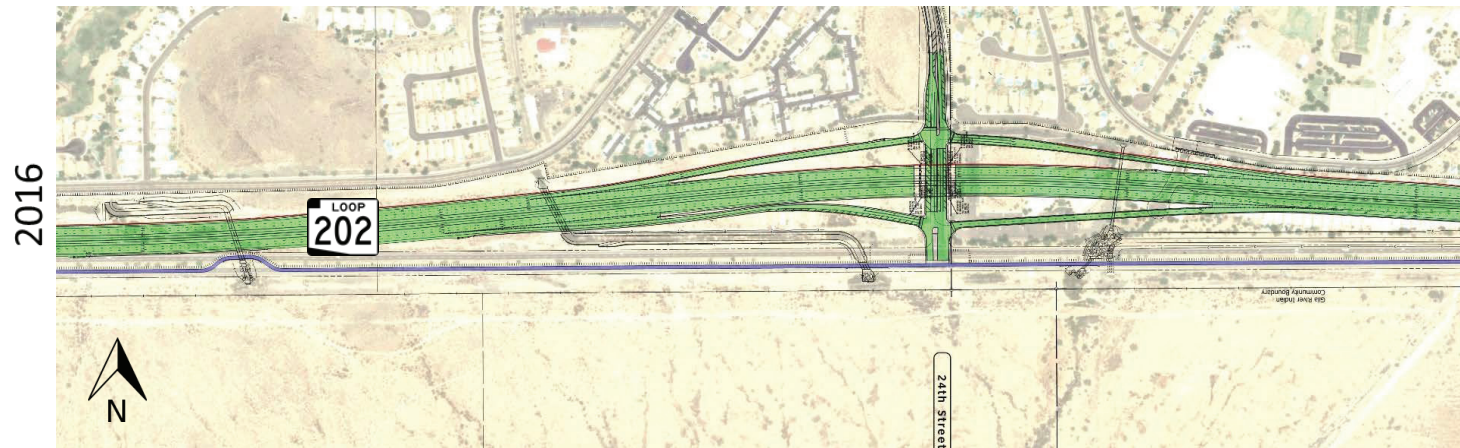


2016





# Pecos Road and 24th Street

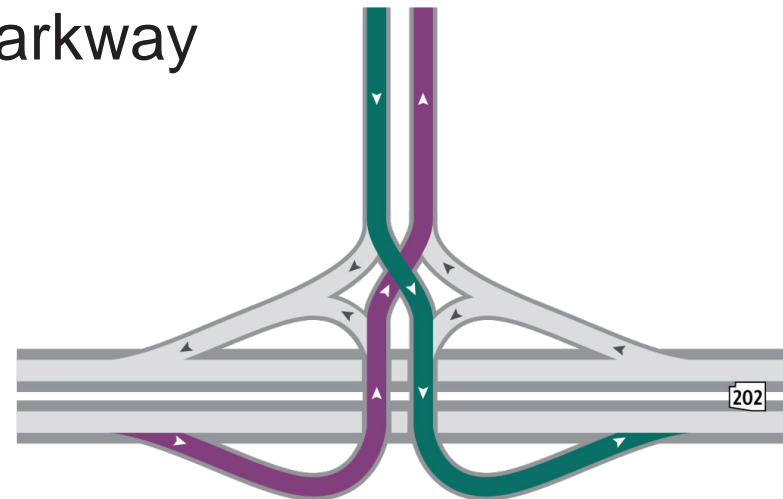


# Pecos Road and Desert Foothills Parkway



# Diverging Diamond Interchange (DDI)

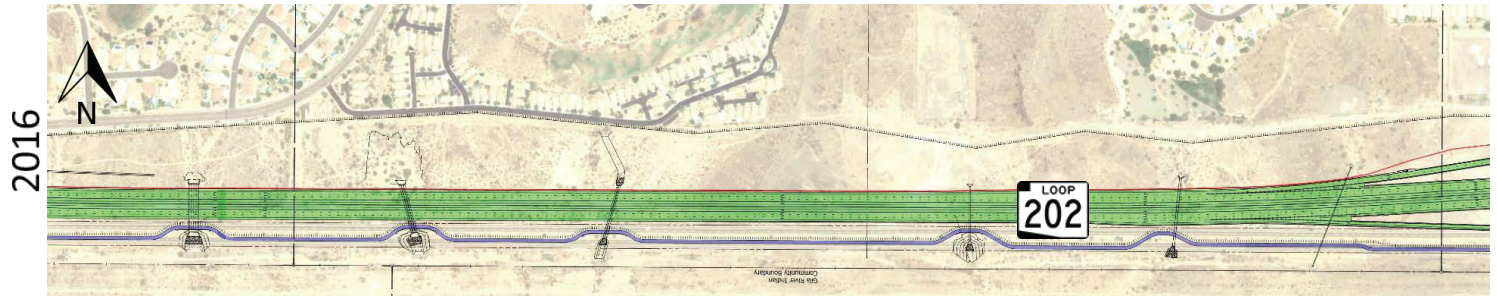
- Two half-DDIs are planned at:
  - Desert Foothills Parkway
  - 17th Avenue
- Full configuration not needed
  - No connections to the south



Graphic representation similar to configuration planned for Desert Foothills Parkway. The freeway mainline will go over the crossroads at 17th Avenue.



# Pecos Road and Central Avenue



# Pecos Road and 17th Avenue

2013



2016



LOOP 202  
*South Mountain*  
Freeway

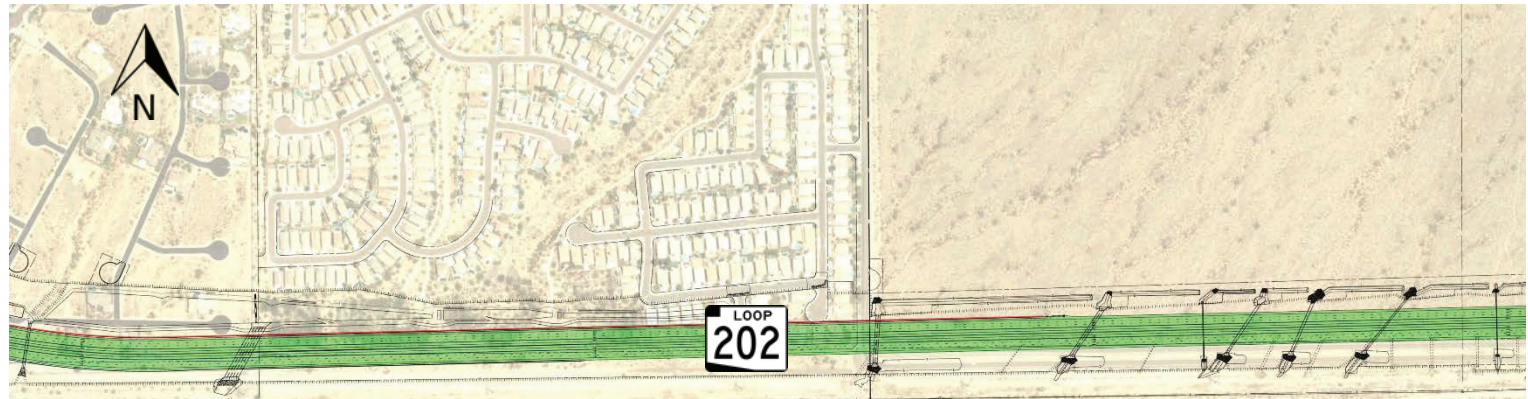


# Pecos Road and Chandler Boulevard

2013



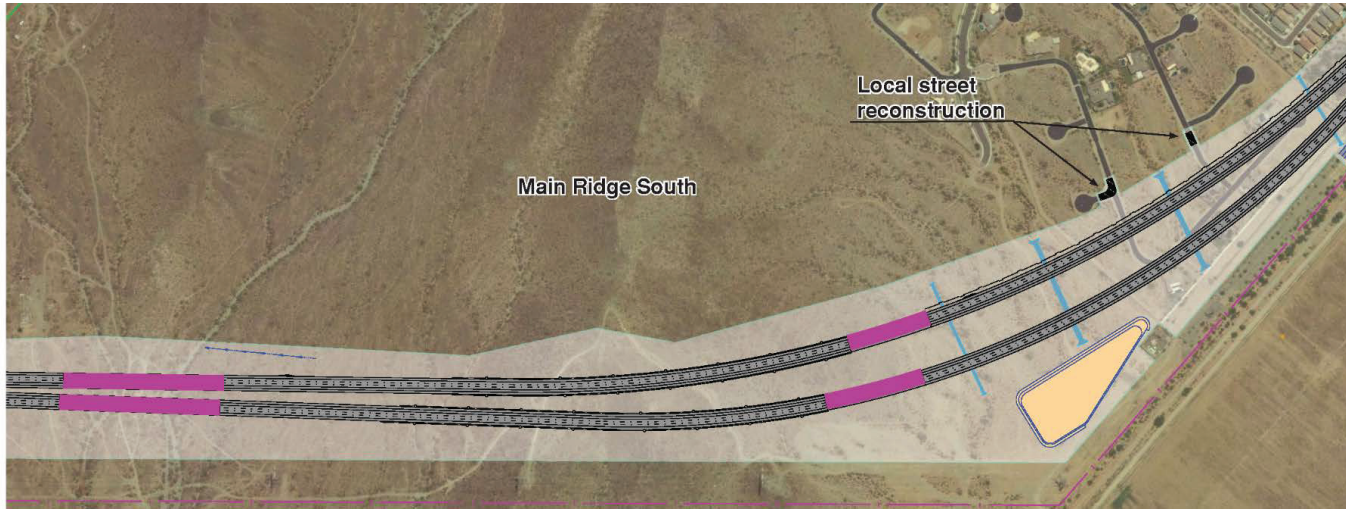
2016





# Main Ridge South

2013



2016



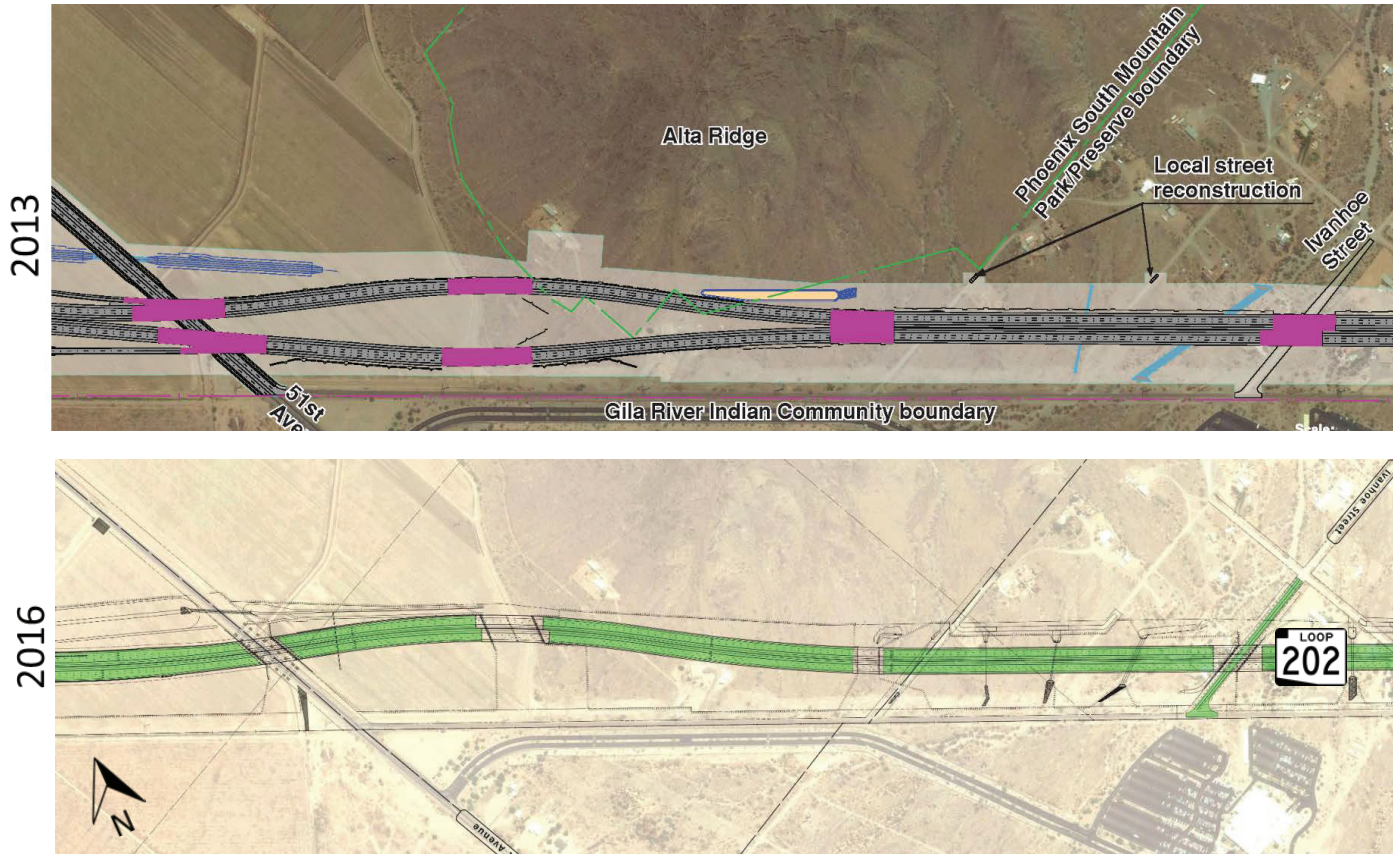
LOOP 202  
*South Mountain*  
Freeway

# Main Ridge North





# Alta Ridge



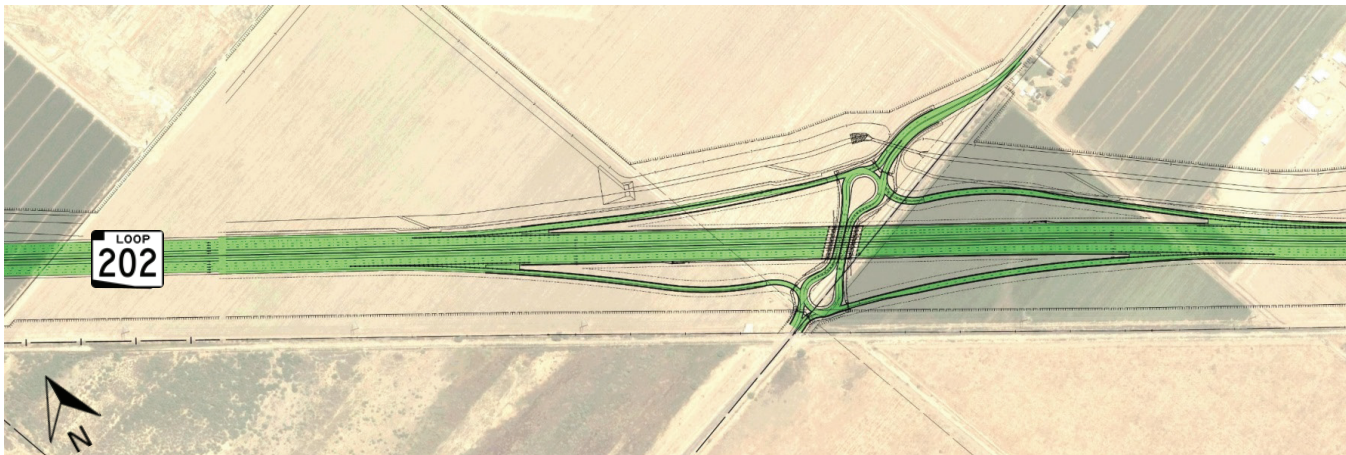
LOOP 202  
*South Mountain*  
Freeway

# Loop 202 at 51st Avenue

2013



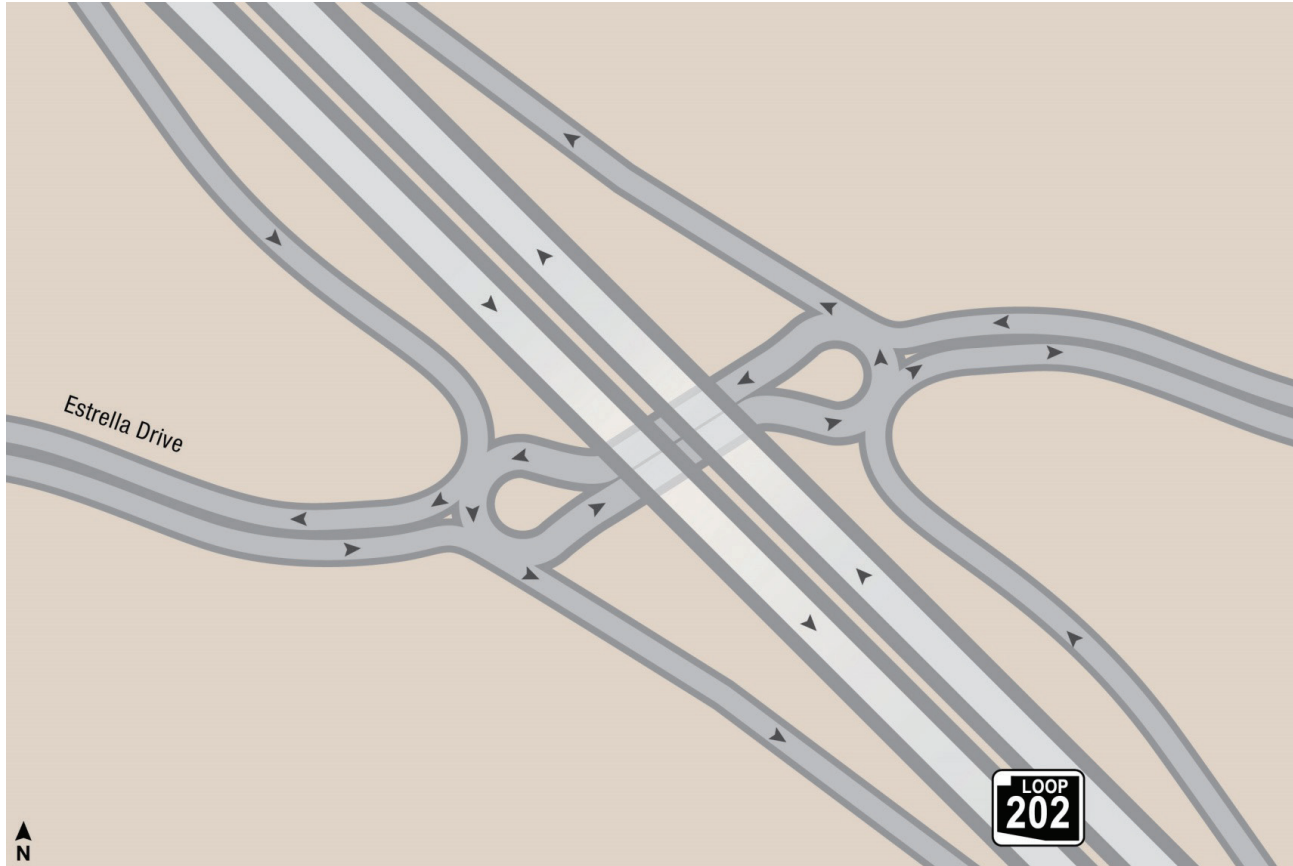
2016



LOOP 202  
*South Mountain*  
Freeway

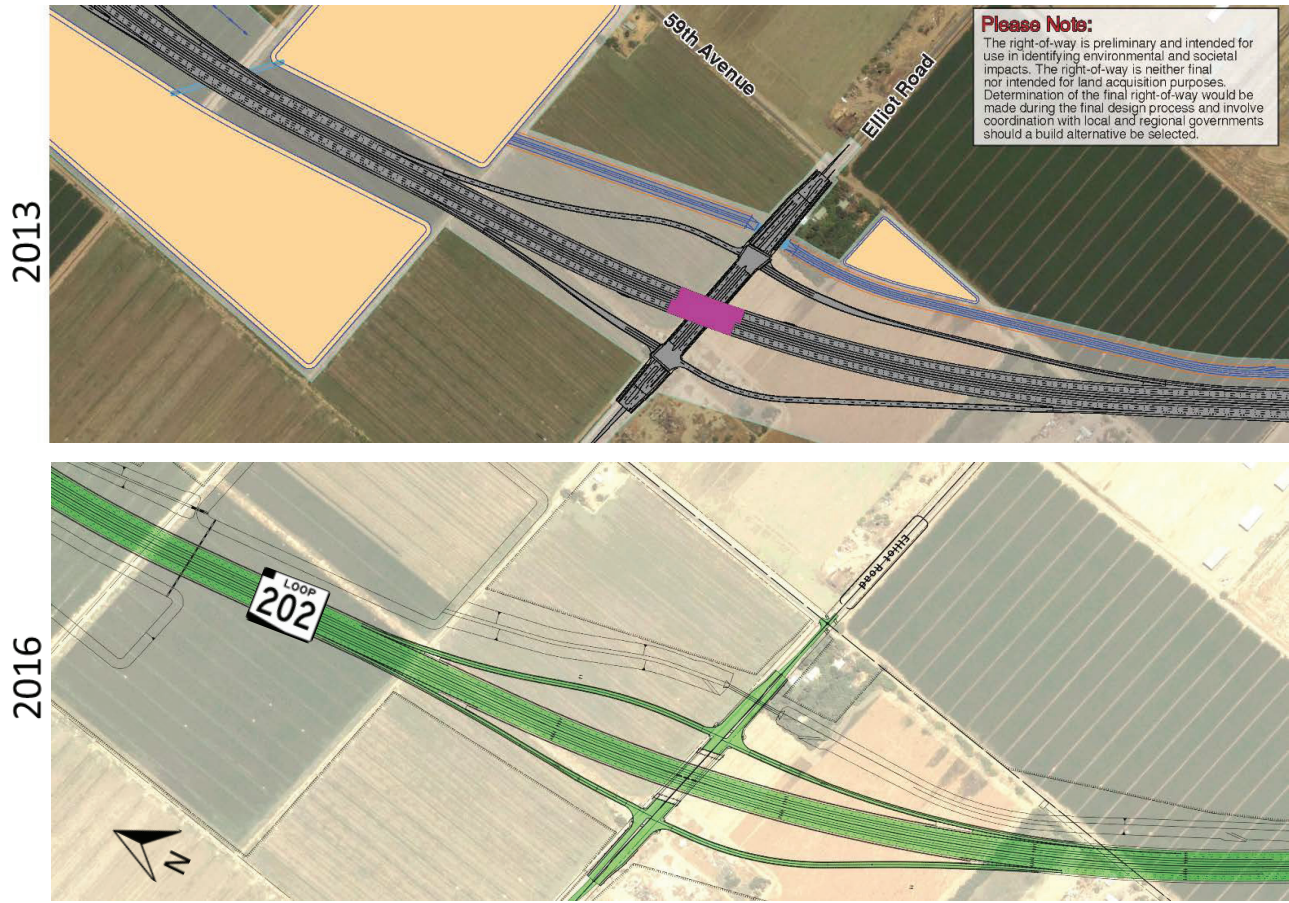


# Double Roundabouts at Estrella Drive

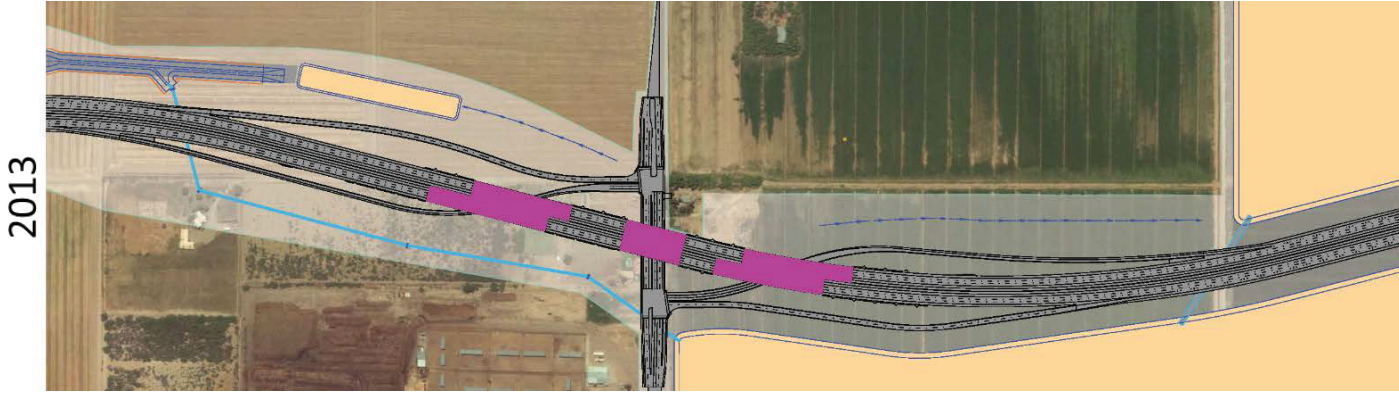


LOOP 202  
*South Mountain*  
Freeway

# Loop 202 at Elliot Road



# Loop 202 at Dobbins Road

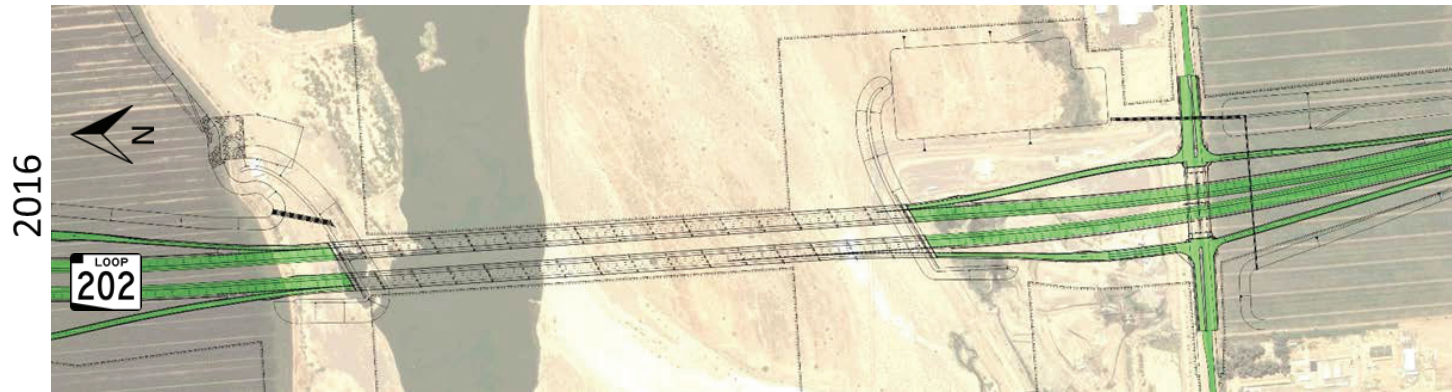
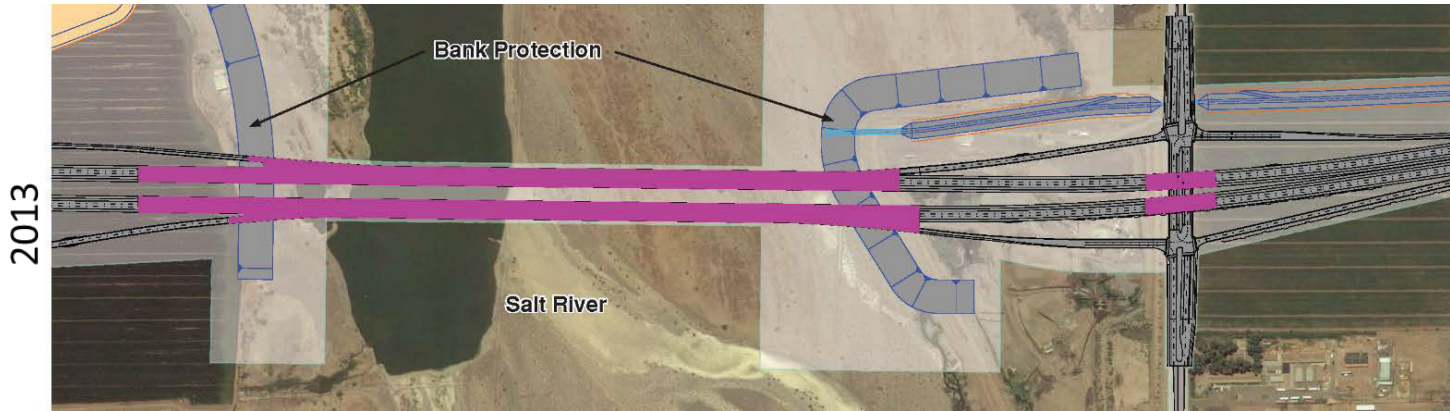




# Loop 202 at Baseline Road



# Loop 202 at Salt River / Southern Avenue





# Loop 202 – Lower Buckeye to Broadway Road

2013

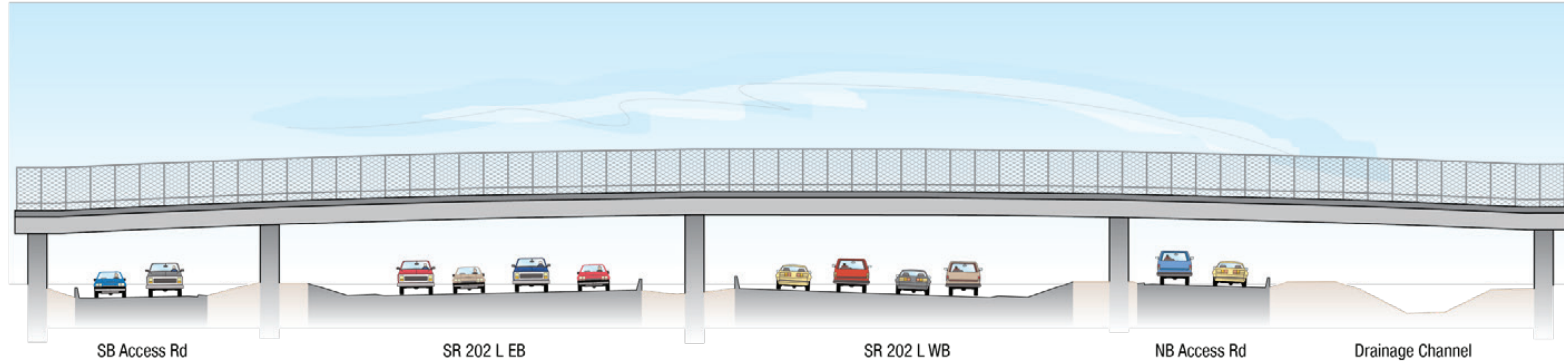


# Pedestrian Bridge Location

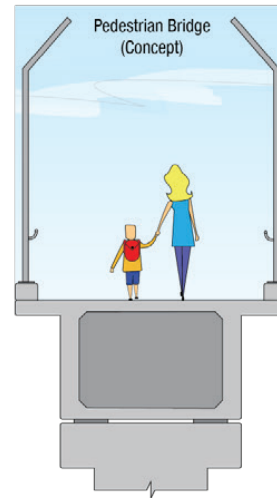
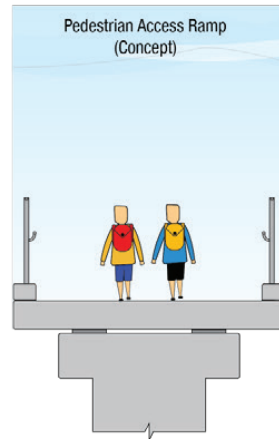


# Bridge Elevation and Cross Section Views

Bridge Elevation (Looking North)



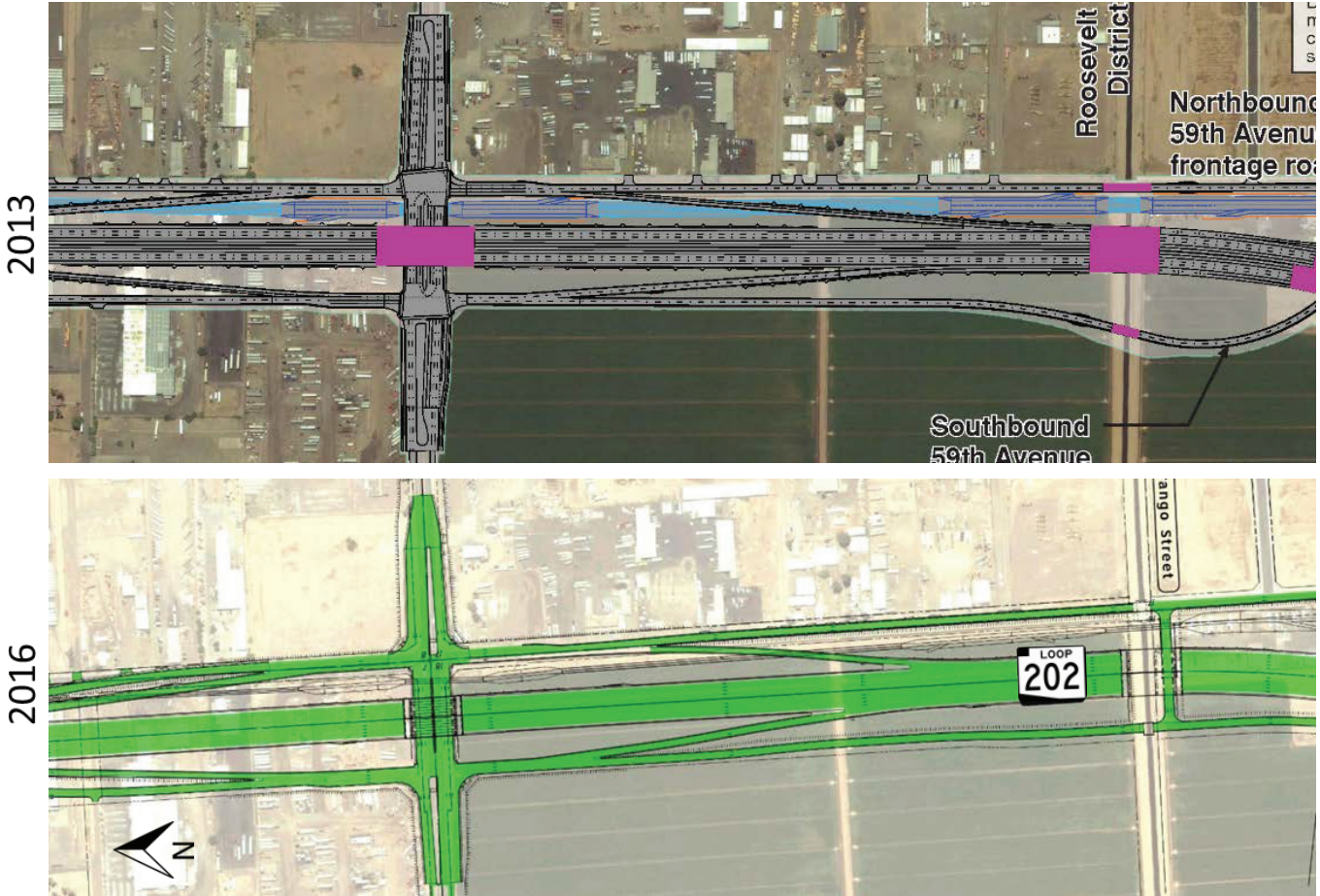
Typical Cross Sections



**Note:** This elevation view is provided for perspective only. Design of the bridge "cage" is still in development.

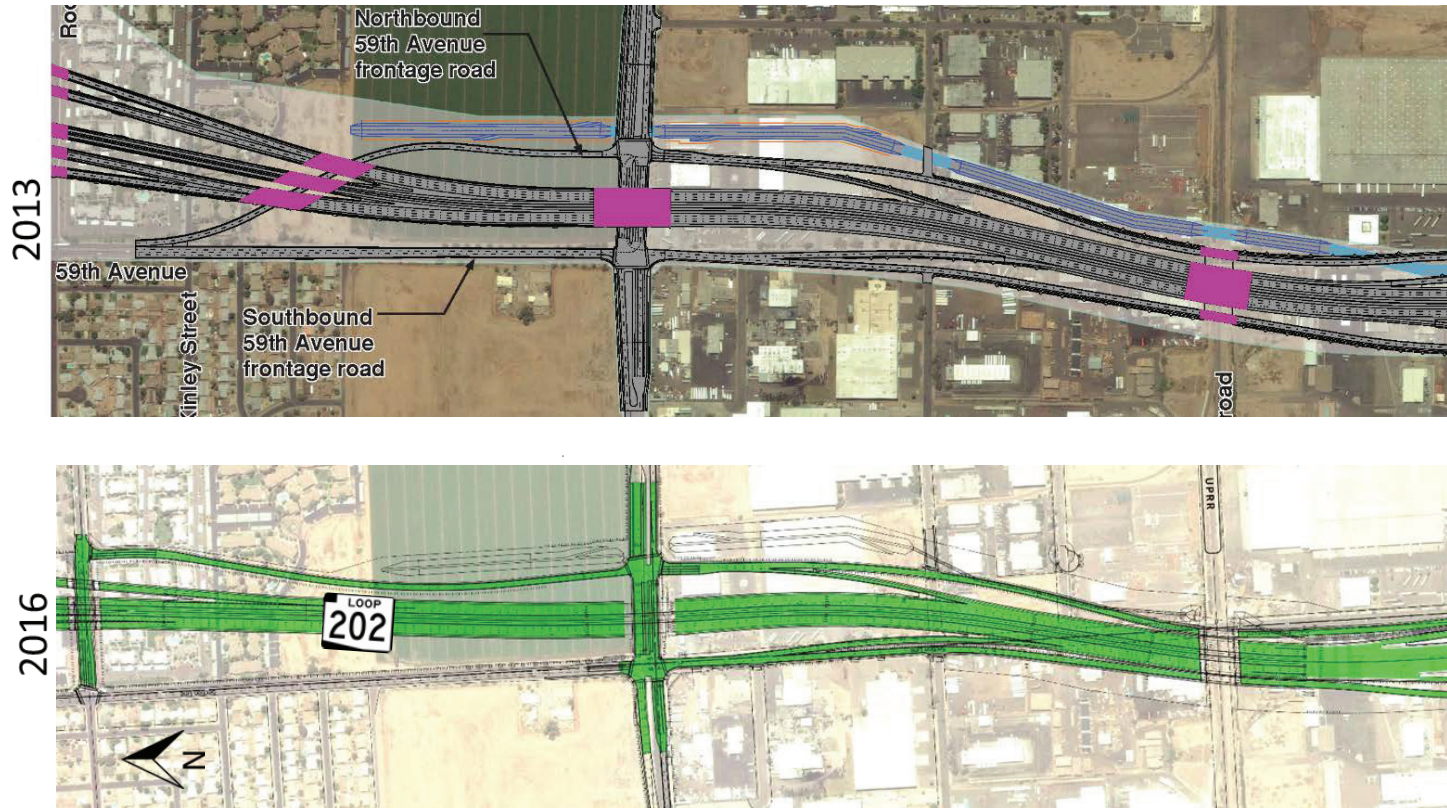


# Loop 202 at Buckeye Road



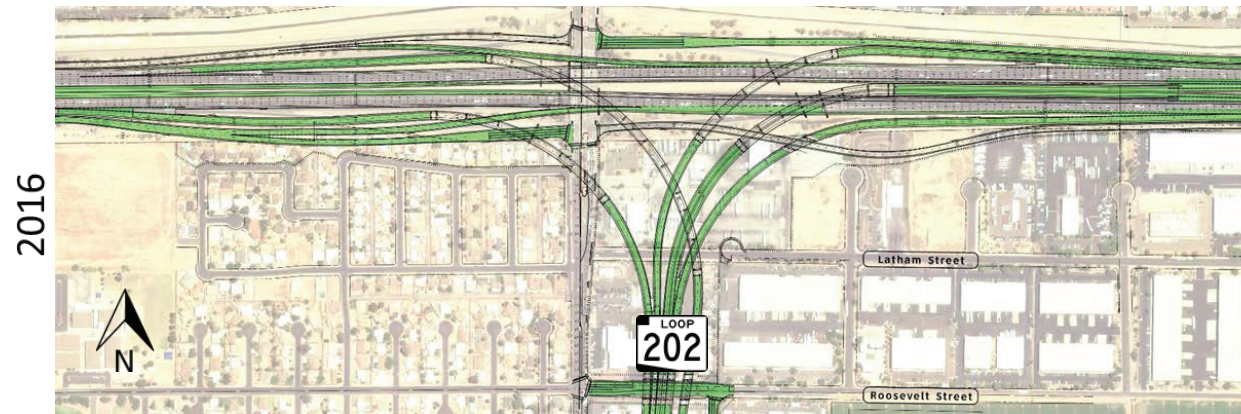
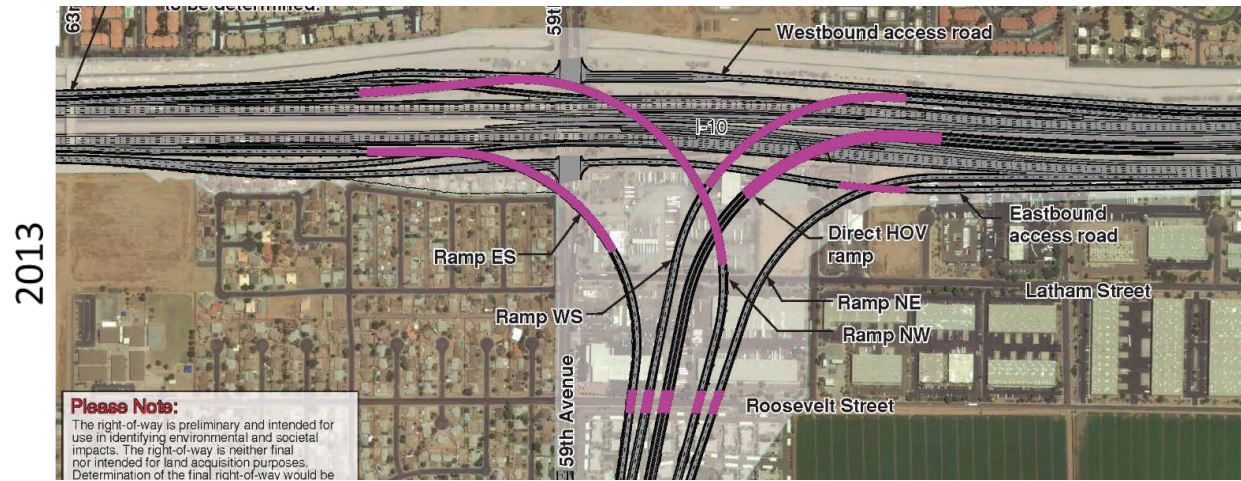
LOOP 202  
*South Mountain*  
Freeway

# Loop 202 at Van Buren Street





# I-10 at 59th Avenue



LOOP 202  
*South Mountain*  
Freeway



# Loop 202 (South Mountain Freeway)

## Overview of Landscape and Aesthetics Design Concepts

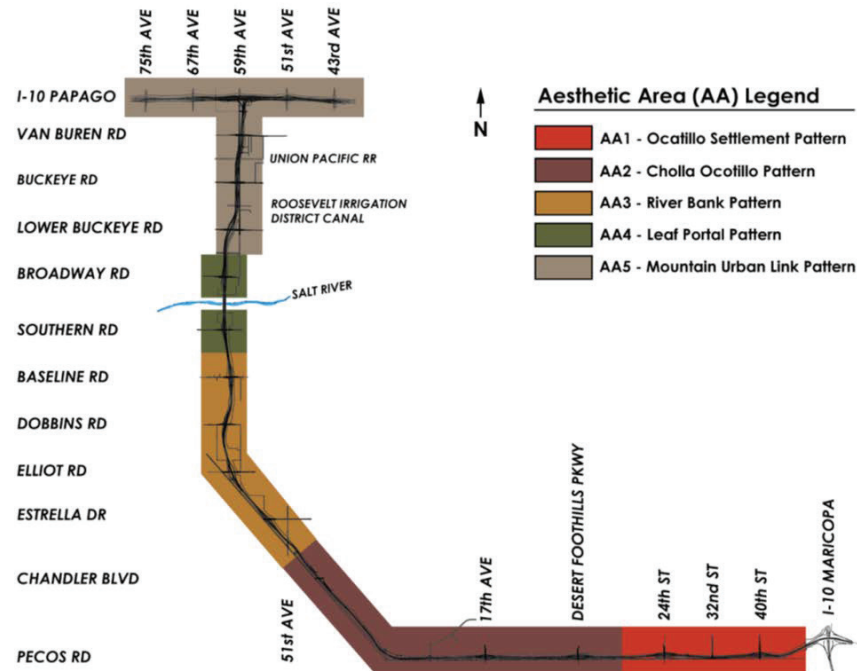


# Aesthetics and Landscape Design Concepts

- Freeway aesthetics and landscape designs
  - Important part of providing quality freeways for today and for future generations
  
- South Mountain Freeway Aesthetics and Landscape Master Plan
  - Incorporates design concepts from ADOT's Landscape Architecture and Aesthetics Design Concept Report
    - Design concepts developed in collaboration with Frank Lloyd Wright Foundation and Cosanti Foundation

# Five Unique Landscape and Aesthetic Areas

- Define the design of all Landscape and Aesthetic Areas for the entire freeway project
  - Landscape plantings
  - Ground treatments
  - Landform (slope) graphics
  - Bridges and noise walls



# Aesthetic Area 1 – Ocatillo Settlement Pattern





# Aesthetic Area 2 – Cholla Ocotillo Pattern

November 16, 2016



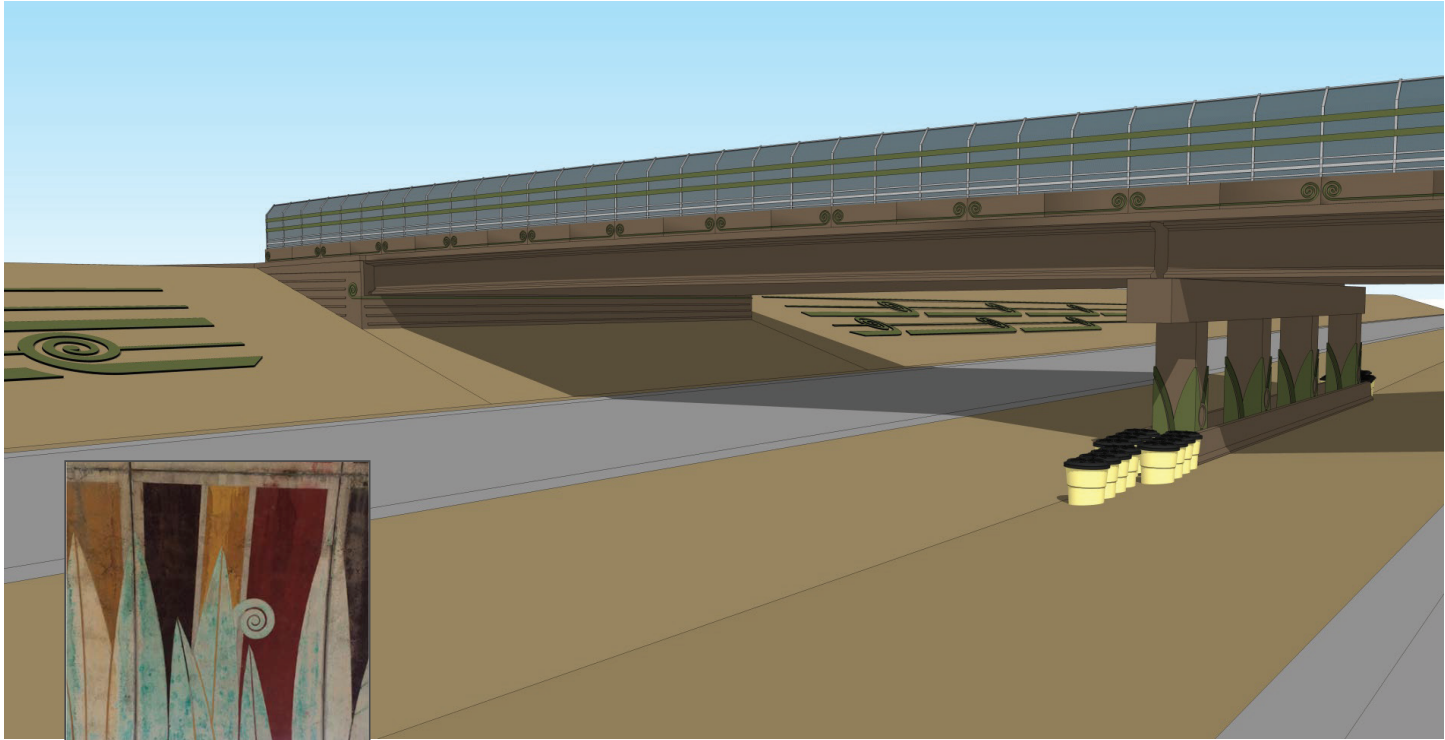
LOOP 202  
*South Mountain*  
Freeway



# Aesthetic Area 3 – River Bank Pattern



# Aesthetic Area 4 – Leaf Portal Pattern



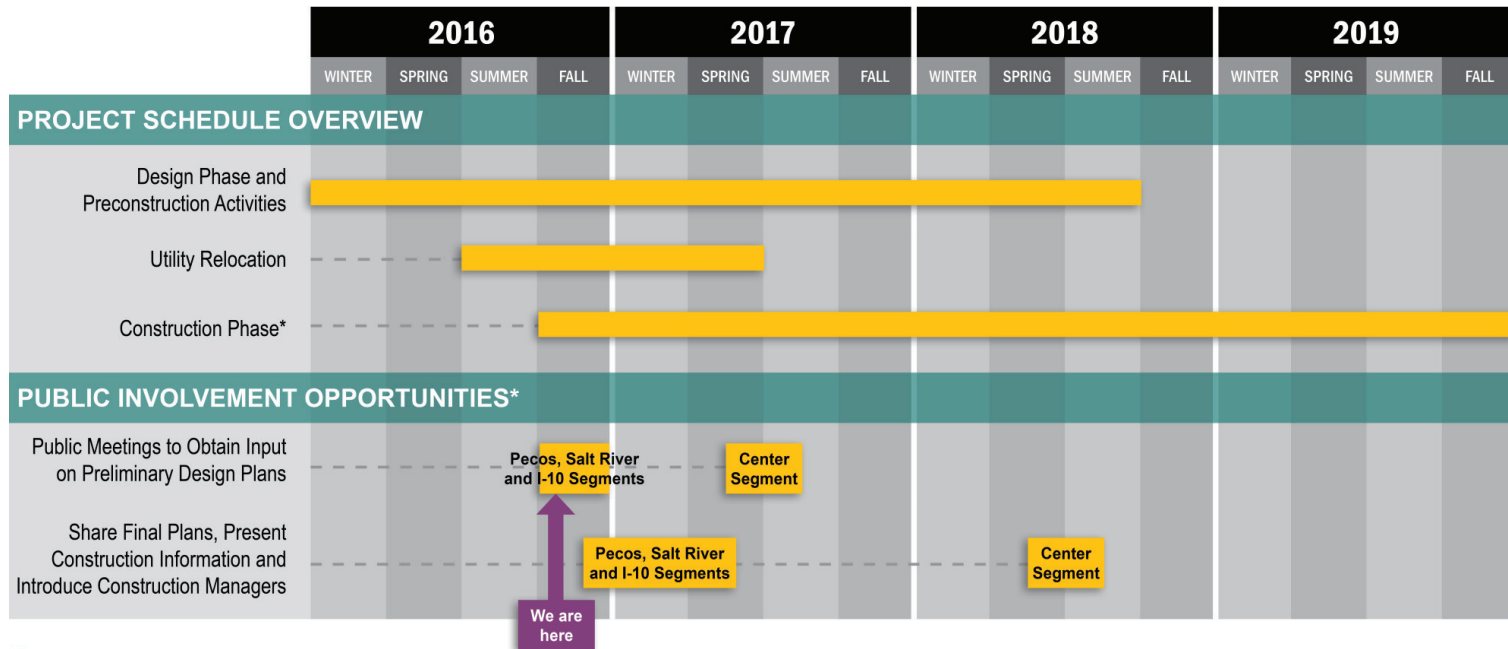
# Aesthetic Area 5 – Mountain Urban Link Pattern



View from I-10 Mainline Heading West



# Preliminary Schedule and Public Involvement Opportunities






\*Notes:

1. Preliminary Schedule – Subject to Change.
2. Due to the nature of the design-build project delivery method being used for the South Mountain Freeway Project and the fact that it is a 22-mile project, construction activities will occur in multiple locations within each construction segment during the construction phase.



# Your Input is Important to Us!

- Speak to project representatives in person
- Write your comments on the forms provided and hand them to a project team member
- Send us your comments via email 
  - Send to [southmountainfreewayinfo@c202p.com](mailto:southmountainfreewayinfo@c202p.com)
  - or via the project website: [southmountainfreeway.com](http://southmountainfreeway.com)
- Mail your comments to us at the following address:
  - ADOT Communications  
1655 W. Jackson St., MD 126F   
Phoenix, AZ 85007
- Call us at the project hotline:
  - 1.855.SMF.L202 (1.855.SMF.L202)   
Para español: 623-239-4558



## What do we do with public input?

- Document, categorize and analyze all public comments and identify recurring themes/trends
- Compile all data into a public meeting report, to include original comments and Q&A notes
  - Comments received by Oct. 20 will become part of the official meeting report
- Share with decision makers at ADOT, FHWA, Maricopa Association of Governments (MAG), City of Phoenix, elected officials, etc.
  - Report will be available to view online in early November at: [southmountainfreeway.com](http://southmountainfreeway.com)



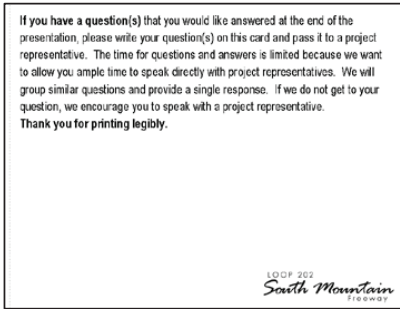
## Next Steps

- Decision makers review reports and consider input
  - Potentially feasible requests considered and analyzed in terms of environmental, schedule and budget impacts, as well as constructability
  - Incorporate feasible changes into final design plans
- Share final design and construction plans

# Questions and Comments




**We appreciate your participation in today's meeting!**

**Please write your questions and comments on the white question cards and pass them to the end of the aisle so we can collect and sort them by topic.**



**If we don't get to your question during the Q&A, please speak with a team member afterward or send us your question through the contact information provided.**

# Your Input is Important to Us!

- Speak to project representatives in person
- Write your comments on the forms provided and hand them to a project team member
- Send us your comments via email 
  - Send to [southmountainfreewayinfo@c202p.com](mailto:southmountainfreewayinfo@c202p.com)
  - or via the project website: [southmountainfreeway.com](http://southmountainfreeway.com)
- Mail your comments to us at the following address:
  - ADOT Communications  
1655 W. Jackson St., MD 126F   
Phoenix, AZ 85007
- Call us at the project hotline:
  - 1.855.SMF.L202 (1.855.SMF.L202)   
Para español: 623-239-4558

