

ABOUT THIS PROJECT...

CORRIDOR MASTER PLAN PURPOSE & NEED

The purpose of the Milton Road Corridor Master Plan (CMP) is to **identify a 20-year vision** for a 1.8-mile section of Milton Road that **addresses current safety and traffic congestion issues** by evaluating a mixture of previously recommended and newly introduced System Alternatives. These System Alternatives include a mix of alternatives that utilize and maintain the existing Milton Road right-of-way, alternatives that would require an expanded right-of-way, and alternative routes separate and in addition to the Milton Road corridor itself.

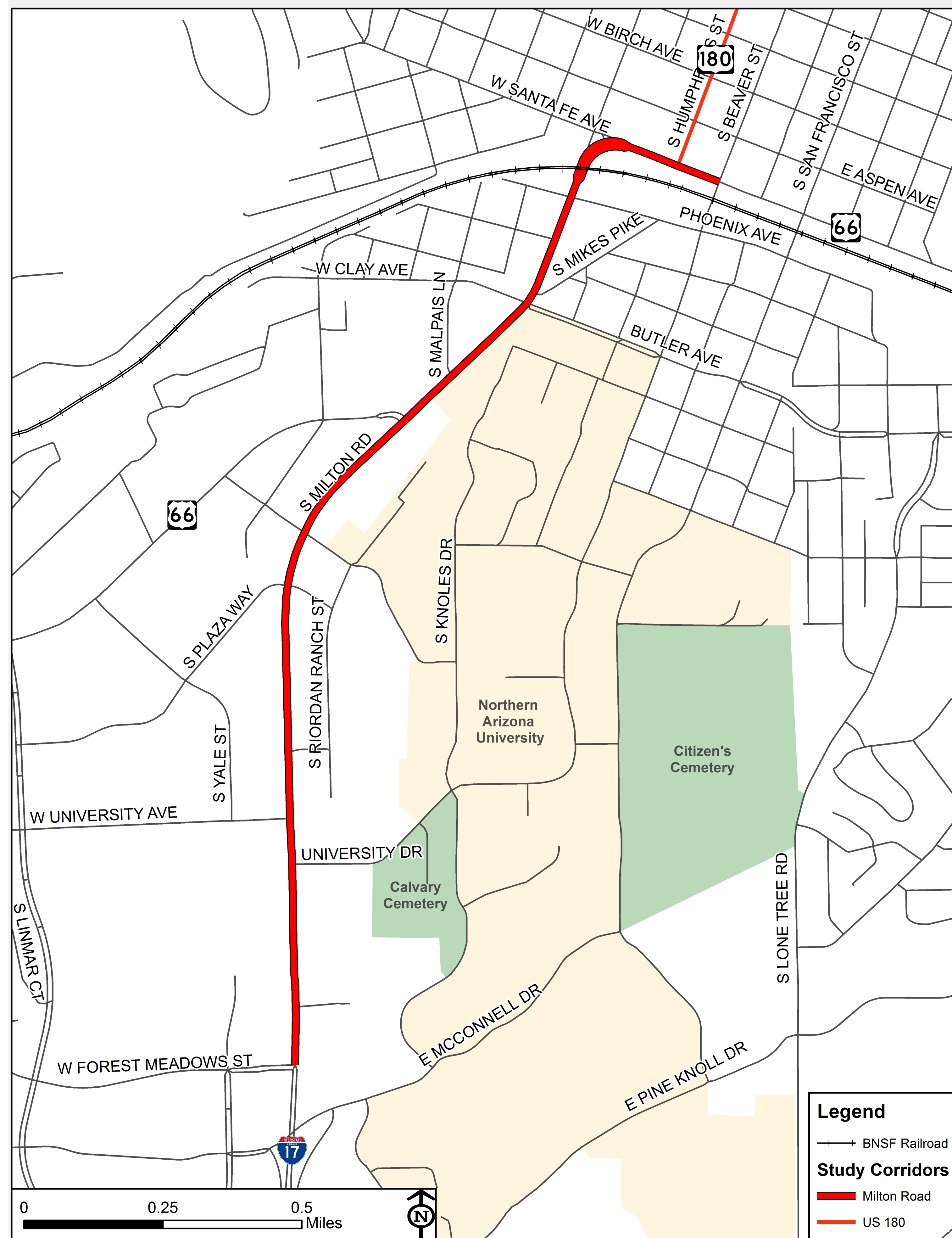
The System Alternatives are also complemented by a series of Base Build Spot Improvements – which constitute targeted, near-term lower investment mitigation measures that support mid- and long-term System Alternatives.

PROJECT PARTNERS

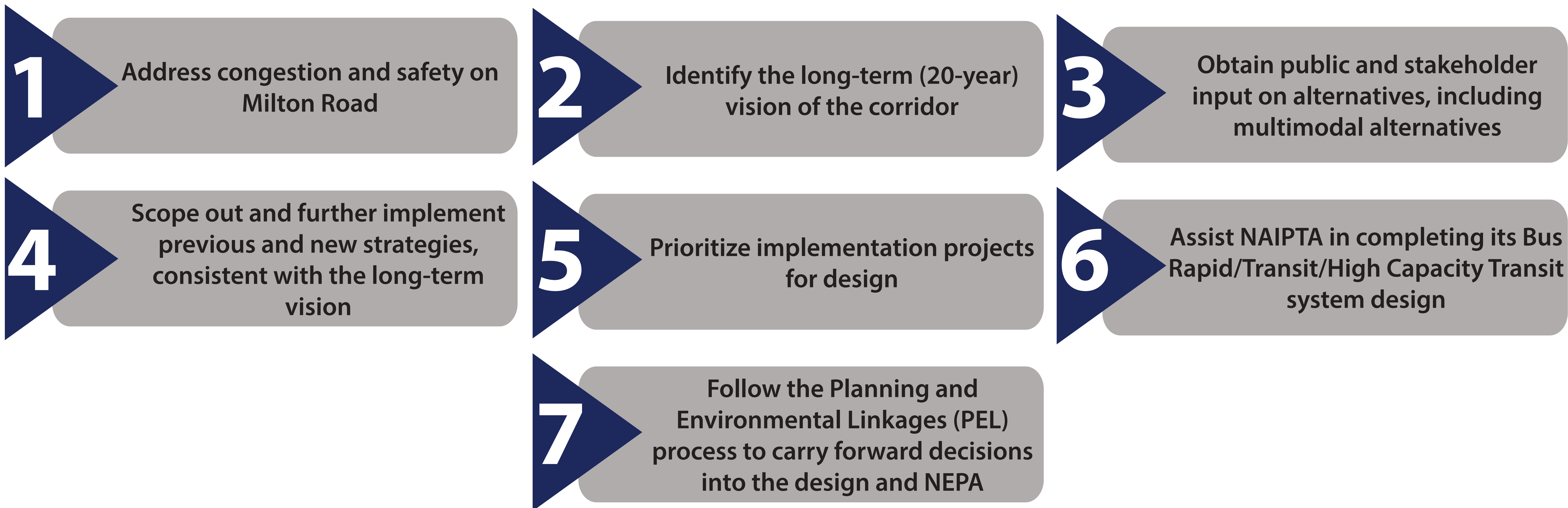
As part of the CMP Process, a team of Project Partners (Partners) has been assembled to include representatives from the following agencies to help guide the success of the Milton Road CMP study process:

- Arizona Department of Transportation (ADOT)
- Flagstaff Metropolitan Planning Organization (FMPO)
- Northern Arizona Intergovernmental Public Transportation Authority (NAIPTA)
- City of Flagstaff
- Coconino County
- US Forest Service (USFS)
- Federal Highway Administration (FHWA)
- Northern Arizona University (NAU)
- Burlington Northern Santa Fe Railroad (BNSF)

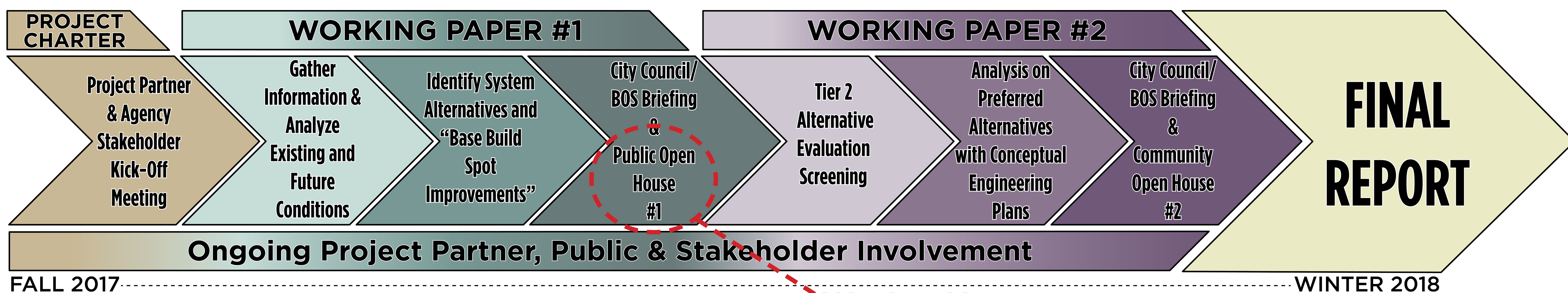
The Project Partners established the following seven goals for the Milton Road CMP which are not prioritized in any particular order:



CORRIDOR MASTER PLAN GOALS

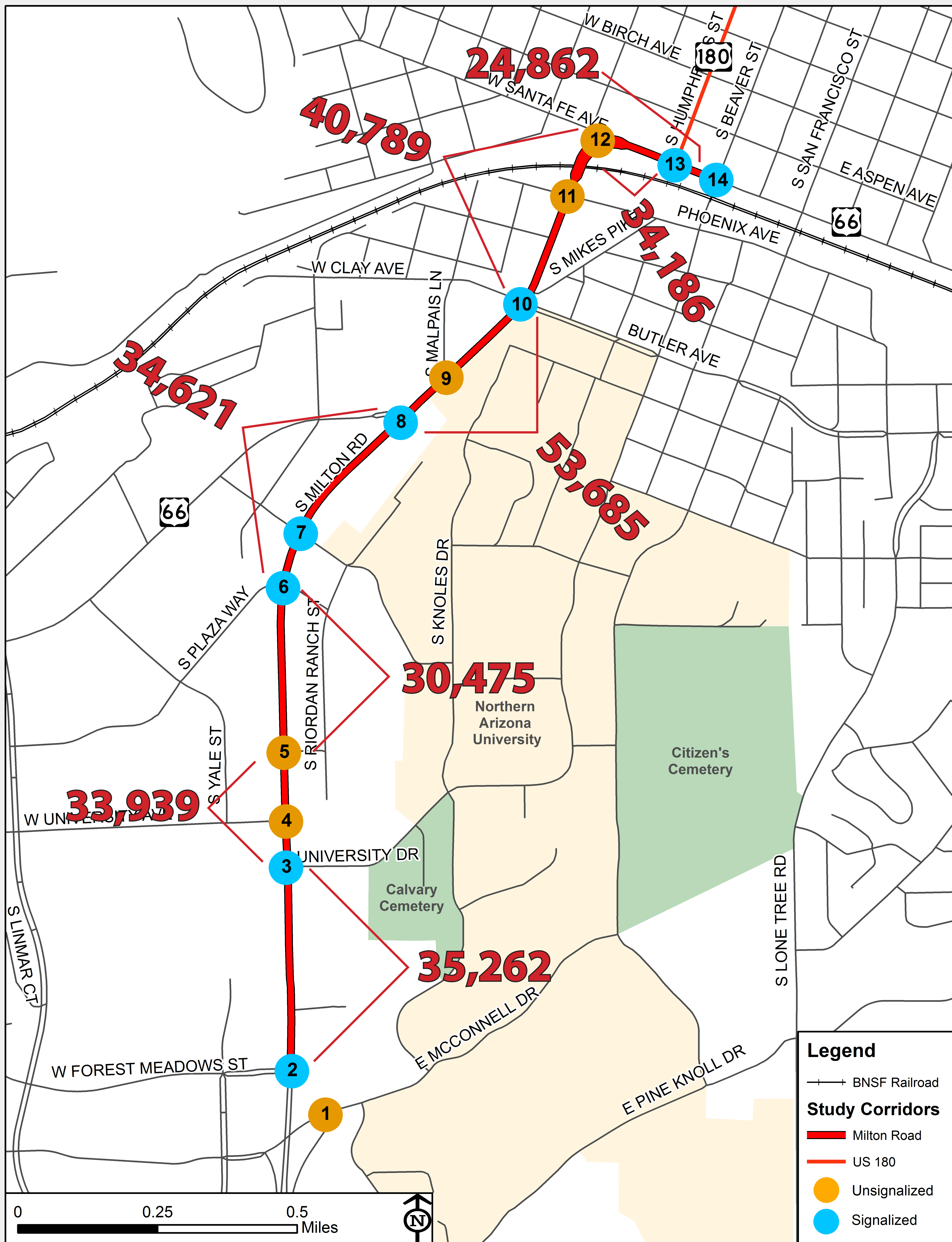


PROJECT SCHEDULE



STUDY CORRIDOR AT A GLANCE...

Number of Average Daily Vehicles TODAY



Level-of-Service TODAY

Intersection	PM Peak	
	LOS	Delay (Sec/Veh)
2 Milton Road & Forest Meadows Street	C	33.3
3 Milton Road & University Drive	C	21.2
6 Milton Road & Plaza Way	B	20.0
7 Milton Road & Riordan Road	B	15.0
8 Milton Road & Historical Route 66	C	27.2
10 Milton Road & Clay/Butler Avenue	D	40.1
13 Milton Rd & Humphreys St	C	29.6
14 Milton Rd & Beaver St	B	12.9

Level-of-Service (LOS) Criteria

LOS	Average Delay	
	Signalized Intersections	Unsignalized Intersections
A	≤ 10	≤ 10
B	> 10-20	> 10-15
C	> 20-35	> 15-25
D	> 35-55	> 25-35
E	> 55-80	> 35-50
F	> 80	> 50

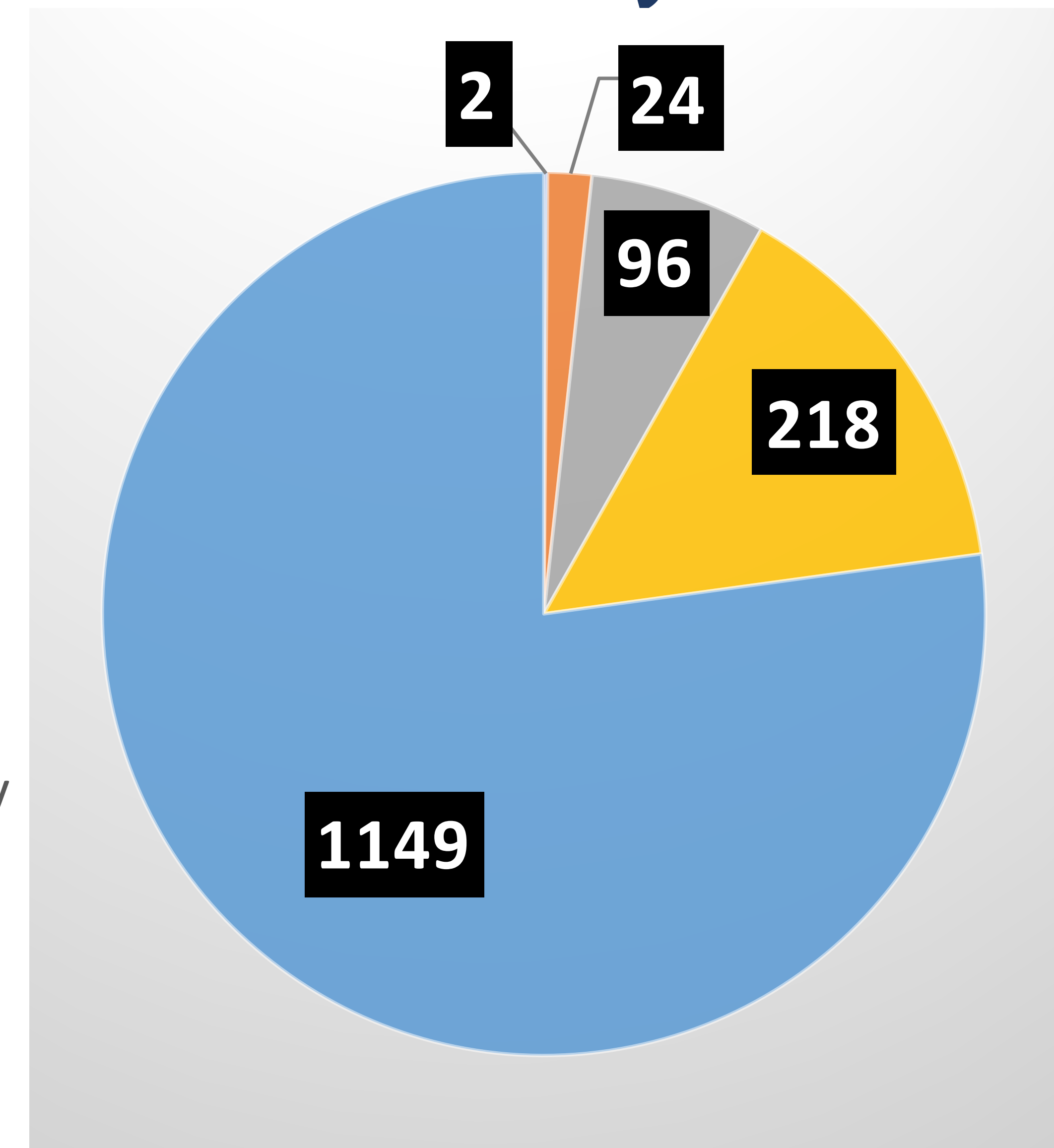
NOTE: Vehicle Counts Observed on Tuesday, September 12, 2017

STUDY CORRIDOR AT A GLANCE... EXISTING CORRIDOR SAFETY CONSIDERATIONS

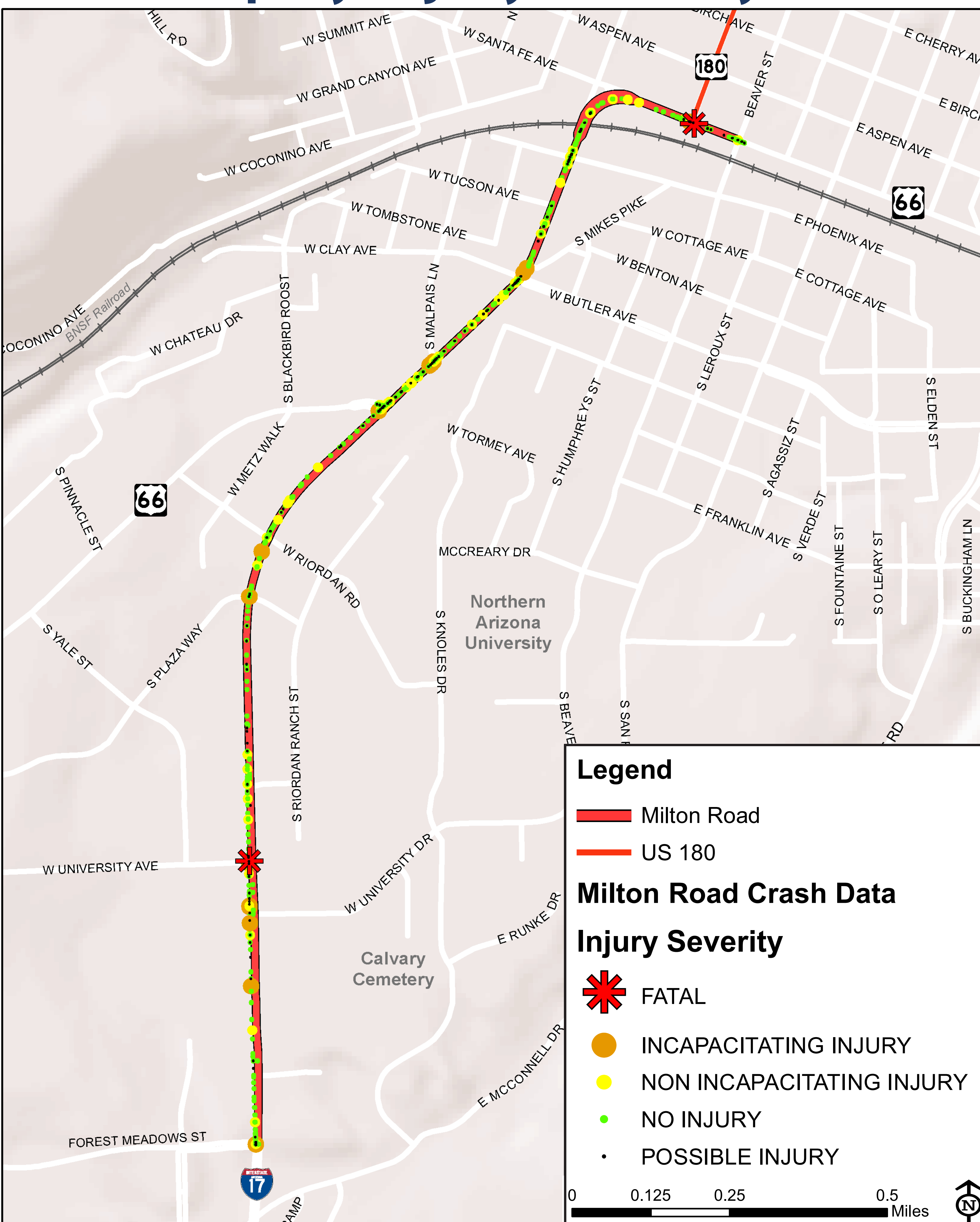
Crash Severity Comparison

Crash Severity	Number	US 180 %	Statewide Average %*
Fatal	2	0.1%	1%
Injury	338	23%	31%
Property Damage Only	1,149	77%	68%

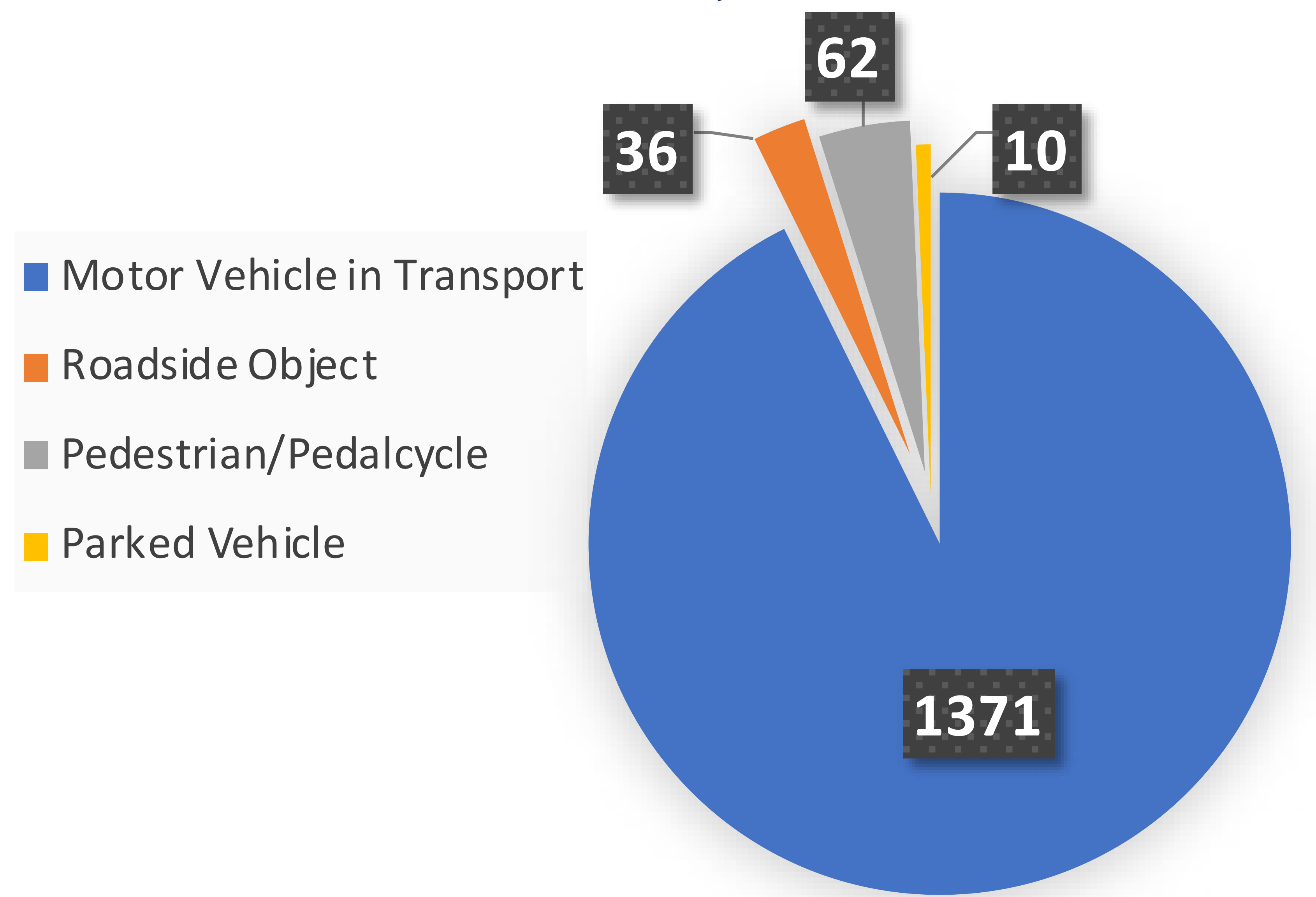
Percentage of Crashes Based on Severity



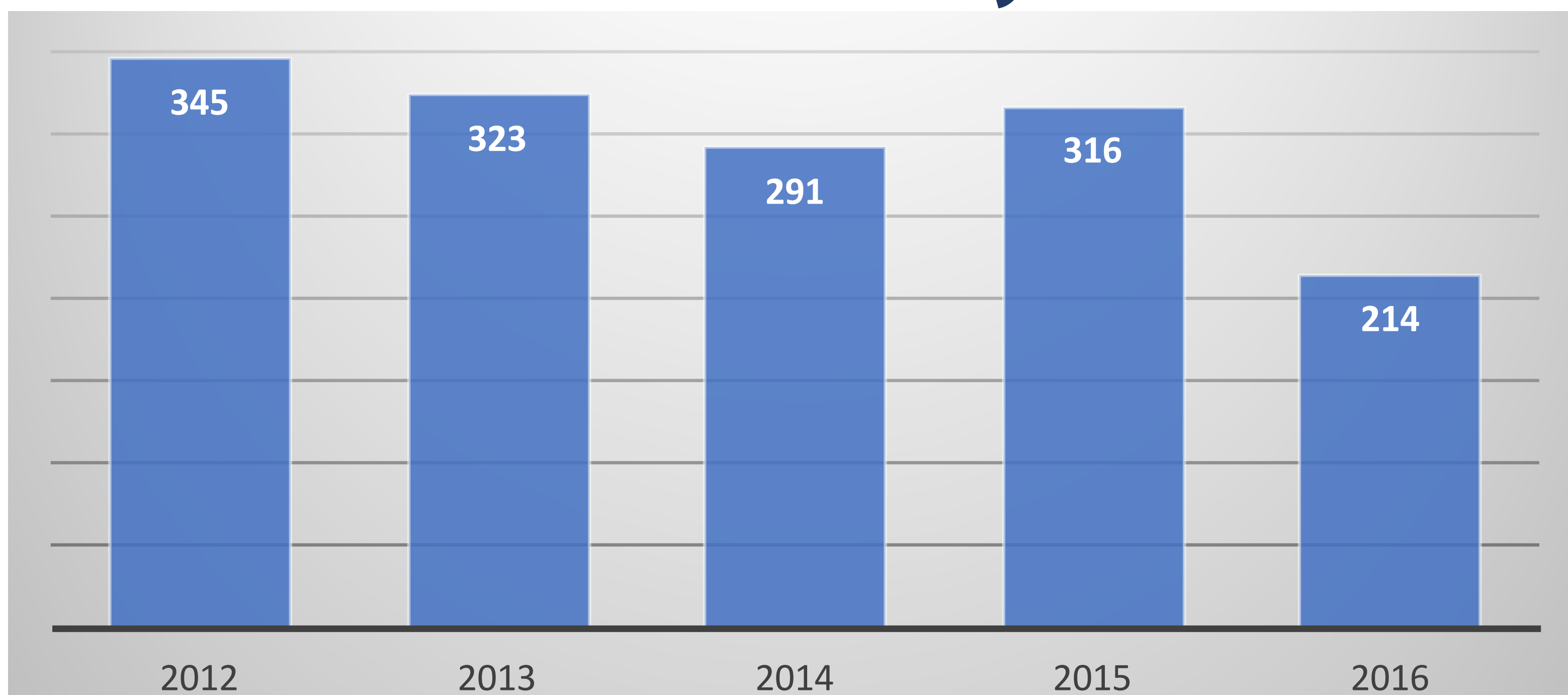
Crash Map by Injury Severity



Crashes by Cause



Total Crashes by Year



Total Crashes by Month

