



L RTP Vision Report

The Long-Range Transportation Plan (LRTP) is a policy document that provides a roadmap for Arizona's transportation system for the next 25 years. The **Vision Report** provides an overview of the various transportation systems, typical users and how these will change over the next several decades. The report lays the foundation for the LRTP vision, goals, and objectives.

FUTURE CHALLENGES



WATER



CLIMATE



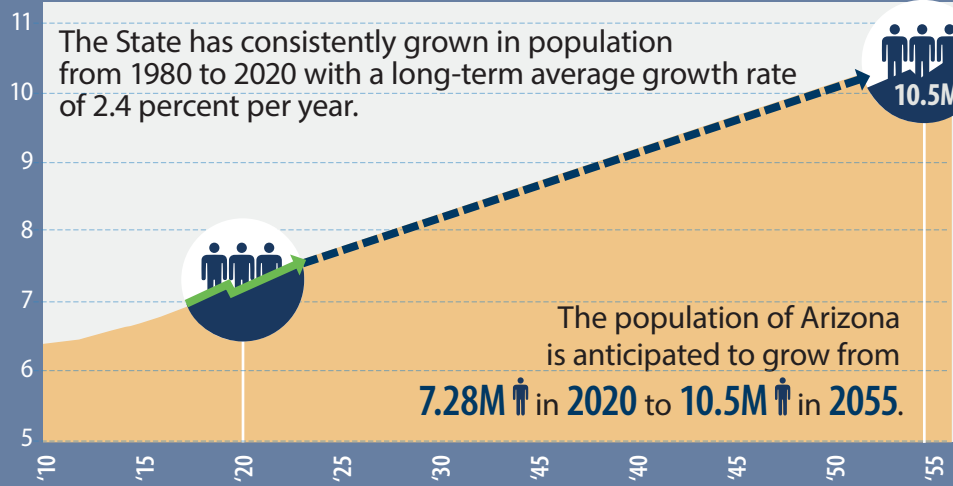
TECHNOLOGY



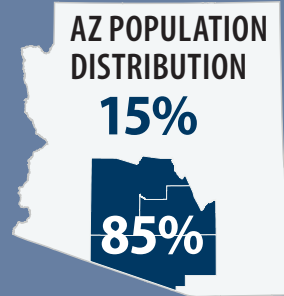
SOCIAL EQUITY

STATE POPULATION GROWTH

Arizona's statewide projected population growth



By **2055**, Pinal County is expected to significantly increase in population resulting in the **MARICOPA/PIMA/PINAL COUNTIES** holding nearly **85%** of the state population.



TRANSPORTATION SYSTEMS

Arizona's transportation system encompasses:



AVIATION

PUBLIC-USE AIRPORTS IN AZ

67

OF TOTAL COMMERCIAL AIR TRAVEL ...

88%

PHOENIX SKY HARBOR

7%

TUCSON INTERNATIONAL

5%

OTHER AIRPORTS

BRIDGES

APPROXIMATELY

8,500

BRIDGES STATEWIDE

57%

ADOT-OWNED

<1%

ARE IN POOR CONDITION

RAIL



PROVIDES APPROXIMATELY

30%

OF TOTAL FREIGHT TRANSPORTED

FREIGHT



TRUCKS

PROVIDE APPROXIMATELY

70%

OF TOTAL FREIGHT TRANSPORTED

TRANSIT



2 URBAN SYSTEMS

[PHOENIX & TUCSON]

5 SMALL URBAN SYSTEMS

29 RURAL SYSTEMS

PORTS OF ENTRY (POE)



9

POE ALONG MEXICO BORDER

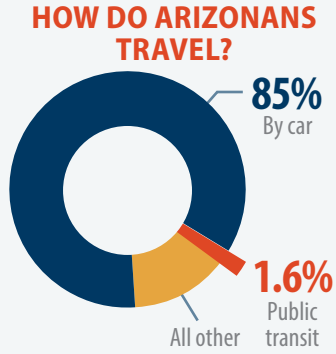
PROVIDING **\$30B**

OF GOODS


REGISTERED VEHICLES IN ARIZONA



7.7M+



AVERAGE NUMBER OF PER HOUSEHOLD



2.1



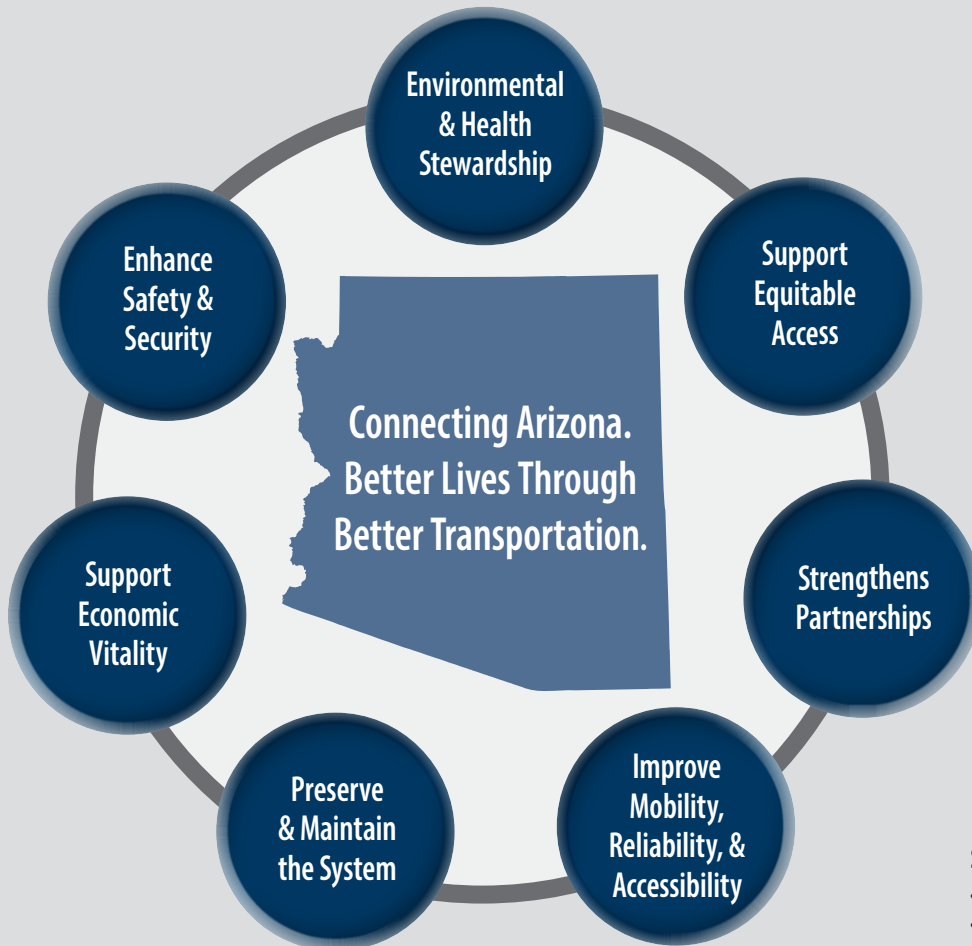
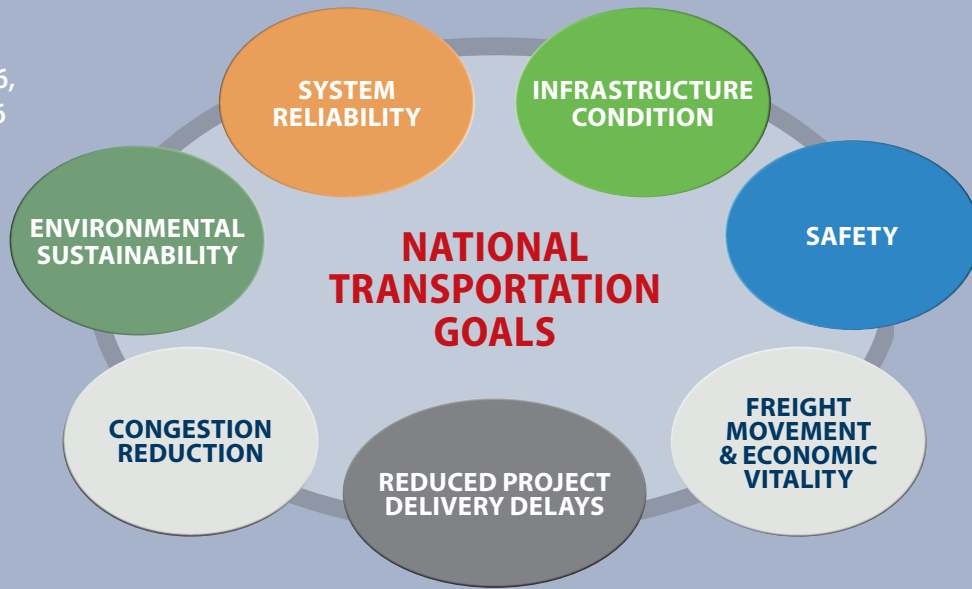
TOTAL FATALITIES IN VEHICLE CRASHES HAVE EXCEEDED

1,000/YEAR

IN 4 OF THE LAST 5 YEARS

FEDERAL:
23 CFR 450.206,
23 CFR 450.216

STATE:
ARS 28-306,
ARS 28-307,
ARS 28-506



SHARE YOUR INPUT

- Scan the QR Code
- Visit adot2050plan.com